



# UAE

FLOOR PLANS

BY EMAAR

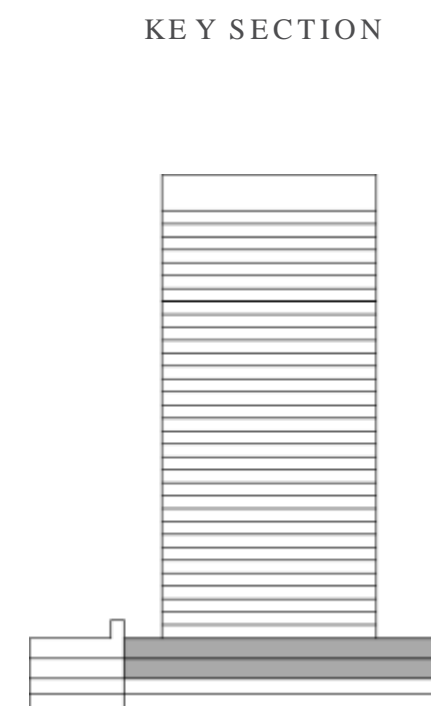
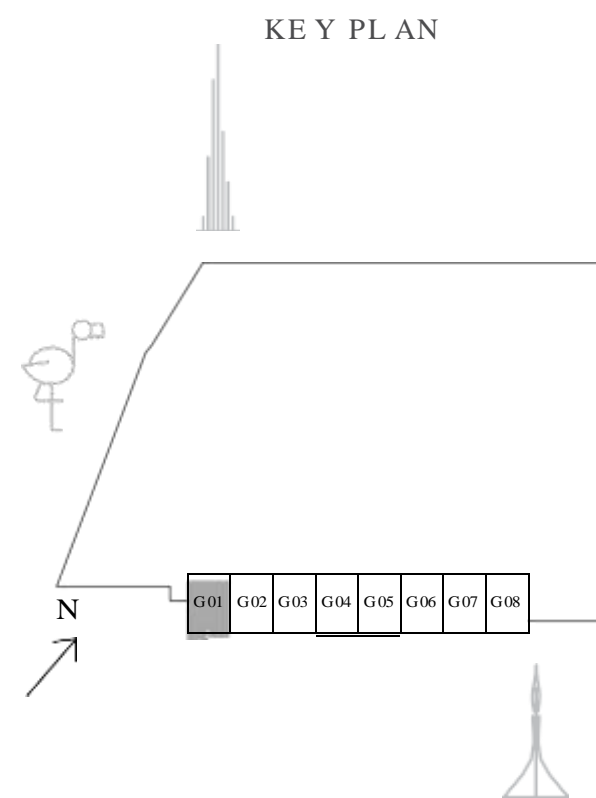
# CREEK PALACE

DUBAI CREEK HARBOUR

## 3 BEDROOM

UNIT G01 | GROUND LEVEL

SUITE AREA	1765.28 SQ.FT.	164.00 SQ.M.
BALCONY AREA	160.92 SQ.FT.	14.95 SQ.M.
TOTAL AREA	1926.20 SQ.FT.	178.95 SQ.M.



UPPER LEVEL



LOWER LEVEL

FLOOR PLAN 1. All dimensions are in imperial and metric, and measured from finish to finish excluding construction tolerances. 2. All materials, dimensions, and drawings are approximate only. 3. Information is subject to change without notice, at developer's absolute discretion. 4. Actual area may vary from the stated area. 5. Drawings not to scale. 6. All images used are for illustrative purposes only and do not represent the actual size, features, specifications, fittings, and furnishings. 7. The developer reserves the right to make revisions / alterations, at it's absolute discretion, without any liability whatsoever.

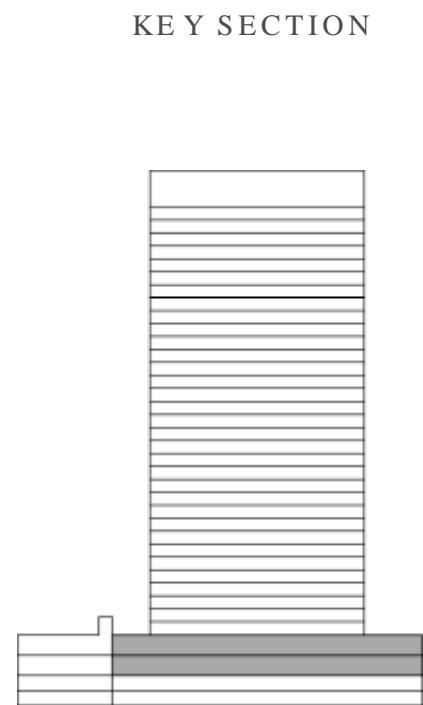
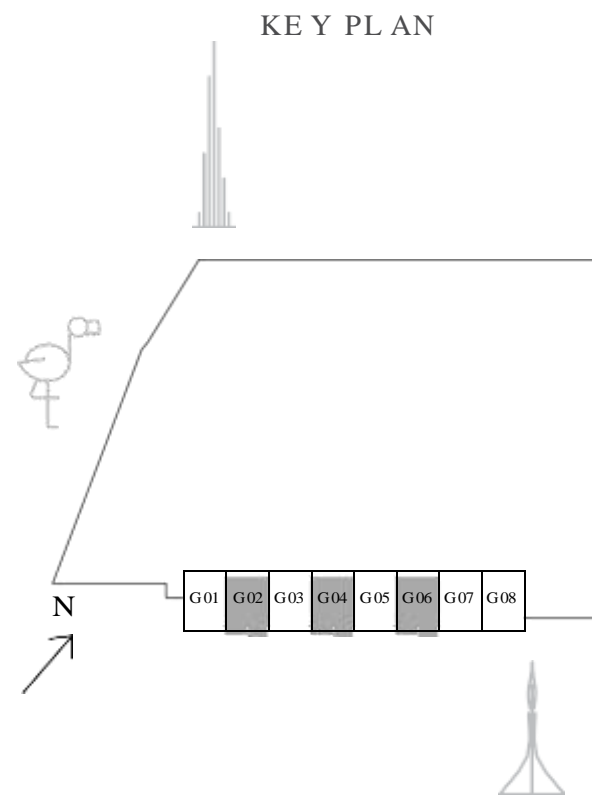
# CREEK PALACE

DUBAI CREEK HARBOUR

## 3 BEDROOM

UNIT G02, G04, G06 | GROUND LEVEL

SUITE AREA	1752.58 SQ.FT.	162.82 SQ.M.
BALCONY AREA	149.29 SQ.FT.	13.87 SQ.M.
TOTAL AREA	1901.87 SQ.FT.	176.69 SQ.M.



UPPER LEVEL



LOWER LEVEL

FLOOR PLAN 1. All dimensions are in imperial and metric, and measured from finish to finish excluding construction tolerances. 2. All materials, dimensions, and drawings are approximate only. 3. Information is subject to change without notice, at developer's absolute discretion. 4. Actual area may vary from the stated area. 5. Drawings not to scale. 6. All images used are for illustrative purposes only and do not represent the actual size, features, specifications, fittings, and furnishings. 7. The developer reserves the right to make revisions / alterations, at it's absolute discretion, without any liability whatsoever.

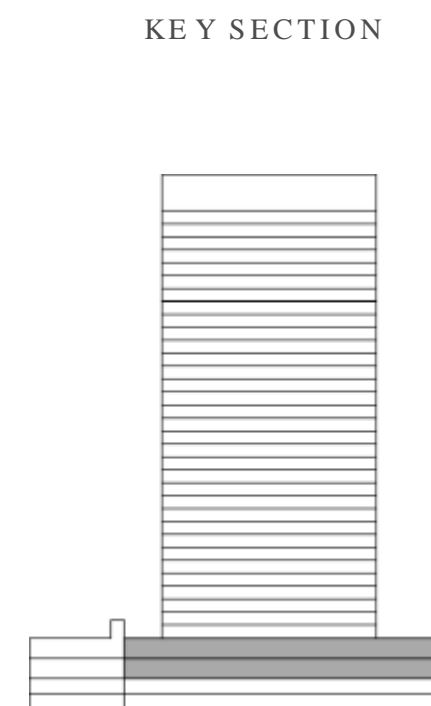
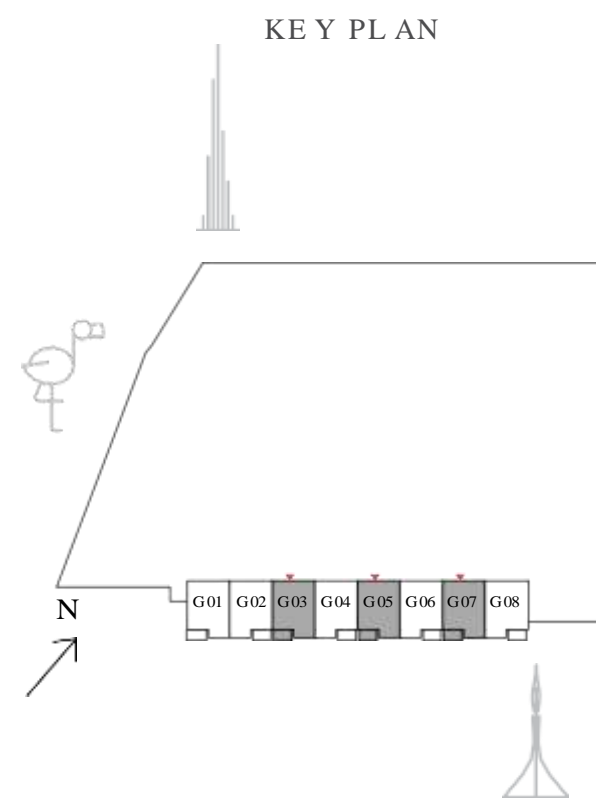
# CREEK PALACE

DUBAI CREEK HARBOUR

## 3 BEDROOM

UNIT G03, G05, G07 | GROUND LEVEL

SUITE AREA	1752.58 SQ.FT.	162.82 SQ.M.
BALCONY AREA	149.29 SQ.FT.	13.87 SQ.M.
TOTAL AREA	1901.87 SQ.FT.	176.69 SQ.M.



UPPER LEVEL



LOWER LEVEL

FLOOR PLAN 1. All dimensions are in imperial and metric, and measured from finish to finish excluding construction tolerances. 2. All materials, dimensions, and drawings are approximate only. 3. Information is subject to change without notice, at developer's absolute discretion. 4. Actual area may vary from the stated area. 5. Drawings not to scale. 6. All images used are for illustrative purposes only and do not represent the actual size, features, specifications, fittings, and furnishings. 7. The developer reserves the right to make revisions / alterations, at it's absolute discretion, without any liability whatsoever.

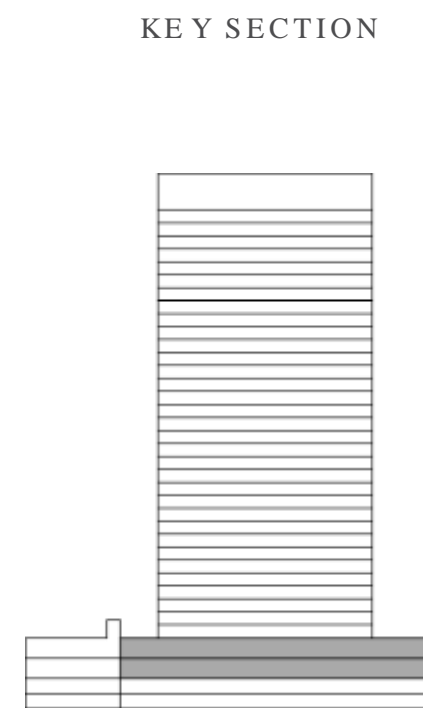
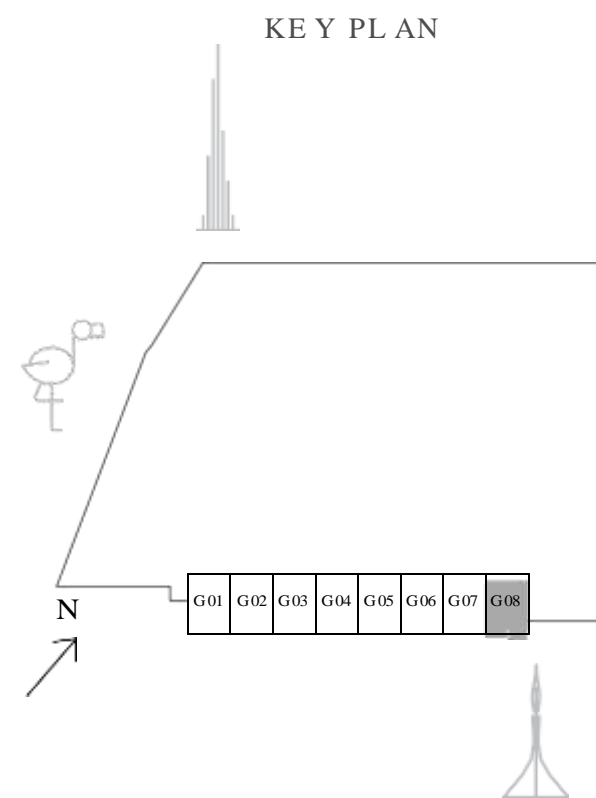
# CREEK PALACE

DUBAI CREEK HARBOUR

## 3 BEDROOM

UNIT G08 | GROUND LEVEL

SUITE AREA	1773.47 SQ.FT.	164.76 SQ.M.
BALCONY AREA	149.29 SQ.FT.	13.87 SQ.M.
TOTAL AREA	1922.76 SQ.FT.	178.63 SQ.M.



UPPER LEVEL



LOWER LEVEL

FLOOR PLAN 1. All dimensions are in imperial and metric, and measured from finish to finish excluding construction tolerances. 2. All materials, dimensions, and drawings are approximate only. 3. Information is subject to change without notice, at developer's absolute discretion. 4. Actual area may vary from the stated area. 5. Drawings not to scale. 6. All images used are for illustrative purposes only and do not represent the actual size, features, specifications, fittings, and furnishings. 7. The developer reserves the right to make revisions / alterations, at it's absolute discretion, without any liability whatsoever.

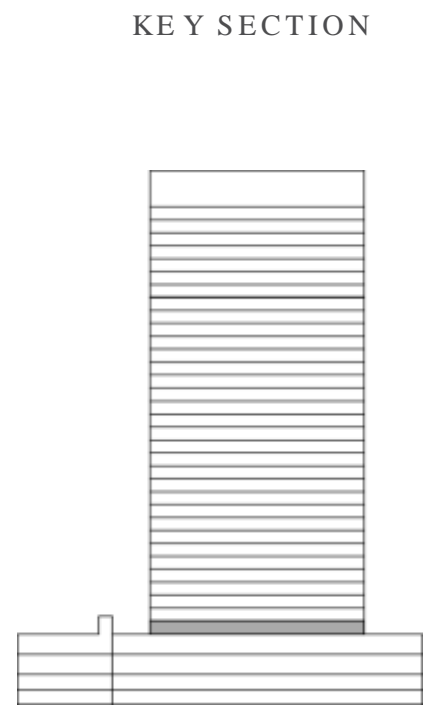
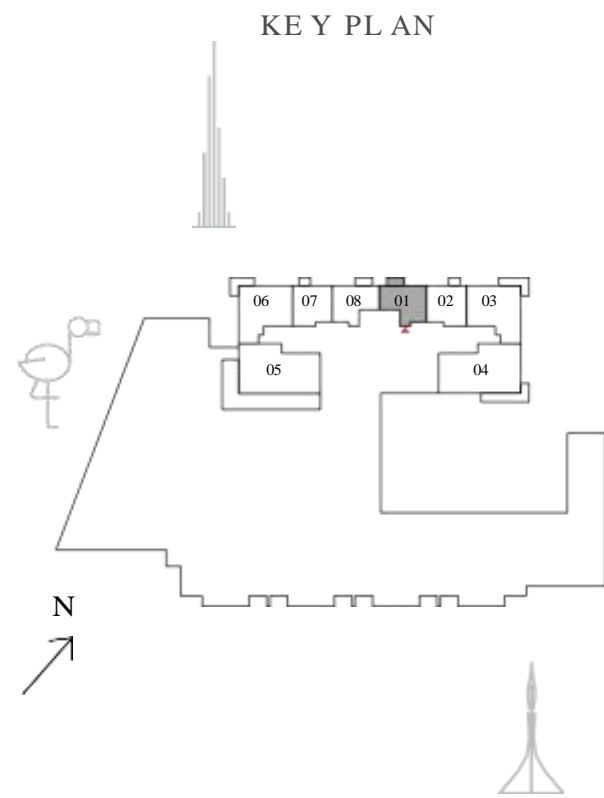
# CREEK PALACE

DUBAI CREEK HARBOUR

## 1 BEDROOM

UNIT 01 | LEVEL 01

SUITE AREA	585.88 SQ.FT.	54.43 SQ.M.
BALCONY AREA	56.51 SQ.FT.	5.25 SQ.M.
TOTAL AREA	642.39 SQ.FT.	59.68 SQ.M.



FLOOR PLAN 1. All dimensions are in imperial and metric, and measured from finish to finish excluding construction tolerances. 2. All materials, dimensions, and drawings are approximate only. 3. Information is subject to change without notice, at developer's absolute discretion. 4. Actual area may vary from the stated area. 5. Drawings not to scale. 6. All images used are for illustrative purposes only and do not represent the actual size, features, specifications, fittings, and furnishings. 7. The developer reserves the right to make revisions / alterations, at it's absolute discretion, without any liability whatsoever.

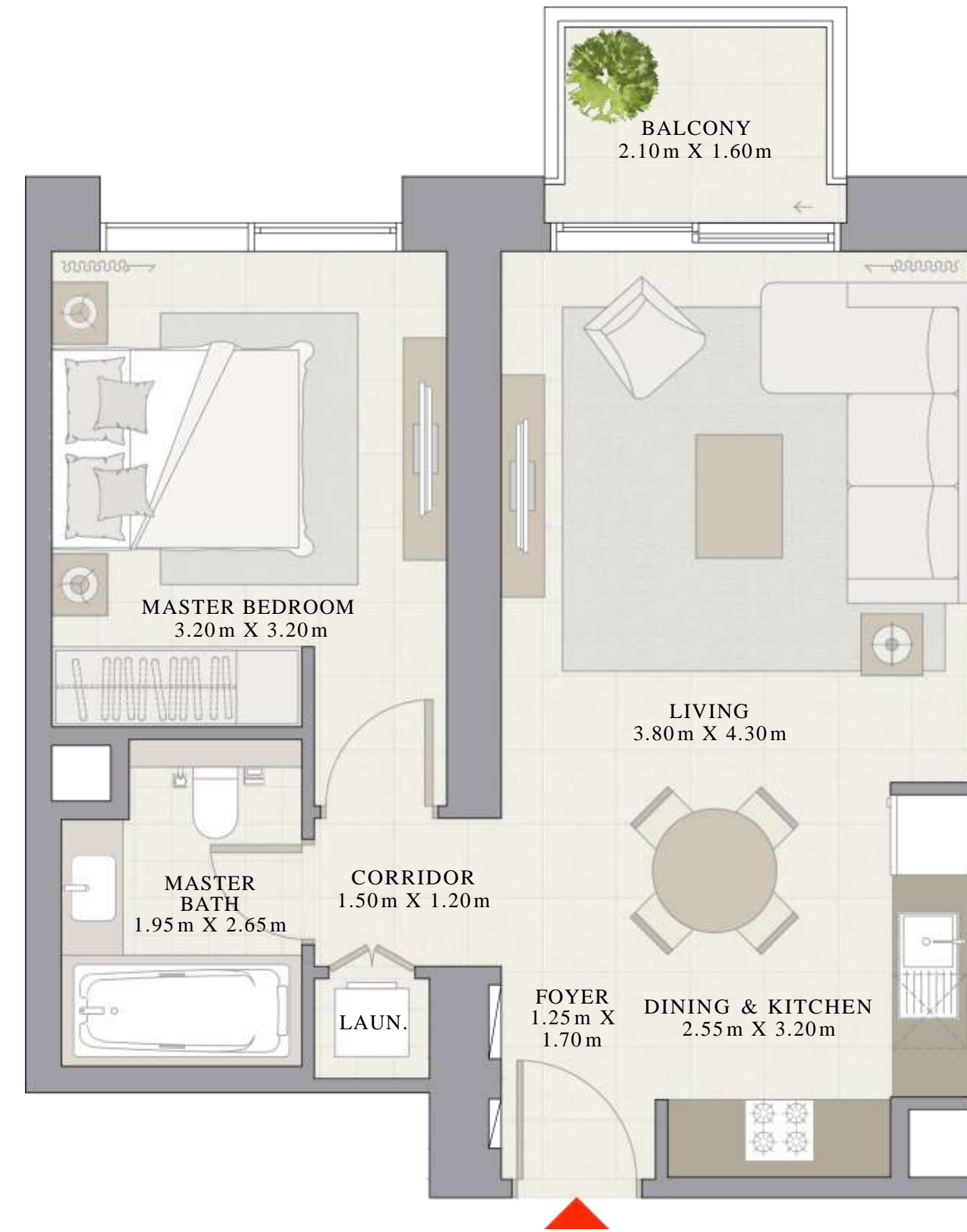
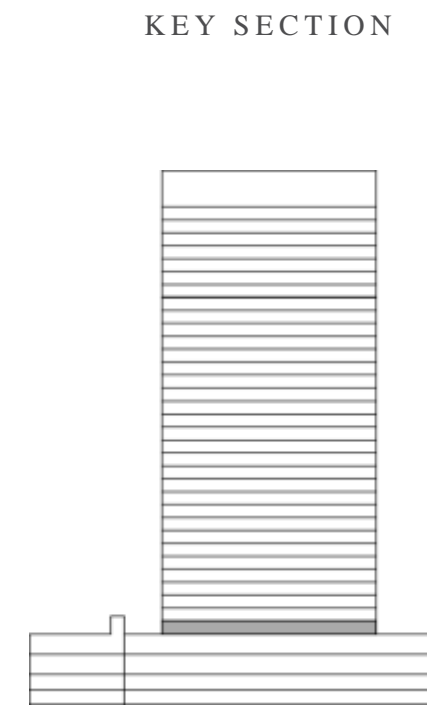
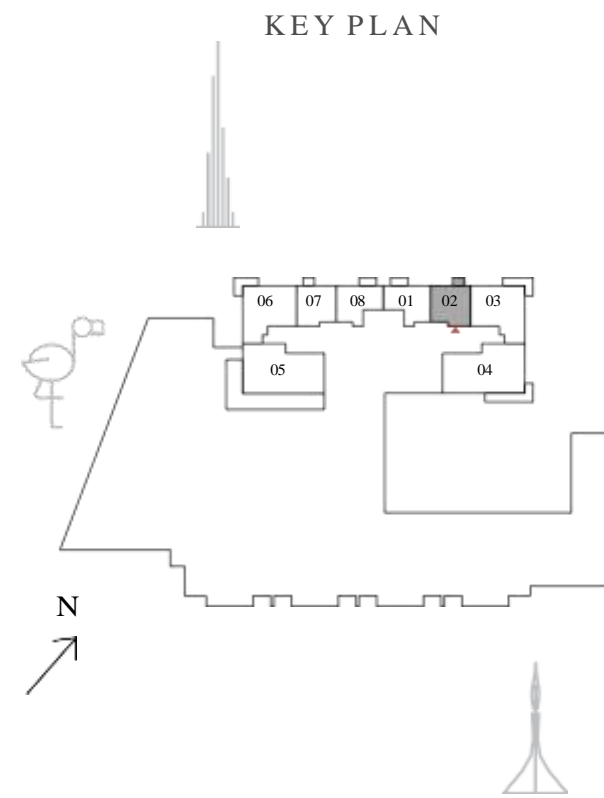
# CREEK PALACE

DUBAI CREEK HARBOUR

## 1 BEDROOM

UNIT 02 | LEVEL 01

SUITE AREA	602.24 SQ.FT.	55.95 SQ.M.
BALCONY AREA	40.90 SQ.FT.	3.80 SQ.M.
TOTAL AREA	643.14 SQ.FT.	59.75 SQ.M.



FLOOR PLAN 1. All dimensions are in imperial and metric, and measured from finish to finish excluding construction tolerances. 2. All materials, dimensions, and drawings are approximate only. 3. Information is subject to change without notice, at developer's absolute discretion. 4. Actual area may vary from the stated area. 5. Drawings not to scale. 6. All images used are for illustrative purposes only and do not represent the actual size, features, specifications, fittings, and furnishings. 7. The developer reserves the right to make revisions / alterations, at it's absolute discretion, without any liability whatsoever.

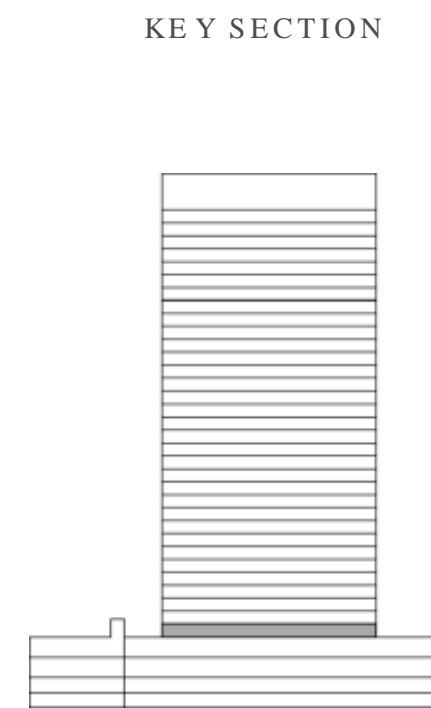
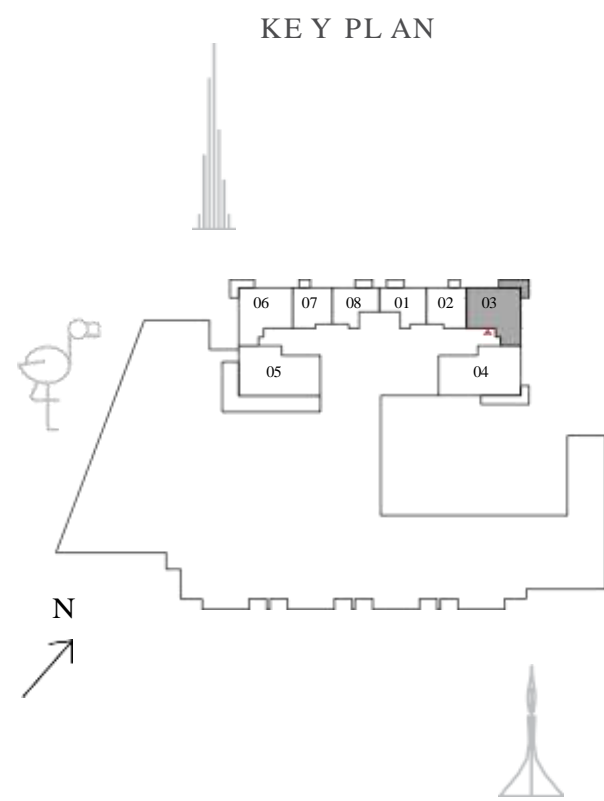
# CREEK PALACE

DUBAI CREEK HARBOUR

## 2 BEDROOM

UNIT 03 | LEVEL 01

SUITE AREA	984.14 SQ.FT.	91.43 SQ.M.
BALCONY AREA	131.53 SQ.FT.	12.22 SQ.M.
TOTAL AREA	1115.67 SQ.FT.	103.65 SQ.M.



FLOOR PLAN 1. All dimensions are in imperial and metric, and measured from finish to finish excluding construction tolerances. 2. All materials, dimensions, and drawings are approximate only. 3. Information is subject to change without notice, at developer's absolute discretion. 4. Actual area may vary from the stated area. 5. Drawings not to scale. 6. All images used are for illustrative purposes only and do not represent the actual size, features, specifications, fittings, and furnishings. 7. The developer reserves the right to make revisions / alterations, at it's absolute discretion, without any liability whatsoever.

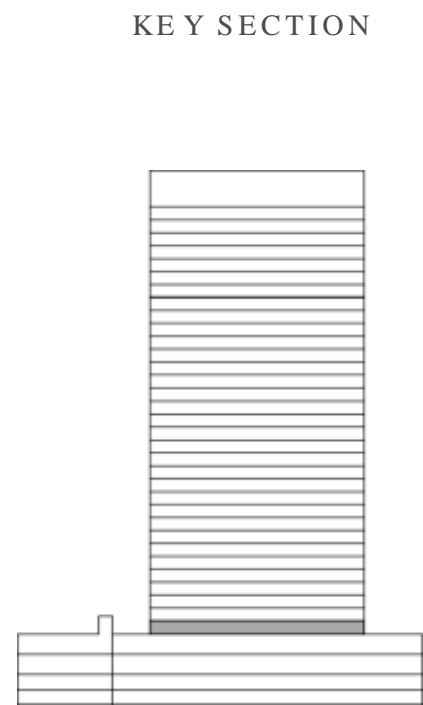
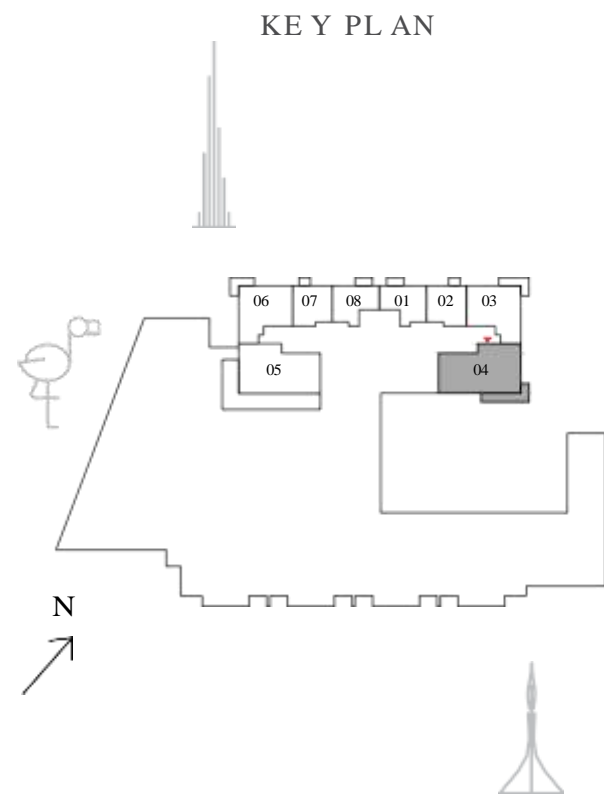
# CREEK PALACE

DUBAI CREEK HARBOUR

## 3 BEDROOM

UNIT 04 | LEVEL 01

SUITE AREA	1457.86 SQ.FT.	135.44 SQ.M.
BALCONY AREA	193.21 SQ.FT.	17.95 SQ.M.
TOTAL AREA	1651.07 SQ.FT.	153.39 SQ.M.



FLOOR PLAN 1. All dimensions are in imperial and metric, and measured from finish to finish excluding construction tolerances. 2. All materials, dimensions, and drawings are approximate only. 3. Information is subject to change without notice, at developer's absolute discretion. 4. Actual area may vary from the stated area. 5. Drawings not to scale. 6. All images used are for illustrative purposes only and do not represent the actual size, features, specifications, fittings, and furnishings. 7. The developer reserves the right to make revisions / alterations, at it's absolute discretion, without any liability whatsoever.

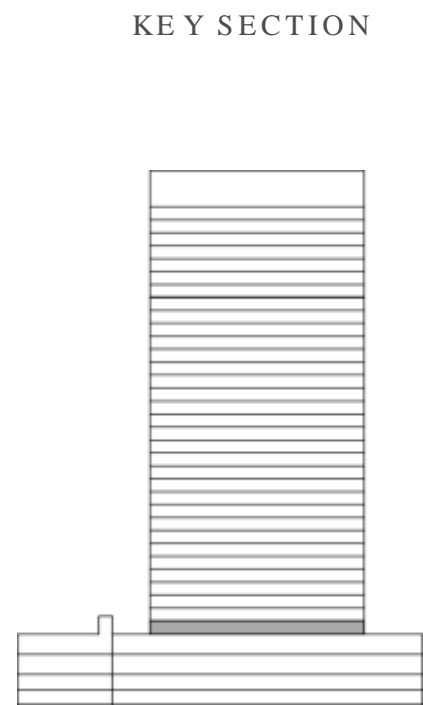
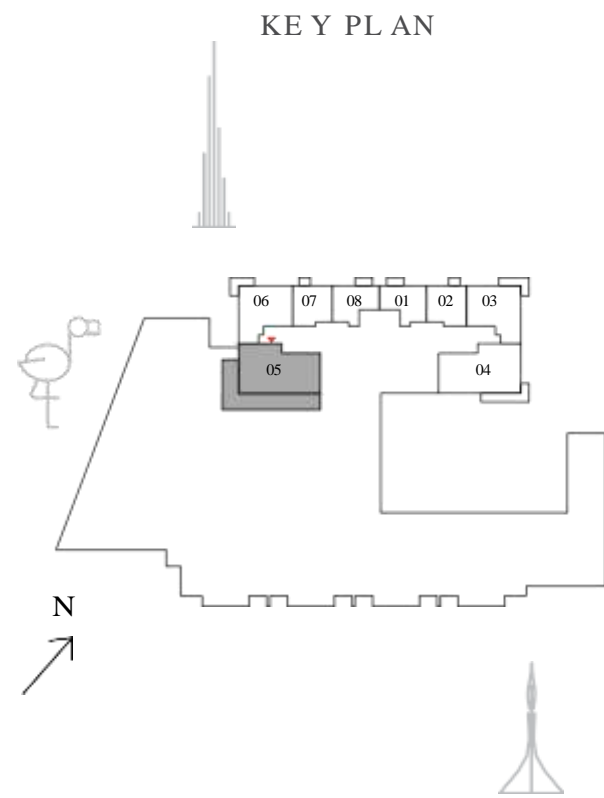
# CREEK PALACE

DUBAI CREEK HARBOUR

## 3 BEDROOM

UNIT 05 | LEVEL 01

SUITE AREA	1457.33 SQ.FT.	135.39 SQ.M.
BALCONY AREA	829.47 SQ.FT.	77.06 SQ.M.
TOTAL AREA	2286.80 SQ.FT.	212.45 SQ.M.



FLOOR PLAN 1. All dimensions are in imperial and metric, and measured from finish to finish excluding construction tolerances. 2. All materials, dimensions, and drawings are approximate only. 3. Information is subject to change without notice, at developer's absolute discretion. 4. Actual area may vary from the stated area. 5. Drawings not to scale. 6. All images used are for illustrative purposes only and do not represent the actual size, features, specifications, fittings, and furnishings. 7. The developer reserves the right to make revisions / alterations, at it's absolute discretion, without any liability whatsoever.

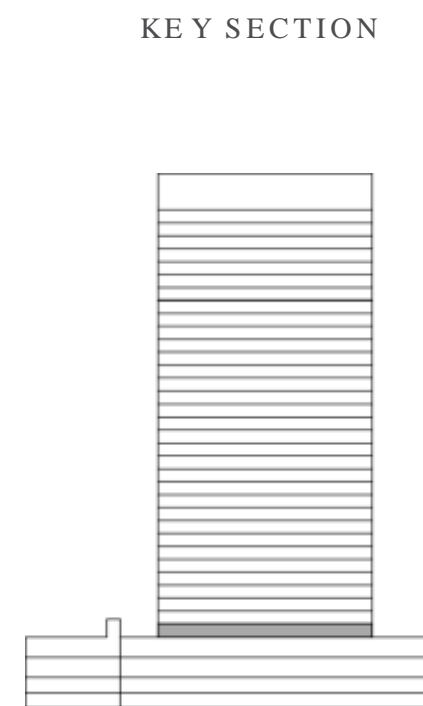
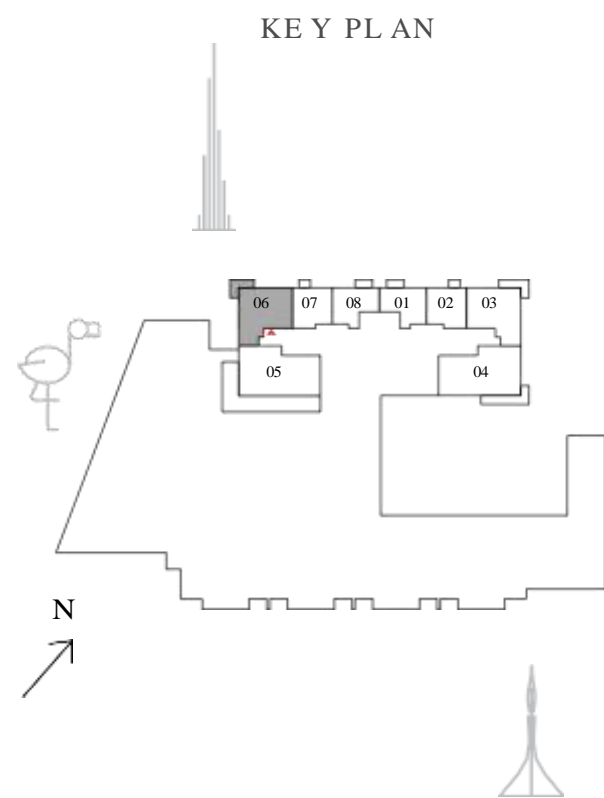
# CREEK PALACE

DUBAI CREEK HARBOUR

## 2 BEDROOM

UNIT 06 | LEVEL 01

SUITE AREA	984.14 SQ.FT.	91.43 SQ.M.
BALCONY AREA	115.82 SQ.FT.	10.76 SQ.M.
TOTAL AREA	1099.96 SQ.FT.	102.19 SQ.M.



FLOOR PLAN 1. All dimensions are in imperial and metric, and measured from finish to finish excluding construction tolerances. 2. All materials, dimensions, and drawings are approximate only. 3. Information is subject to change without notice, at developer's absolute discretion. 4. Actual area may vary from the stated area. 5. Drawings not to scale. 6. All images used are for illustrative purposes only and do not represent the actual size, features, specifications, fittings, and furnishings. 7. The developer reserves the right to make revisions / alterations, at it's absolute discretion, without any liability whatsoever.

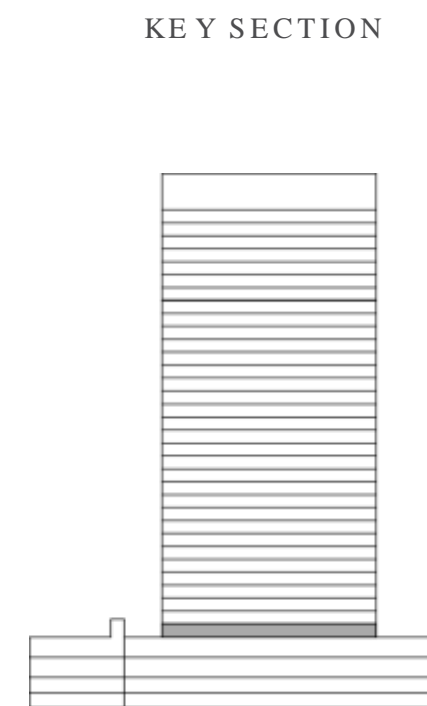
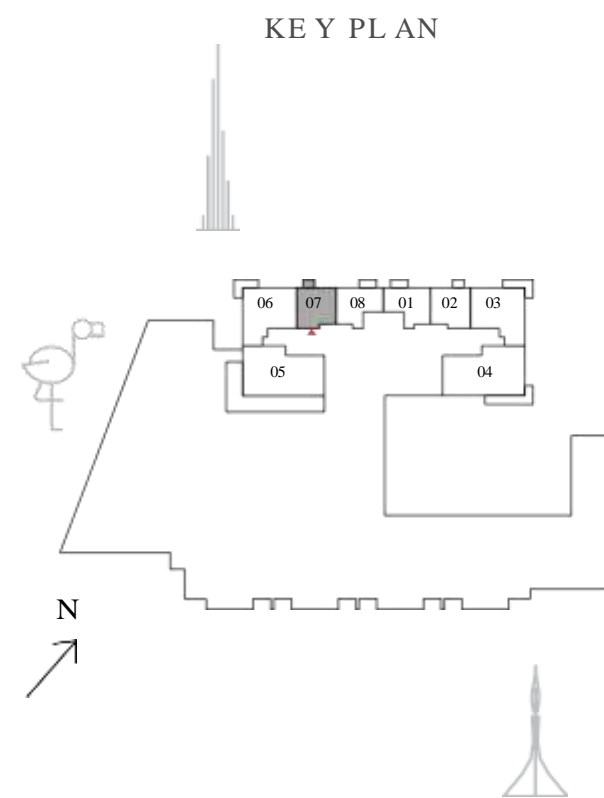
# CREEK PALACE

DUBAI CREEK HARBOUR

## 1 BEDROOM

UNIT 07 | LEVEL 01

SUITE AREA	602.24 SQ.FT.	55.95 SQ.M.
BALCONY AREA	41.12 SQ.FT.	3.82 SQ.M.
TOTAL AREA	643.36 SQ.FT.	59.77 SQ.M.



FLOOR PLAN 1. All dimensions are in imperial and metric, and measured from finish to finish excluding construction tolerances. 2. All materials, dimensions, and drawings are approximate only. 3. Information is subject to change without notice, at developer's absolute discretion. 4. Actual area may vary from the stated area. 5. Drawings not to scale. 6. All images used are for illustrative purposes only and do not represent the actual size, features, specifications, fittings, and furnishings. 7. The developer reserves the right to make revisions / alterations, at it's absolute discretion, without any liability whatsoever.

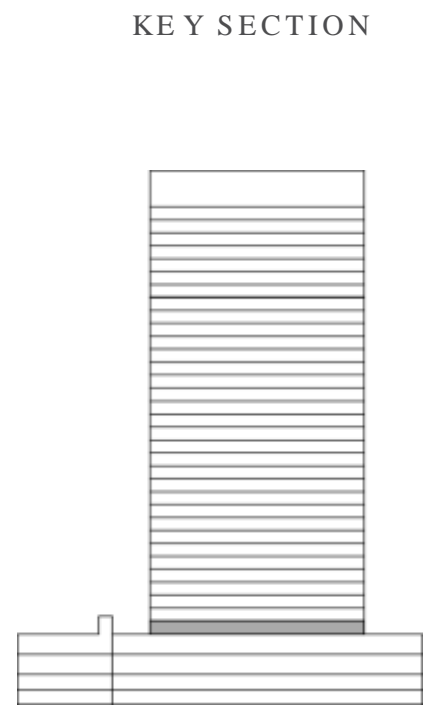
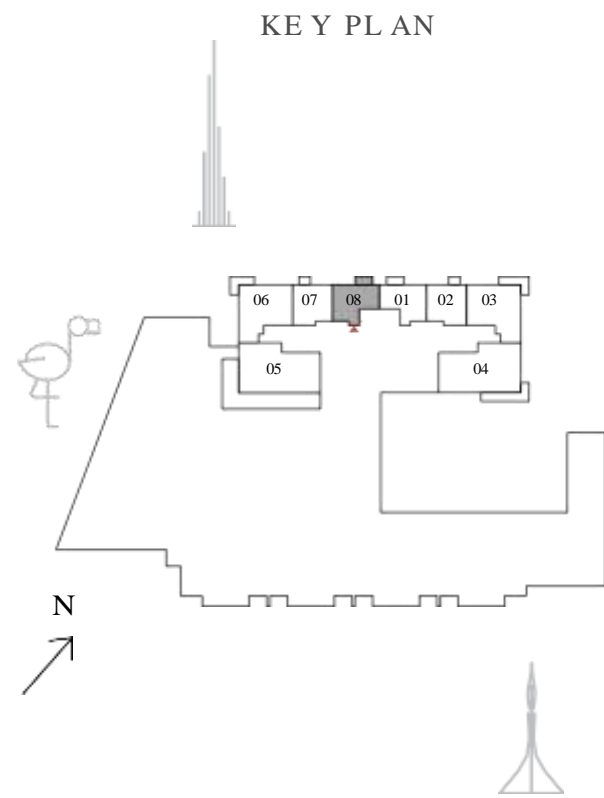
# CREEK PALACE

DUBAI CREEK HARBOUR

## 1 BEDROOM

UNIT 08 | LEVEL 01

SUITE AREA	585.88 SQ.FT.	54.43 SQ.M.
BALCONY AREA	56.73 SQ.FT.	5.27 SQ.M.
TOTAL AREA	642.61 SQ.FT.	59.70 SQ.M.



FLOOR PLAN 1. All dimensions are in imperial and metric, and measured from finish to finish excluding construction tolerances. 2. All materials, dimensions, and drawings are approximate only. 3. Information is subject to change without notice, at developer's absolute discretion. 4. Actual area may vary from the stated area. 5. Drawings not to scale. 6. All images used are for illustrative purposes only and do not represent the actual size, features, specifications, fittings, and furnishings. 7. The developer reserves the right to make revisions / alterations, at it's absolute discretion, without any liability whatsoever.

# CREEK PALACE

DUBAI CREEK HARBOUR

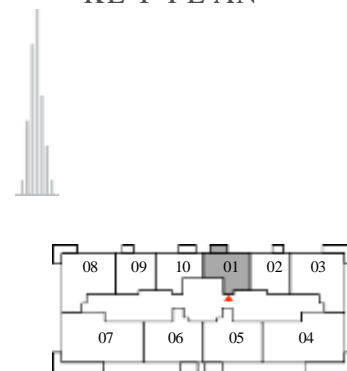
## 1 BEDROOM

UNIT 01 | LEVEL 02-19, 21-33

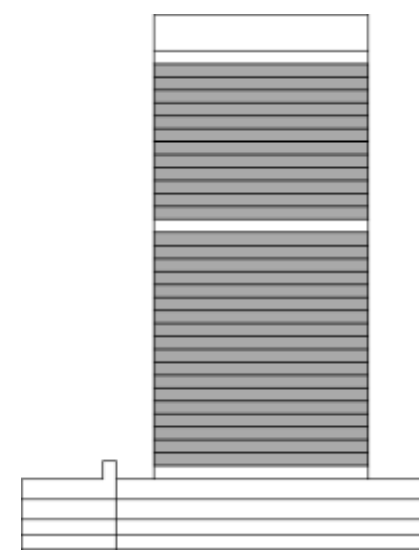
SUITE AREA	585.88 SQ.FT.	54.43 SQ.M.
BALCONY AREA	56.51 SQ.FT.	5.25 SQ.M.
TOTAL AREA	642.39 SQ.FT.	59.68 SQ.M.



KEY PLAN



KEY SECTION



FLOOR PLAN 1. All dimensions are in imperial and metric, and measured from finish to finish excluding construction tolerances. 2. All materials, dimensions, and drawings are approximate only. 3. Information is subject to change without notice, at developer's absolute discretion. 4. Actual area may vary from the stated area. 5. Drawings not to scale. 6. All images used are for illustrative purposes only and do not represent the actual size, features, specifications, fittings, and furnishings. 7. The developer reserves the right to make revisions / alterations, at it's absolute discretion, without any liability whatsoever.

# CREEK PALACE

DUBAI CREEK HARBOUR

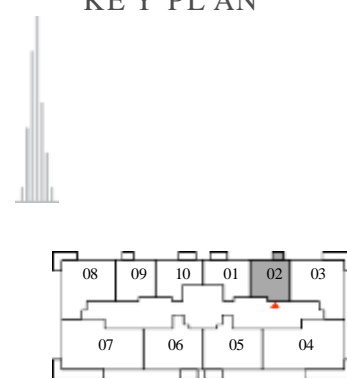
## 1 BEDROOM

UNIT 02 | LEVEL 02-19, 21-33

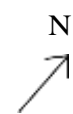
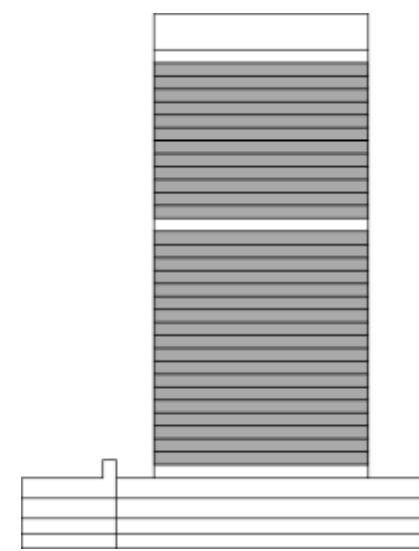
SUITE AREA	602.24 SQ.FT.	55.95 SQ.M.
BALCONY AREA	40.90 SQ.FT.	3.80 SQ.M.
TOTAL AREA	643.14 SQ.FT.	59.75 SQ.M.



KEY PLAN



KEY SECTION



FLOOR PLAN 1. All dimensions are in imperial and metric, and measured from finish to finish excluding construction tolerances. 2. All materials, dimensions, and drawings are approximate only. 3. Information is subject to change without notice, at developer's absolute discretion. 4. Actual area may vary from the stated area. 5. Drawings not to scale. 6. All images used are for illustrative purposes only and do not represent the actual size, features, specifications, fittings, and furnishings. 7. The developer reserves the right to make revisions / alterations, at it's absolute discretion, without any liability whatsoever.

# CREEK PALACE

DUBAI CREEK HARBOUR

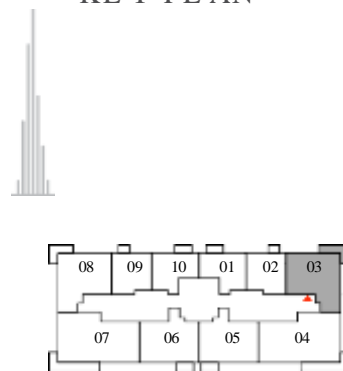
## 2 BEDROOM

UNIT 03 | LEVEL 02-19, 21-33

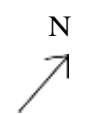
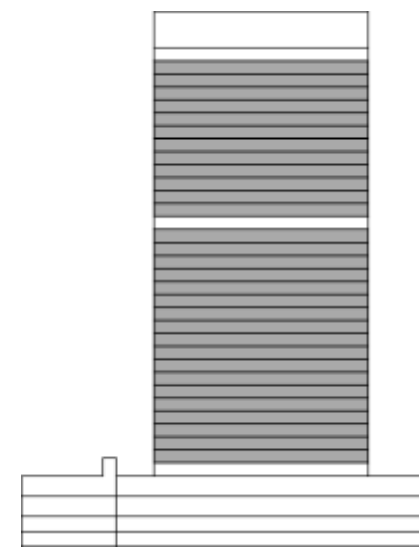
SUITE AREA	984.14 SQ.FT.	91.43 SQ.M.
BALCONY AREA	131.53 SQ.FT.	12.22 SQ.M.
TOTAL AREA	1115.67 SQ.FT.	103.65 SQ.M.



KEY PLAN



KEY SECTION



FLOOR PLAN 1. All dimensions are in imperial and metric, and measured from finish to finish excluding construction tolerances. 2. All materials, dimensions, and drawings are approximate only. 3. Information is subject to change without notice, at developer's absolute discretion. 4. Actual area may vary from the stated area. 5. Drawings not to scale. 6. All images used are for illustrative purposes only and do not represent the actual size, features, specifications, fittings, and furnishings. 7. The developer reserves the right to make revisions / alterations, at it's absolute discretion, without any liability whatsoever.

# CREEK PALACE

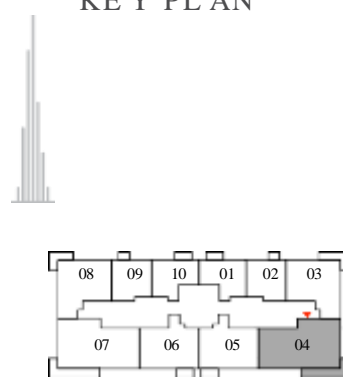
DUBAI CREEK HARBOUR

## 3 BEDROOM

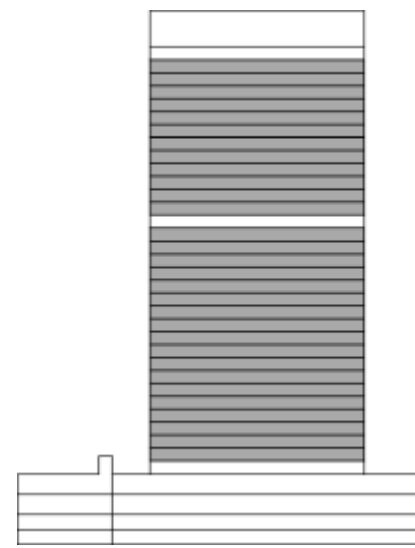
UNIT 04 | LEVEL 02-19, 21-33

SUITE AREA	1457.86 SQ.FT.	135.44 SQ.M.
BALCONY AREA	193.21 SQ.FT.	17.95 SQ.M.
TOTAL AREA	1651.07 SQ.FT.	153.39 SQ.M.

KEY PLAN



KEY SECTION



FLOOR PLAN 1. All dimensions are in imperial and metric, and measured from finish to finish excluding construction tolerances. 2. All materials, dimensions, and drawings are approximate only. 3. Information is subject to change without notice, at developer's absolute discretion. 4. Actual area may vary from the stated area. 5. Drawings not to scale. 6. All images used are for illustrative purposes only and do not represent the actual size, features, specifications, fittings, and furnishings. 7. The developer reserves the right to make revisions / alterations, at it's absolute discretion, without any liability whatsoever.

# CREEK PALACE

DUBAI CREEK HARBOUR

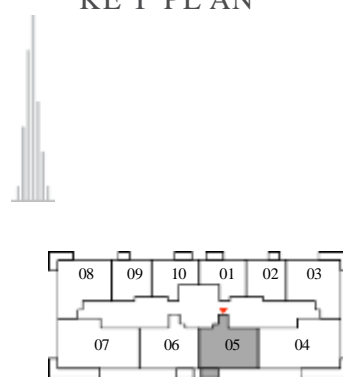
## 2 BEDROOM

UNIT 05 | LEVEL 02-19, 21-33

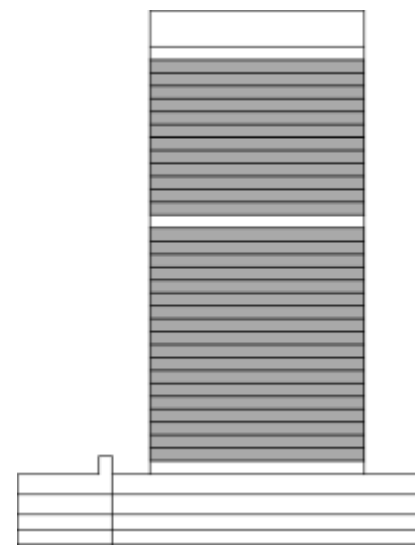
SUITE AREA	996.20 SQ.FT.	92.55 SQ.M.
BALCONY AREA	56.51 SQ.FT.	5.25 SQ.M.
TOTAL AREA	1052.71 SQ.FT.	97.80 SQ.M.



KEY PLAN



KEY SECTION



FLOOR PLAN 1. All dimensions are in imperial and metric, and measured from finish to finish excluding construction tolerances. 2. All materials, dimensions, and drawings are approximate only. 3. Information is subject to change without notice, at developer's absolute discretion. 4. Actual area may vary from the stated area. 5. Drawings not to scale. 6. All images used are for illustrative purposes only and do not represent the actual size, features, specifications, fittings, and furnishings. 7. The developer reserves the right to make revisions / alterations, at it's absolute discretion, without any liability whatsoever.

# CREEK PALACE

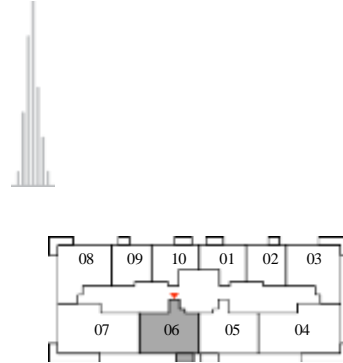
DUBAI CREEK HARBOUR

## 2 BEDROOM

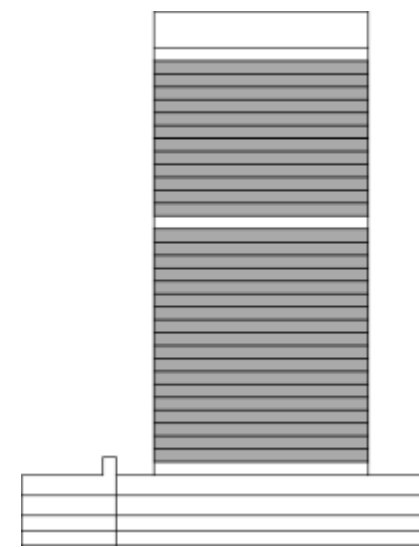
UNIT 06 | LEVEL 02-19, 21-33

SUITE AREA	1001.04 SQ.FT.	93.00 SQ.M.
BALCONY AREA	56.51 SQ.FT.	5.25 SQ.M.
TOTAL AREA	1057.55 SQ.FT.	98.25 SQ.M.

KEY PLAN



KEY SECTION



FLOOR PLAN 1. All dimensions are in imperial and metric, and measured from finish to finish excluding construction tolerances. 2. All materials, dimensions, and drawings are approximate only. 3. Information is subject to change without notice, at developer's absolute discretion. 4. Actual area may vary from the stated area. 5. Drawings not to scale. 6. All images used are for illustrative purposes only and do not represent the actual size, features, specifications, fittings, and furnishings. 7. The developer reserves the right to make revisions / alterations, at it's absolute discretion, without any liability whatsoever.

# CREEK PALACE

DUBAI CREEK HARBOUR

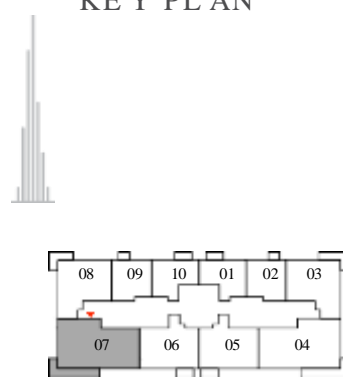
## 3 BEDROOM

UNIT 07 | LEVEL 02-19, 21-33

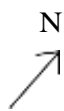
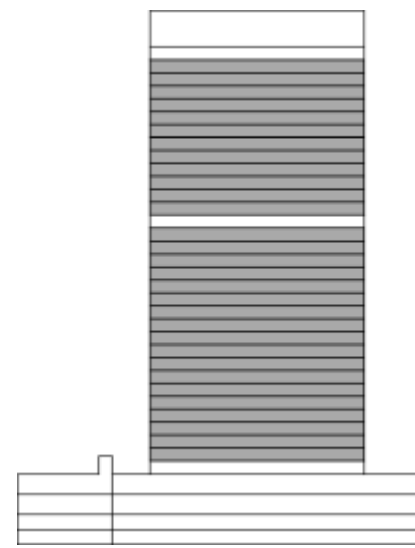
SUITE AREA	1460.02 SQ.FT.	135.64 SQ.M.
BALCONY AREA	202.04 SQ.FT.	18.77 SQ.M.
TOTAL AREA	1662.06 SQ.FT.	154.41 SQ.M.



KEY PLAN



KEY SECTION



FLOOR PLAN 1. All dimensions are in imperial and metric, and measured from finish to finish excluding construction tolerances. 2. All materials, dimensions, and drawings are approximate only. 3. Information is subject to change without notice, at developer's absolute discretion. 4. Actual area may vary from the stated area. 5. Drawings not to scale. 6. All images used are for illustrative purposes only and do not represent the actual size, features, specifications, fittings, and furnishings. 7. The developer reserves the right to make revisions / alterations, at it's absolute discretion, without any liability whatsoever.

# CREEK PALACE

DUBAI CREEK HARBOUR

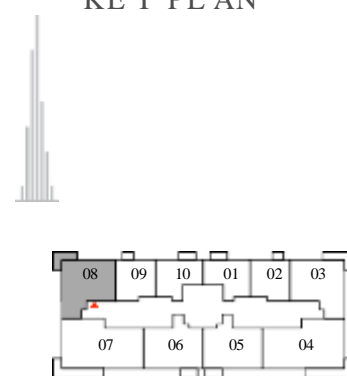
## 2 BEDROOM

UNIT 08 | LEVEL 02-19, 21-33

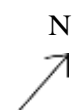
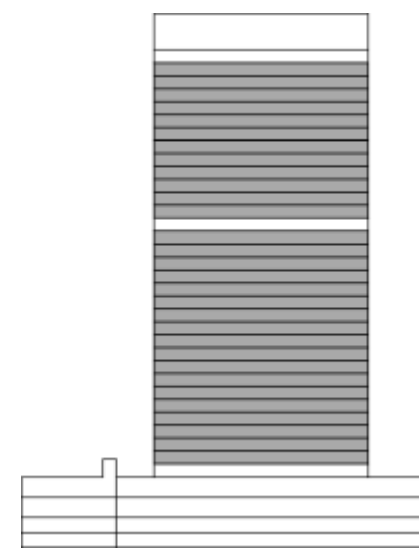
SUITE AREA	984.14 SQ.FT.	91.43 SQ.M.
BALCONY AREA	115.82 SQ.FT.	10.76 SQ.M.
TOTAL AREA	1099.96 SQ.FT.	102.19 SQ.M.



KEY PLAN



KEY SECTION



FLOOR PLAN 1. All dimensions are in imperial and metric, and measured from finish to finish excluding construction tolerances. 2. All materials, dimensions, and drawings are approximate only. 3. Information is subject to change without notice, at developer's absolute discretion. 4. Actual area may vary from the stated area. 5. Drawings not to scale. 6. All images used are for illustrative purposes only and do not represent the actual size, features, specifications, fittings, and furnishings. 7. The developer reserves the right to make revisions / alterations, at it's absolute discretion, without any liability whatsoever.

# CREEK PALACE

DUBAI CREEK HARBOUR

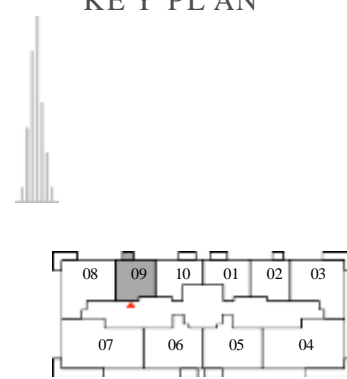
## 1 BEDROOM

UNIT 09 | LEVEL 02-19, 21-33

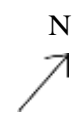
SUITE AREA	602.24 SQ.FT.	55.95 SQ.M.
BALCONY AREA	41.12 SQ.FT.	3.82 SQ.M.
TOTAL AREA	643.36 SQ.FT.	59.77 SQ.M.



KEY PLAN



KEY SECTION



FLOOR PLAN 1. All dimensions are in imperial and metric, and measured from finish to finish excluding construction tolerances. 2. All materials, dimensions, and drawings are approximate only. 3. Information is subject to change without notice, at developer's absolute discretion. 4. Actual area may vary from the stated area. 5. Drawings not to scale. 6. All images used are for illustrative purposes only and do not represent the actual size, features, specifications, fittings, and furnishings. 7. The developer reserves the right to make revisions / alterations, at it's absolute discretion, without any liability whatsoever.

# CREEK PALACE

DUBAI CREEK HARBOUR

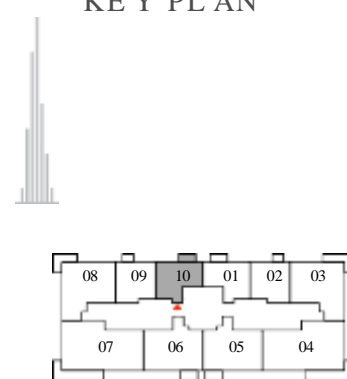
## 1 BEDROOM

UNIT 10 | LEVEL 02-19, 21-33

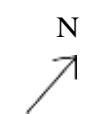
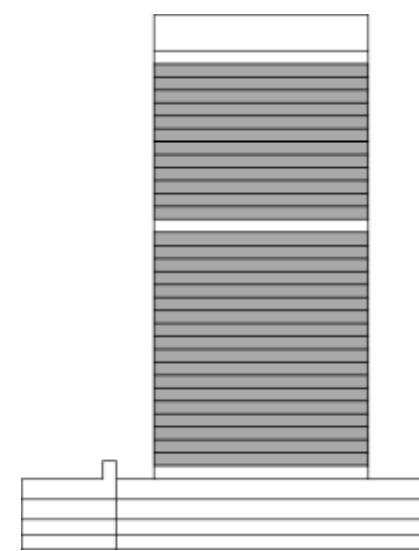
SUITE AREA	585.88 SQ.FT.	54.43 SQ.M.
BALCONY AREA	56.73 SQ.FT.	5.27 SQ.M.
TOTAL AREA	642.61 SQ.FT.	59.70 SQ.M.



KEY PLAN



KEY SECTION



FLOOR PLAN 1. All dimensions are in imperial and metric, and measured from finish to finish excluding construction tolerances. 2. All materials, dimensions, and drawings are approximate only. 3. Information is subject to change without notice, at developer's absolute discretion. 4. Actual area may vary from the stated area. 5. Drawings not to scale. 6. All images used are for illustrative purposes only and do not represent the actual size, features, specifications, fittings, and furnishings. 7. The developer reserves the right to make revisions / alterations, at it's absolute discretion, without any liability whatsoever.

# CREEK PALACE

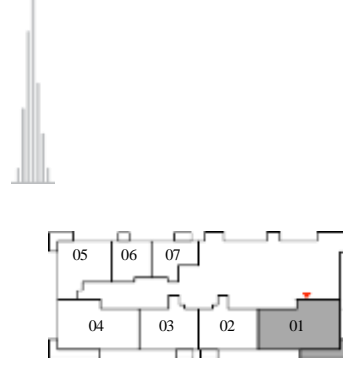
DUBAI CREEK HARBOUR

## 3 BEDROOM

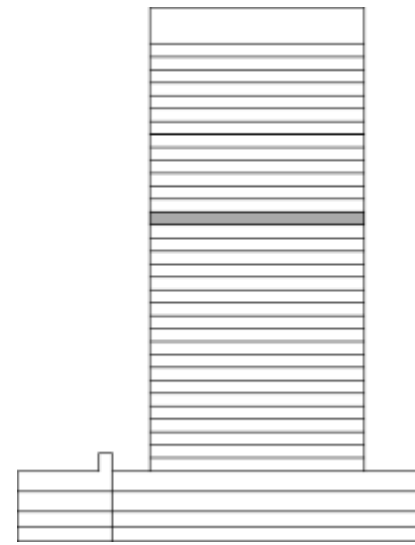
UNIT 01 | LEVEL 20

SUITE AREA	1457.86 SQ.FT.	135.44 SQ.M.
BALCONY AREA	193.21 SQ.FT.	17.95 SQ.M.
TOTAL AREA	1651.07 SQ.FT.	153.39 SQ.M.

KEY PLAN



KEY SECTION



FLOOR PLAN 1. All dimensions are in imperial and metric, and measured from finish to finish excluding construction tolerances. 2. All materials, dimensions, and drawings are approximate only. 3. Information is subject to change without notice, at developer's absolute discretion. 4. Actual area may vary from the stated area. 5. Drawings not to scale. 6. All images used are for illustrative purposes only and do not represent the actual size, features, specifications, fittings, and furnishings. 7. The developer reserves the right to make revisions / alterations, at it's absolute discretion, without any liability whatsoever.

# CREEK PALACE

DUBAI CREEK HARBOUR

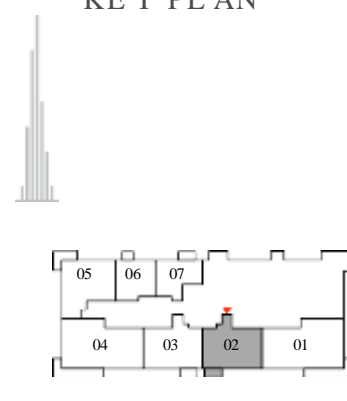
## 2 BEDROOM

UNIT 02 | LEVEL 20

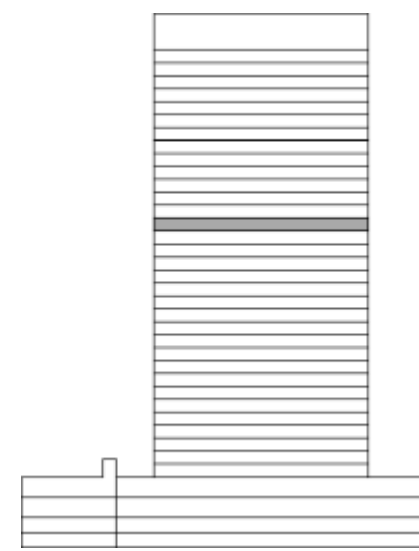
SUITE AREA	996.20 SQ.FT.	92.55 SQ.M.
BALCONY AREA	56.51 SQ.FT.	5.25 SQ.M.
TOTAL AREA	1052.71 SQ.FT.	97.80 SQ.M.



KEY PLAN



KEY SECTION



FLOOR PLAN 1. All dimensions are in imperial and metric, and measured from finish to finish excluding construction tolerances. 2. All materials, dimensions, and drawings are approximate only. 3. Information is subject to change without notice, at developer's absolute discretion. 4. Actual area may vary from the stated area. 5. Drawings not to scale. 6. All images used are for illustrative purposes only and do not represent the actual size, features, specifications, fittings, and furnishings. 7. The developer reserves the right to make revisions / alterations, at it's absolute discretion, without any liability whatsoever.

# CREEK PALACE

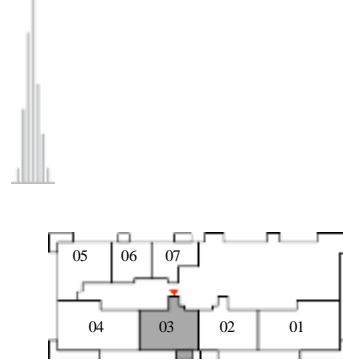
DUBAI CREEK HARBOUR

## 2 BEDROOM

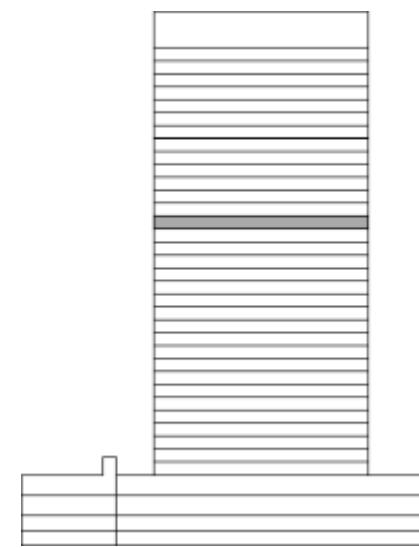
UNIT 03 | LEVEL 20

SUITE AREA	1001.04 SQ.FT.	93.00 SQ.M.
BALCONY AREA	56.51 SQ.FT.	5.25 SQ.M.
TOTAL AREA	1057.55 SQ.FT.	98.25 SQ.M.

KEY PLAN



KEY SECTION



FLOOR PLAN 1. All dimensions are in imperial and metric, and measured from finish to finish excluding construction tolerances. 2. All materials, dimensions, and drawings are approximate only. 3. Information is subject to change without notice, at developer's absolute discretion. 4. Actual area may vary from the stated area. 5. Drawings not to scale. 6. All images used are for illustrative purposes only and do not represent the actual size, features, specifications, fittings, and furnishings. 7. The developer reserves the right to make revisions / alterations, at it's absolute discretion, without any liability whatsoever.

# CREEK PALACE

DUBAI CREEK HARBOUR

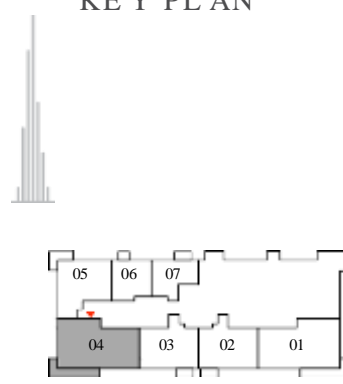
## 3 BEDROOM

UNIT 04 | LEVEL 20

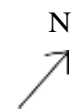
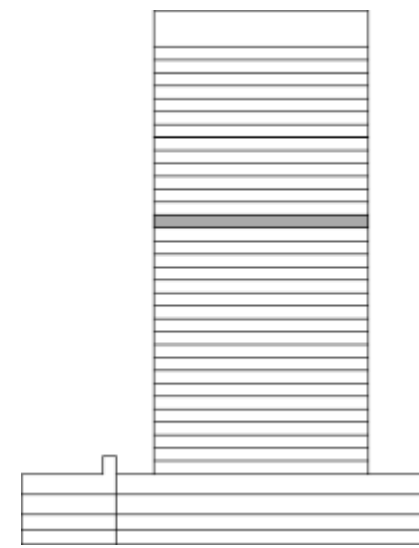
SUITE AREA	1460.02 SQ.FT.	135.64 SQ.M.
BALCONY AREA	202.04 SQ.FT.	18.77 SQ.M.
TOTAL AREA	1662.06 SQ.FT.	154.41 SQ.M.



KEY PLAN



KEY SECTION



FLOOR PLAN 1. All dimensions are in imperial and metric, and measured from finish to finish excluding construction tolerances. 2. All materials, dimensions, and drawings are approximate only. 3. Information is subject to change without notice, at developer's absolute discretion. 4. Actual area may vary from the stated area. 5. Drawings not to scale. 6. All images used are for illustrative purposes only and do not represent the actual size, features, specifications, fittings, and furnishings. 7. The developer reserves the right to make revisions / alterations, at it's absolute discretion, without any liability whatsoever.

# CREEK PALACE

DUBAI CREEK HARBOUR

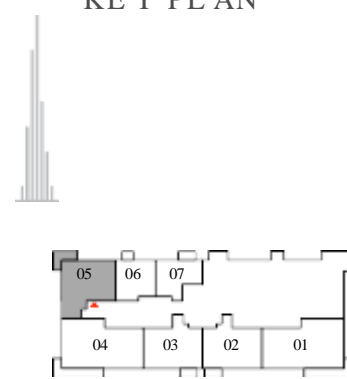
## 2 BEDROOM

UNIT 05 | LEVEL 20

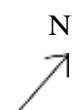
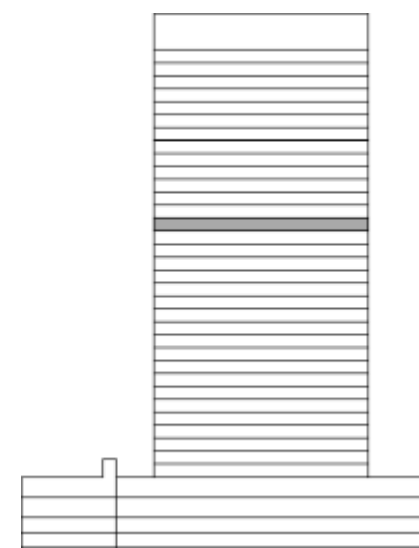
SUITE AREA	984.14 SQ.FT.	91.43 SQ.M.
BALCONY AREA	115.82 SQ.FT.	10.76 SQ.M.
TOTAL AREA	1099.96 SQ.FT.	102.19 SQ.M.



KEY PLAN



KEY SECTION



FLOOR PLAN 1. All dimensions are in imperial and metric, and measured from finish to finish excluding construction tolerances. 2. All materials, dimensions, and drawings are approximate only. 3. Information is subject to change without notice, at developer's absolute discretion. 4. Actual area may vary from the stated area. 5. Drawings not to scale. 6. All images used are for illustrative purposes only and do not represent the actual size, features, specifications, fittings, and furnishings. 7. The developer reserves the right to make revisions / alterations, at it's absolute discretion, without any liability whatsoever.

# CREEK PALACE

DUBAI CREEK HARBOUR

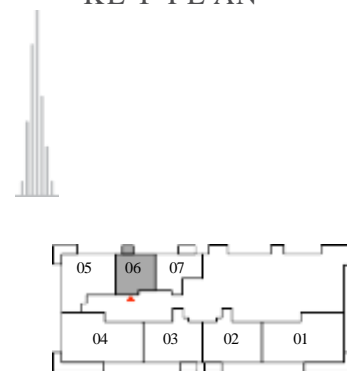
## 1 BEDROOM

UNIT 06 | LEVEL 20

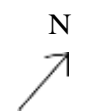
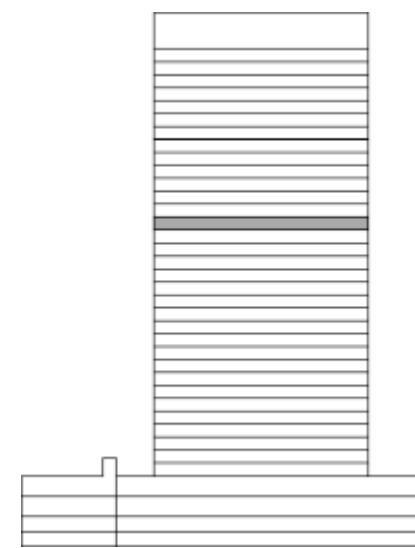
SUITE AREA	602.24 SQ.FT.	55.95 SQ.M.
BALCONY AREA	41.12 SQ.FT.	3.82 SQ.M.
TOTAL AREA	643.36 SQ.FT.	59.77 SQ.M.



KEY PLAN



KEY SECTION



FLOOR PLAN 1. All dimensions are in imperial and metric, and measured from finish to finish excluding construction tolerances. 2. All materials, dimensions, and drawings are approximate only. 3. Information is subject to change without notice, at developer's absolute discretion. 4. Actual area may vary from the stated area. 5. Drawings not to scale. 6. All images used are for illustrative purposes only and do not represent the actual size, features, specifications, fittings, and furnishings. 7. The developer reserves the right to make revisions / alterations, at it's absolute discretion, without any liability whatsoever.

# CREEK PALACE

DUBAI CREEK HARBOUR

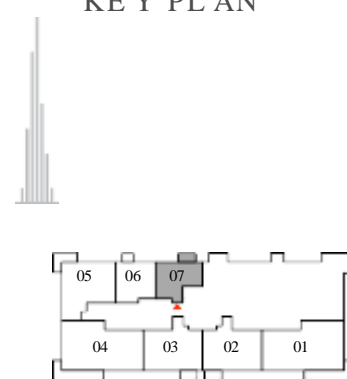
## 1 BEDROOM

UNIT 07 | LEVEL 20

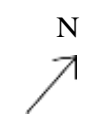
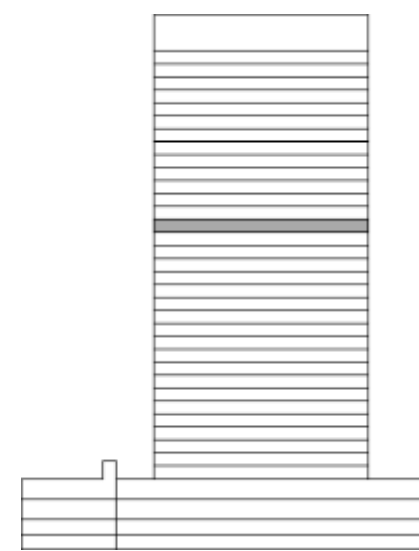
SUITE AREA	585.88 SQ.FT.	54.43 SQ.M.
BALCONY AREA	56.73 SQ.FT.	5.27 SQ.M.
TOTAL AREA	642.61 SQ.FT.	59.70 SQ.M.



KEY PLAN



KEY SECTION



FLOOR PLAN 1. All dimensions are in imperial and metric, and measured from finish to finish excluding construction tolerances. 2. All materials, dimensions, and drawings are approximate only. 3. Information is subject to change without notice, at developer's absolute discretion. 4. Actual area may vary from the stated area. 5. Drawings not to scale. 6. All images used are for illustrative purposes only and do not represent the actual size, features, specifications, fittings, and furnishings. 7. The developer reserves the right to make revisions / alterations, at it's absolute discretion, without any liability whatsoever.

UAE

Maison D'Ahmed

<https://maisondahmed.wasmer.app> - <https://luxwealthglobal.base44.app>

EMAAR