

**ST REGIS**  
DOWNTOWN • DUBAI  
**THE RESIDENCES**

TOWER 02

FLOOR PLAN

**EMAAR**

# ST REGIS

DOWNTOWN • DUBAI  
THE RESIDENCES

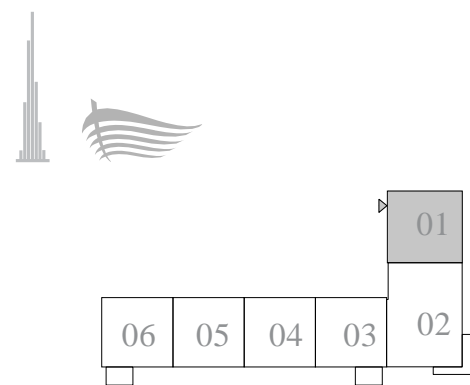
TOWER 2

## 1 BEDROOM TYPE C

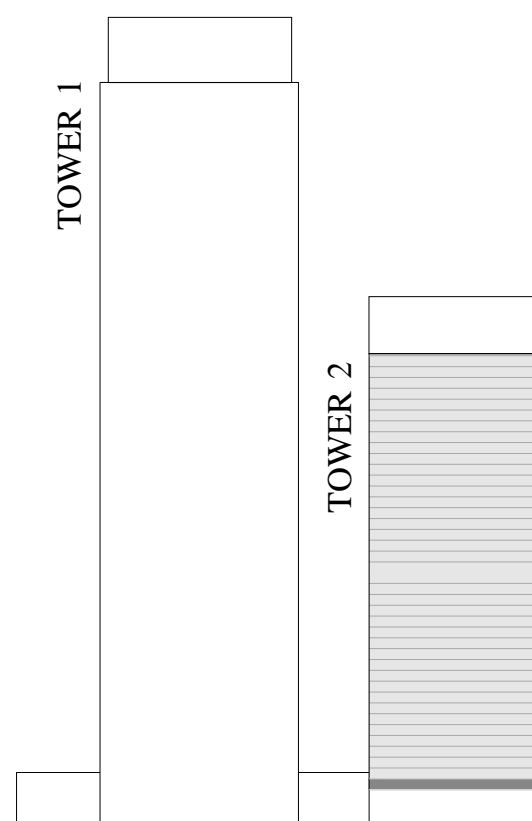
UNIT 01 | LEVEL PODIUM-2

SUITE AREA	787.16 SQ.FT.	73.13 SQ.M.
BALCONY AREA	0 SQ.FT.	0 SQ.M.
TOTAL AREA	787.16 SQ.FT.	73.13 SQ.M.

KEY PLAN LEVEL  
PODIUM-2



KEY SECTION



N ←

FLOOR PLAN 1. All dimensions are in imperial and metric, and measured from finish to finish excluding construction tolerances. 2. All materials, dimensions, and drawings are approximate only. 3. Information is subject to change without notice, at developer's absolute discretion. 4. Actual area may vary from the stated area. 5. Drawings not to scale. 6. All images used are for illustrative purposes only and do not represent the actual size, features, specifications, fittings, and furnishings. 7. The developer reserves the right to make revisions / alterations, at its absolute discretion, without any liability whatsoever. The St. Regis Residences, Downtown Dubai are not owned, developed or sold by Marriott International, Inc., or their affiliates ("Marriott"). Emaar Properties PJSC ("Emaar") uses The St. Regis marks under a license from Marriott, which has not confirmed the accuracy of any of the statements or representations made herein.

# ST REGIS

DOWNTOWN DUBAI  
THE RESIDENCES

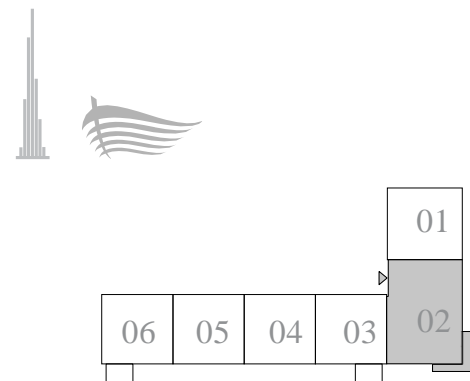
TOWER 2

## 2 BED ROOM TYPE B 1

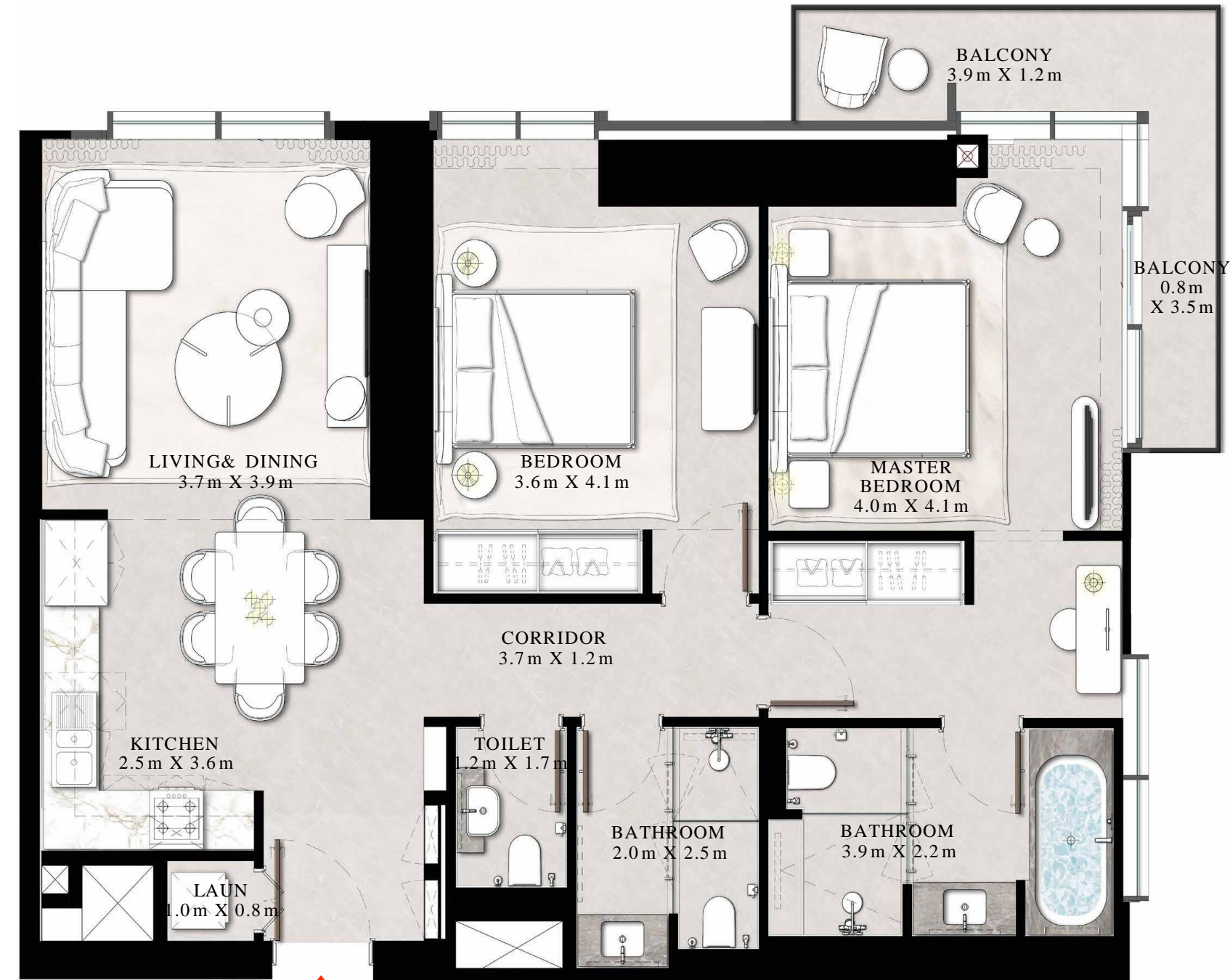
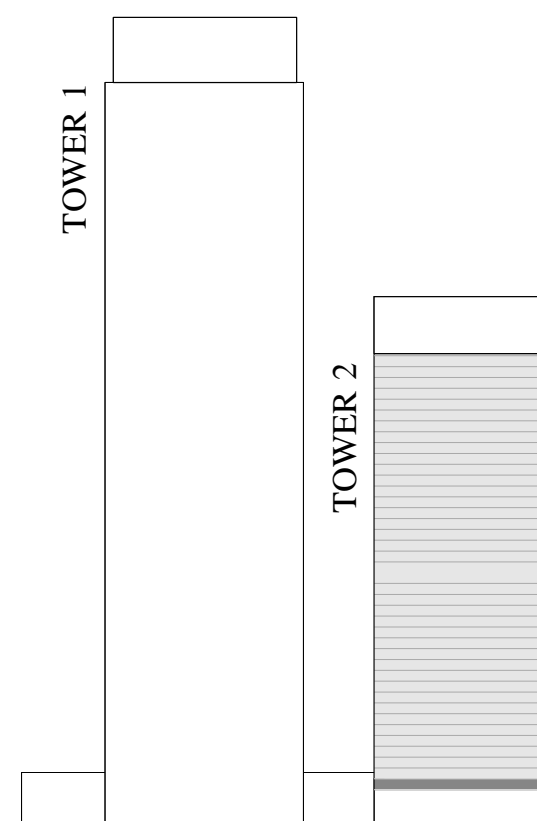
UNIT 02 | LEVEL PODIUM-2

SUITE AREA	1135.38 SQ.FT.	105.48 SQ.M.
BALCONY AREA	108.61 SQ.FT.	10.09 SQ.M.
TOTAL AREA	1243.99 SQ.FT.	115.57 SQ.M.

KEY PLAN LEVEL  
PODIUM-2



KEY SECTION



N ←

FLOOR PLAN 1. All dimensions are in imperial and metric, and measured from finish to finish excluding construction tolerances. 2. All materials, dimensions, and drawings are approximate only. 3. Information is subject to change without notice, at developer's absolute discretion. 4. Actual area may vary from the stated area. 5. Drawings not to scale. 6. All images used are for illustrative purposes only and do not represent the actual size, features, specifications, fittings, and furnishings. 7. The developer reserves the right to make revisions / alterations, at its absolute discretion, without any liability whatsoever. The St. Regis Residences, Downtown Dubai are not owned, developed or sold by Marriott International, Inc., or their affiliates ("Marriott"). Emaar Properties PJSC ("Emaar") uses The St. Regis marks under a license from Marriott, which has not confirmed the accuracy of any of the statements or representations made herein.

# ST REGIS

DOWNTOWN • DUBAI  
THE RESIDENCES

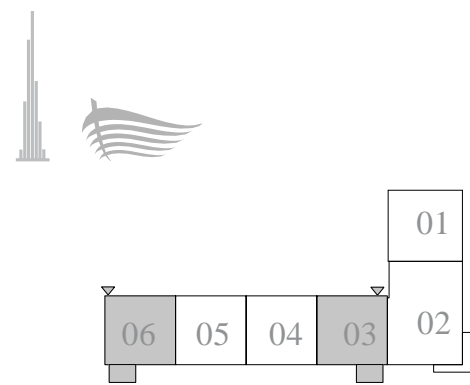
TOWER 2

## 1 BEDROOM TYPE A

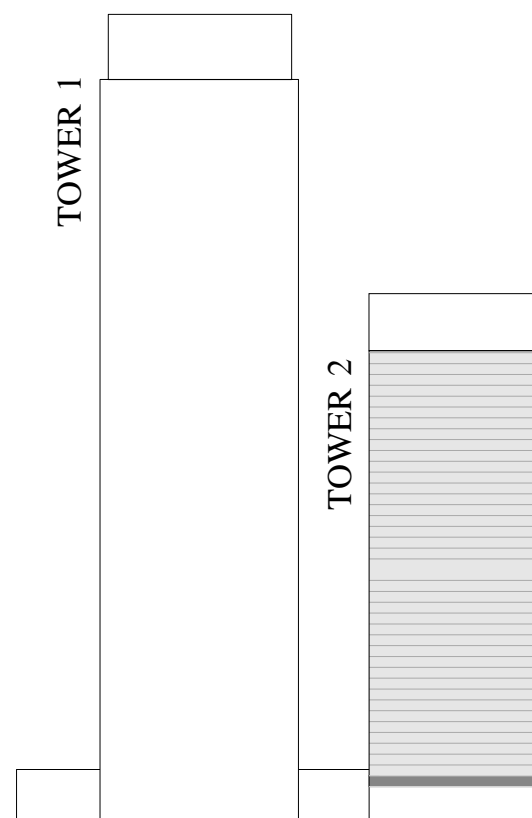
UNITS 03 & 06 | LEVEL PODIUM-2

SUITE AREA	720.97 SQ.FT.	66.98 SQ.M.
BALCONY AREA	71.15 SQ.FT.	6.61 SQ.M.
TOTAL AREA	792.12 SQ.FT.	73.59 SQ.M.

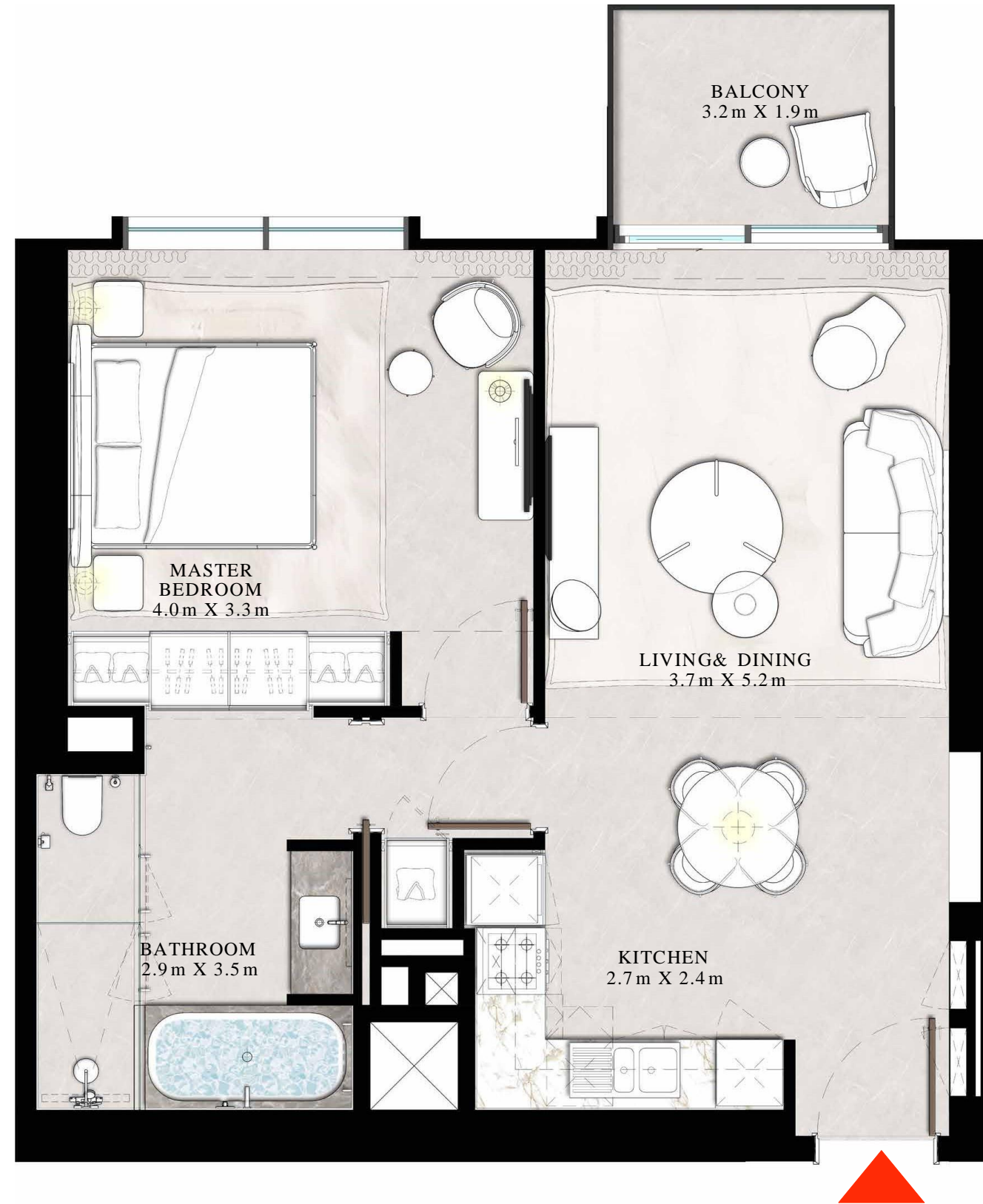
KEY PLAN LEVEL  
PODIUM-2



KEY SECTION



N ←



FLOOR PLAN 1. All dimensions are in imperial and metric, and measured from finish to finish excluding construction tolerances. 2. All materials, dimensions, and drawings are approximate only. 3. Information is subject to change without notice, at developer's absolute discretion. 4. Actual area may vary from the stated area. 5. Drawings not to scale. 6. All images used are for illustrative purposes only and do not represent the actual size, features, specifications, fittings, and furnishings. 7. The developer reserves the right to make revisions / alterations, at its absolute discretion, without any liability whatsoever. The St. Regis Residences, Downtown Dubai are not owned, developed or sold by Marriott International, Inc., or their affiliates ("Marriott"). Emaar Properties PJSC ("Emaar") uses The St. Regis marks under a license from Marriott, which has not confirmed the accuracy of any of the statements or representations made herein.

# ST REGIS

DOWNTOWN • DUBAI  
THE RESIDENCES

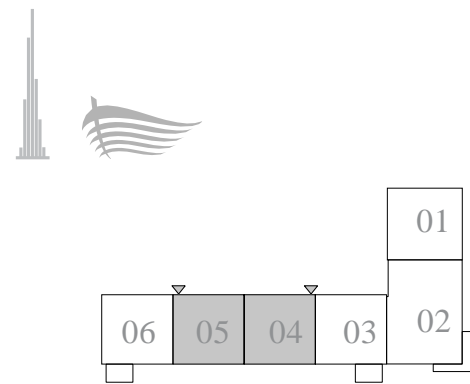
TOWER 2

## 1 BEDROOM TYPE A1

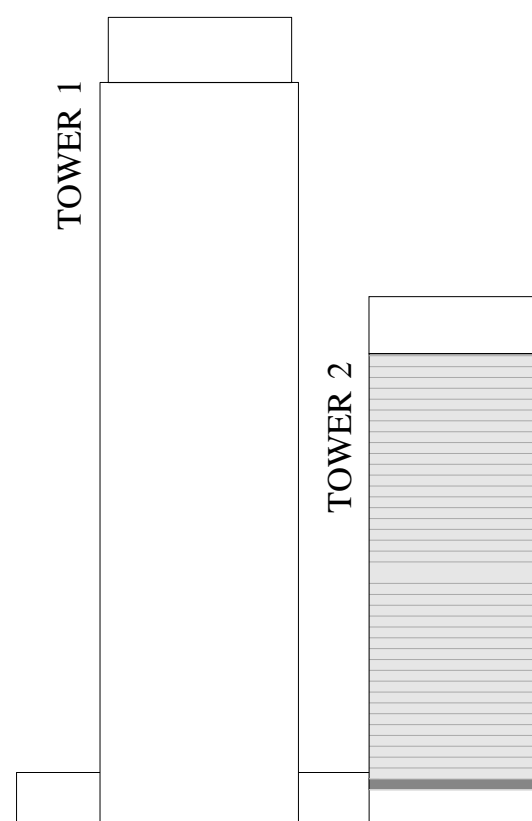
UNITS 04 & 05 | LEVEL PODIUM-2

SUITE AREA	720.86 SQ.FT.	66.97 SQ.M.
BALCONY AREA	0 SQ.FT.	0 SQ.M.
TOTAL AREA	720.86 SQ.FT.	66.97 SQ.M.

KEY PLAN LEVEL  
PODIUM-2



KEY SECTION



N ←

FLOOR PLAN 1. All dimensions are in imperial and metric, and measured from finish to finish excluding construction tolerances. 2. All materials, dimensions, and drawings are approximate only. 3. Information is subject to change without notice, at developer's absolute discretion. 4. Actual area may vary from the stated area. 5. Drawings not to scale. 6. All images used are for illustrative purposes only and do not represent the actual size, features, specifications, fittings, and furnishings. 7. The developer reserves the right to make revisions / alterations, at its absolute discretion, without any liability whatsoever. The St. Regis Residences, Downtown Dubai are not owned, developed or sold by Marriott International, Inc., or their affiliates ("Marriott"). Emaar Properties PJSC ("Emaar") uses The St. Regis marks under a license from Marriott, which has not confirmed the accuracy of any of the statements or representations made herein.

# ST REGIS

DOWNTOWN • DUBAI  
THE RESIDENCES

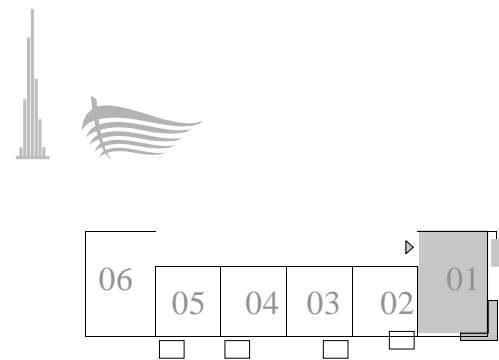
TOWER 2

## 2 BEDROOM TYPE B

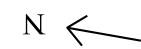
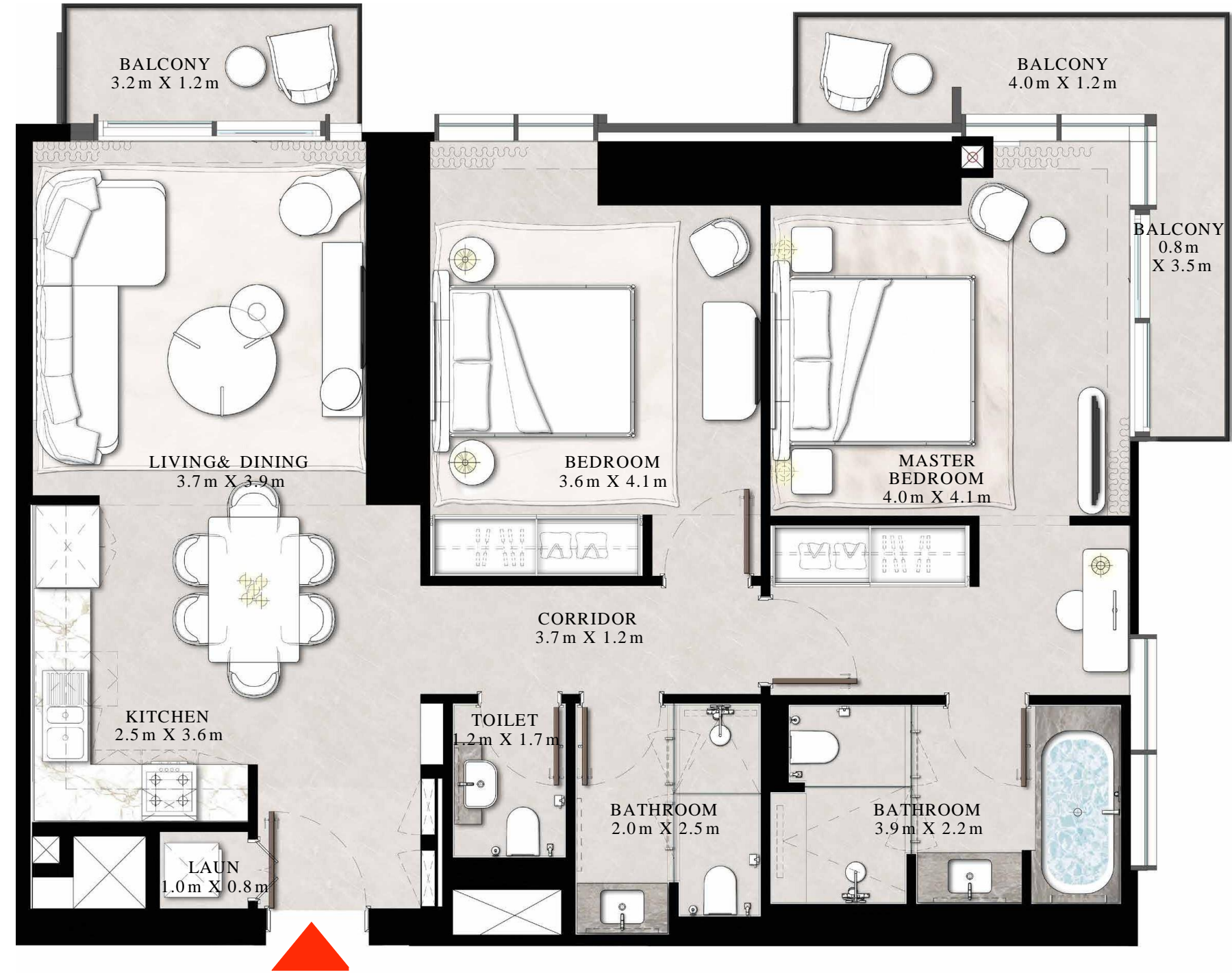
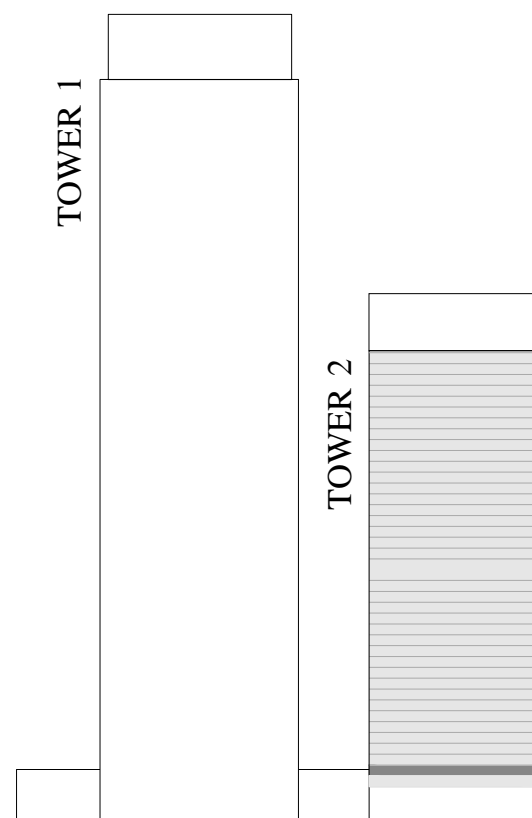
UNIT 01 | LEVEL PODIUM-3

SUITE AREA	1133.98 SQ.FT.	105.35 SQ.M.
BALCONY AREA	158.12 SQ.FT.	14.69 SQ.M.
TOTAL AREA	1292.10 SQ.FT.	120.04 SQ.M.

KEY PLAN LEVEL  
PODIUM-3



KEY SECTION



FLOOR PLAN 1. All dimensions are in imperial and metric, and measured from finish to finish excluding construction tolerances. 2. All materials, dimensions, and drawings are approximate only. 3. Information is subject to change without notice, at developer's absolute discretion. 4. Actual area may vary from the stated area. 5. Drawings not to scale. 6. All images used are for illustrative purposes only and do not represent the actual size, features, specifications, fittings, and furnishings. 7. The developer reserves the right to make revisions / alterations, at its absolute discretion, without any liability whatsoever. The St. Regis Residences, Downtown Dubai are not owned, developed or sold by Marriott International, Inc., or their affiliates ("Marriott"). Emaar Properties PJSC ("Emaar") uses The St. Regis marks under a license from Marriott, which has not confirmed the accuracy of any of the statements or representations made herein.

# ST REGIS

DOWNTOWN • DUBAI  
THE RESIDENCES

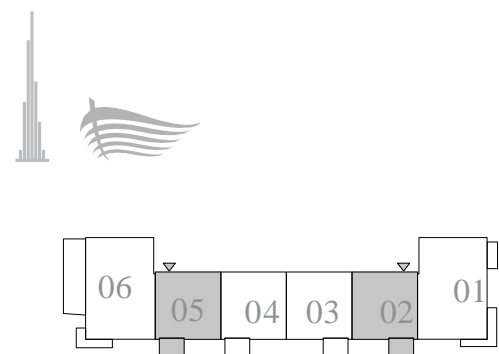
TOWER 2

## 1 BEDROOM TYPE A

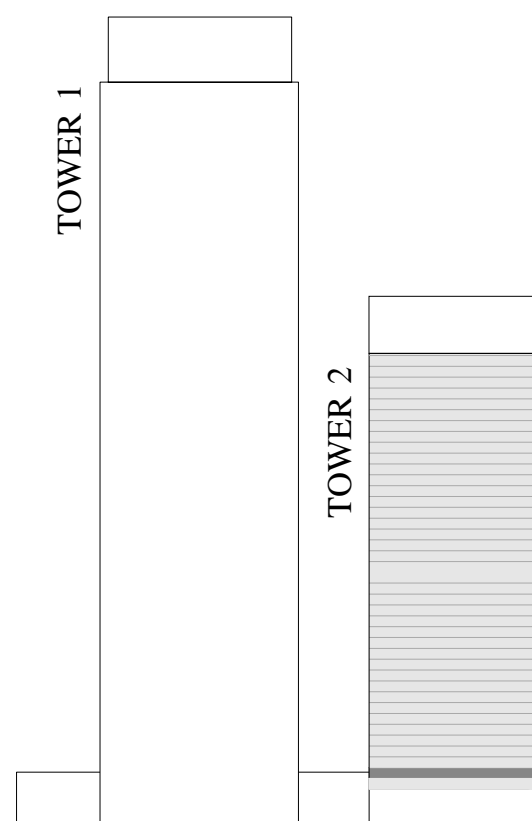
UNITS 02 & 05 | LEVEL PODIUM-3

SUITE AREA	720.97 SQ.FT.	66.98 SQ.M.
BALCONY AREA	71.15 SQ.FT.	6.61 SQ.M.
TOTAL AREA	792.12 SQ.FT.	73.59 SQ.M.

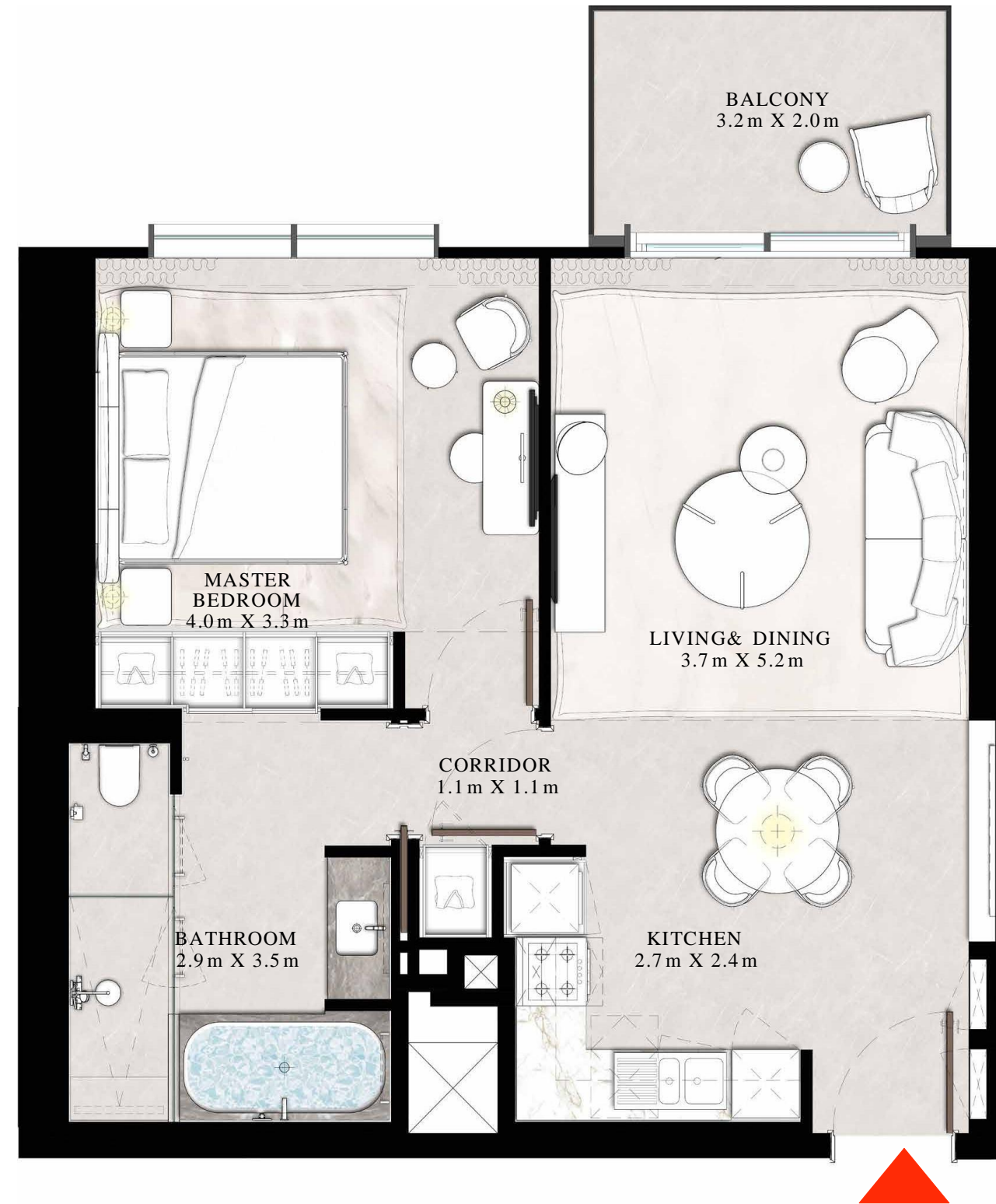
KEY PLAN LEVEL  
PODIUM-3



KEY SECTION



N ←



FLOOR PLAN 1. All dimensions are in imperial and metric, and measured from finish to finish excluding construction tolerances. 2. All materials, dimensions, and drawings are approximate only. 3. Information is subject to change without notice, at developer's absolute discretion. 4. Actual area may vary from the stated area. 5. Drawings not to scale. 6. All images used are for illustrative purposes only and do not represent the actual size, features, specifications, fittings, and furnishings. 7. The developer reserves the right to make revisions / alterations, at its absolute discretion, without any liability whatsoever. The St. Regis Residences, Downtown Dubai are not owned, developed or sold by Marriott International, Inc., or their affiliates ("Marriott"). Emaar Properties PJSC ("Emaar") uses The St. Regis marks under a license from Marriott, which has not confirmed the accuracy of any of the statements or representations made herein.

# ST REGIS

DOWNTOWN ♦ DUBAI  
THE RESIDENCES

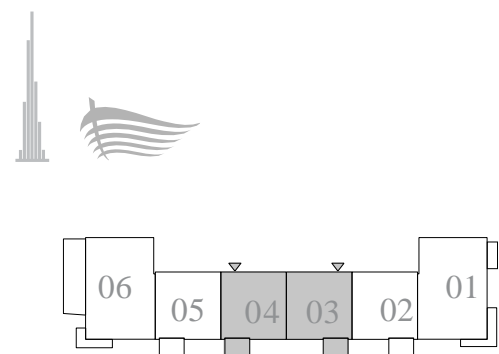
TOWER 2

## 1 BEDROOM TYPE A

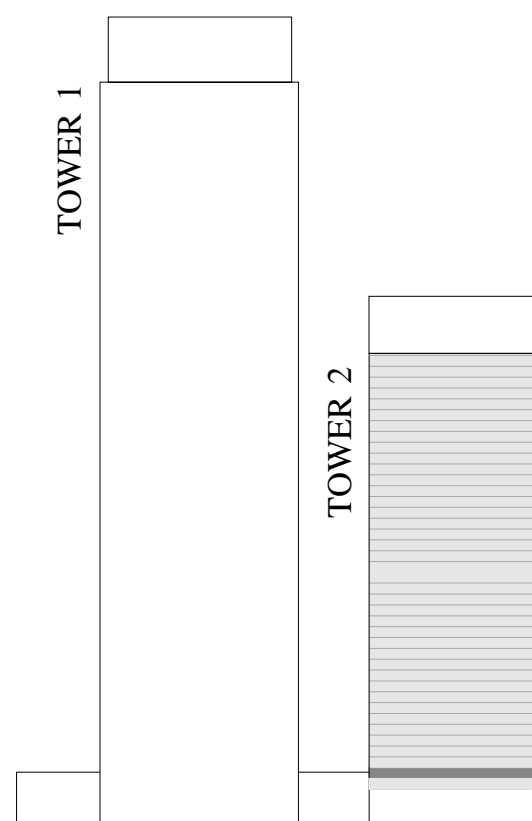
UNITS 03 & 04 | LEVEL PODIUM-3

SUITE AREA	720.00 SQ.FT.	66.89 SQ.M.
BALCONY AREA	71.15 SQ.FT.	6.61 SQ.M.
TOTAL AREA	791.15 SQ.FT.	73.50 SQ.M.

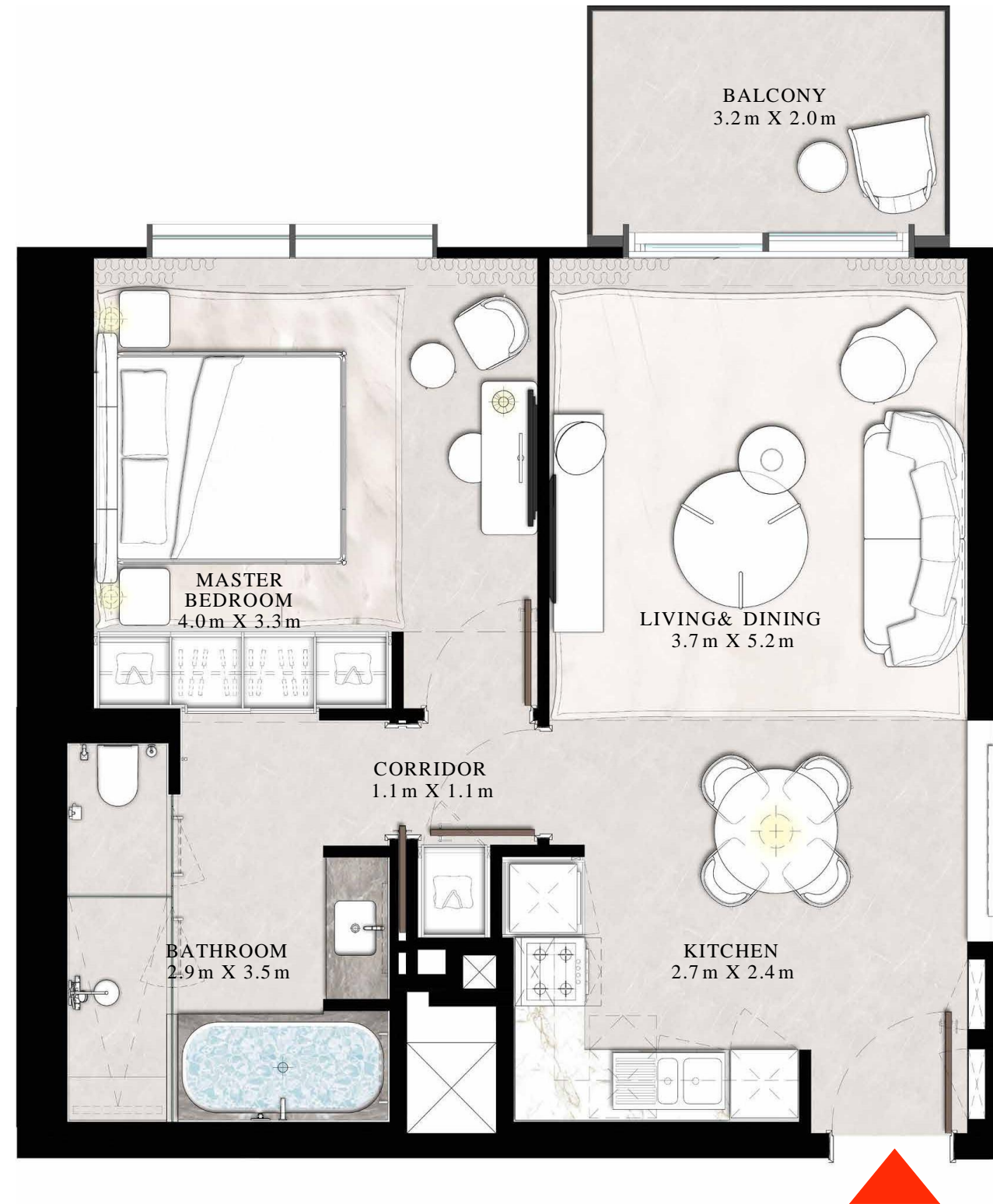
KEY PLAN LEVEL  
PODIUM-3



KEY SECTION



N ←



FLOOR PLAN 1. All dimensions are in imperial and metric, and measured from finish to finish excluding construction tolerances. 2. All materials, dimensions, and drawings are approximate only. 3. Information is subject to change without notice, at developer's absolute discretion. 4. Actual area may vary from the stated area. 5. Drawings not to scale. 6. All images used are for illustrative purposes only and do not represent the actual size, features, specifications, fittings, and furnishings. 7. The developer reserves the right to make revisions / alterations, at its absolute discretion, without any liability whatsoever. The St. Regis Residences, Downtown Dubai are not owned, developed or sold by Marriott International, Inc., or their affiliates ("Marriott"). Emaar Properties PJSC ("Emaar") uses The St. Regis marks under a license from Marriott, which has not confirmed the accuracy of any of the statements or representations made herein.

# ST REGIS

DOWNTOWN • DUBAI  
THE RESIDENCES

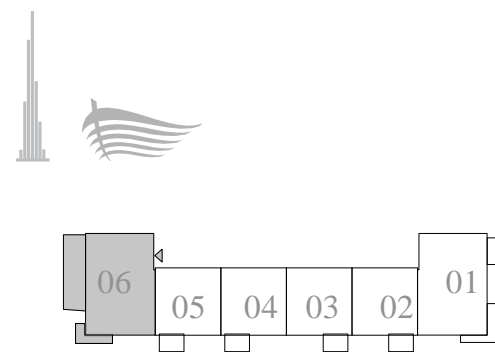
TOWER 2

## 2 BEDROOM TYPE B2

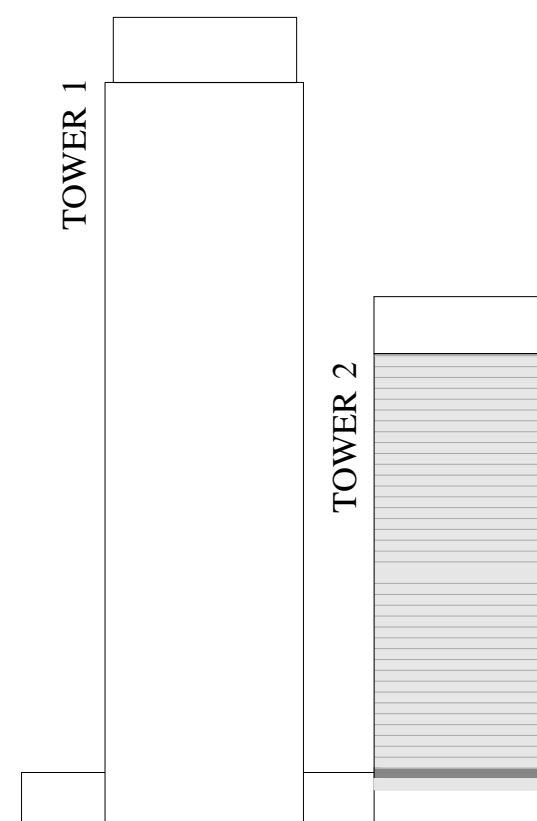
UNIT 06 | LEVEL PODIUM-3

SUITE AREA	1134.95 SQ.FT.	105.44 SQ.M.
BALCONY AREA	356.50 SQ.FT.	33.12 SQ.M.
TOTAL AREA	1491.45 SQ.FT.	138.56 SQ.M.

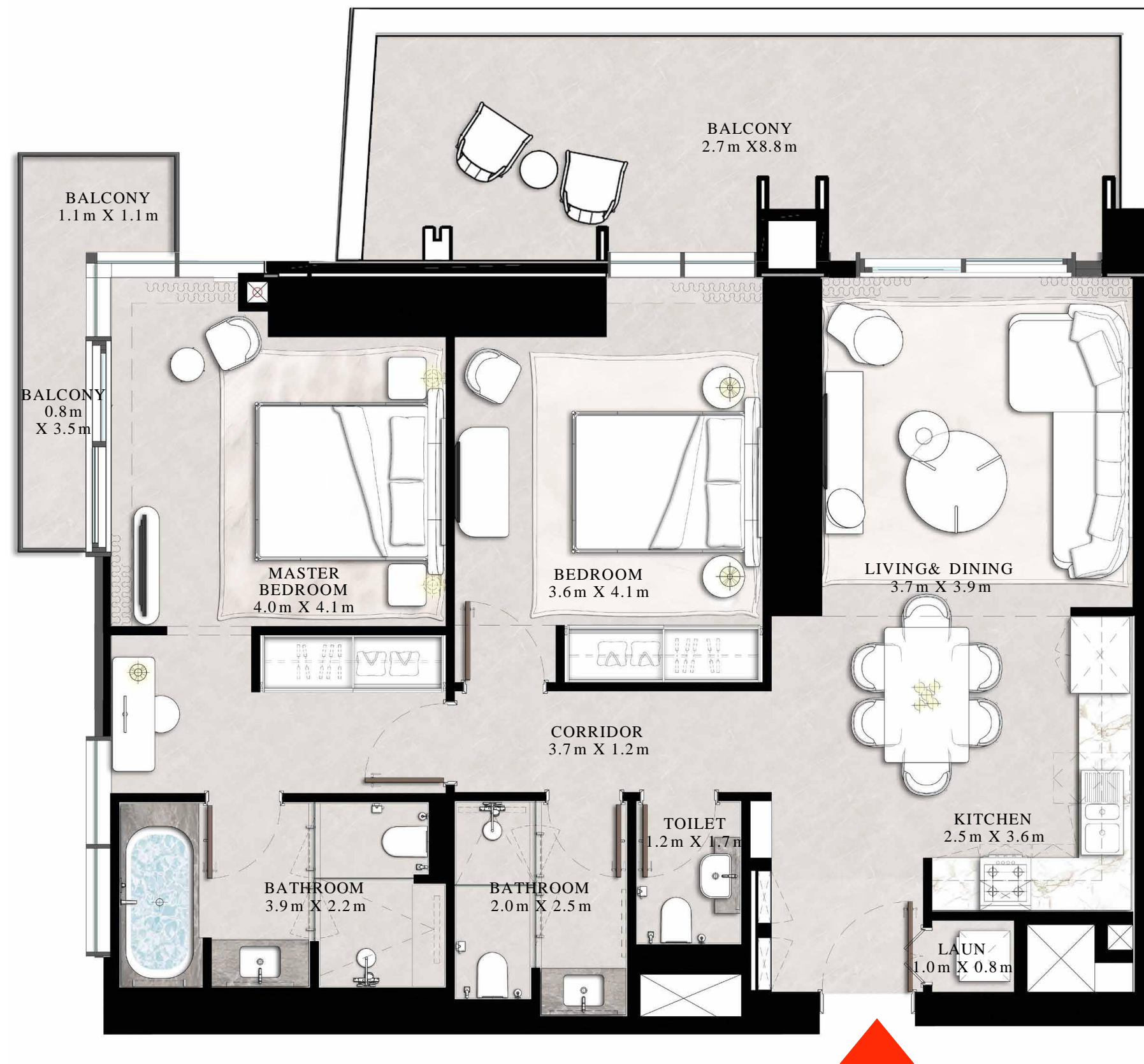
KEY PLAN LEVEL  
PODIUM-3



KEY SECTION



N ←



FLOOR PLAN 1. All dimensions are in imperial and metric, and measured from finish to finish excluding construction tolerances. 2. All materials, dimensions, and drawings are approximate only. 3. Information is subject to change without notice, at developer's absolute discretion. 4. Actual area may vary from the stated area. 5. Drawings not to scale. 6. All images used are for illustrative purposes only and do not represent the actual size, features, specifications, fittings, and furnishings. 7. The developer reserves the right to make revisions / alterations, at its absolute discretion, without any liability whatsoever. The St. Regis Residences, Downtown Dubai are not owned, developed or sold by Marriott International, Inc., or their affiliates ("Marriott"). Emaar Properties PJSC ("Emaar") uses The St. Regis marks under a license from Marriott, which has not confirmed the accuracy of any of the statements or representations made herein.

# ST REGIS

DOWNTOWN • DUBAI  
THE RESIDENCES

TOWER 2

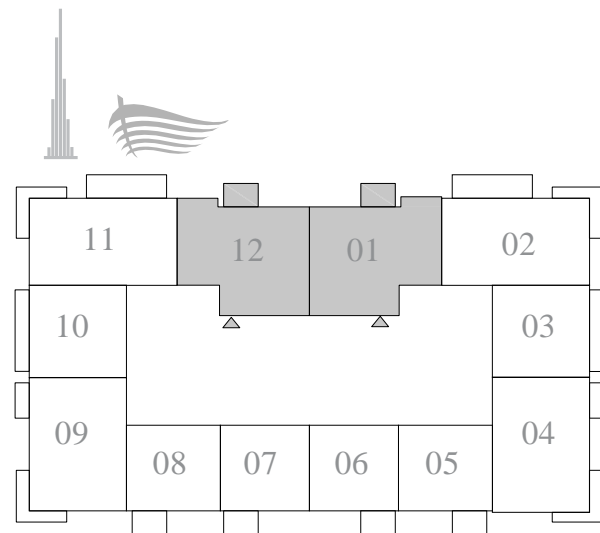
## 2 BEDROOM TYPE C

UNITS 01 & 12 | LEVEL 4-20

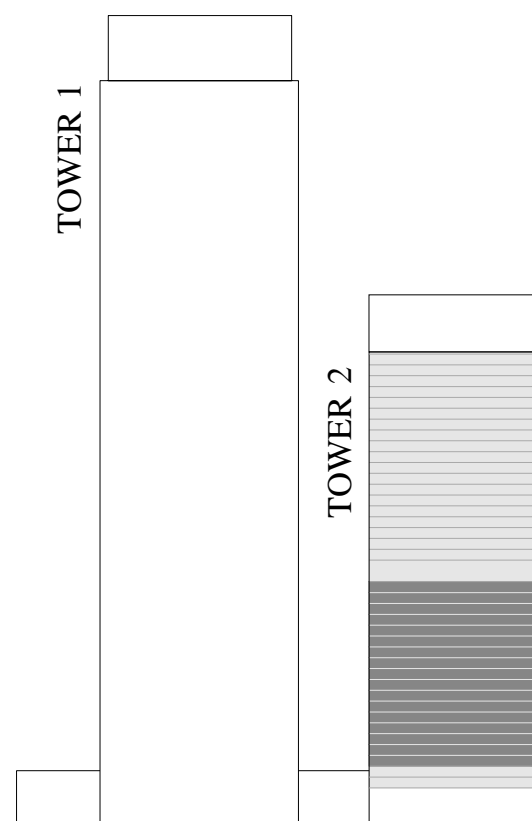
SUITE AREA	1214.92 SQ.FT.	112.87 SQ.M.
BALCONY AREA	71.15 SQ.FT.	6.61 SQ.M.
TOTAL AREA	1286.07 SQ.FT.	119.48 SQ.M.

KEY PLAN LEVEL

4-20



KEY SECTION



N ←

FLOOR PLAN 1. All dimensions are in imperial and metric, and measured from finish to finish excluding construction tolerances. 2. All materials, dimensions, and drawings are approximate only. 3. Information is subject to change without notice, at developer's absolute discretion. 4. Actual area may vary from the stated area. 5. Drawings not to scale. 6. All images used are for illustrative purposes only and do not represent the actual size, features, specifications, fittings, and furnishings. 7. The developer reserves the right to make revisions / alterations, at its absolute discretion, without any liability whatsoever. The St. Regis Residences, Downtown Dubai are not owned, developed or sold by Marriott International, Inc., or their affiliates ("Marriott"). Emaar Properties PJSC ("Emaar") uses The St. Regis marks under a license from Marriott, which has not confirmed the accuracy of any of the statements or representations made herein.

# ST REGIS

DOWNTOWN • DUBAI

## THE RESIDENCES

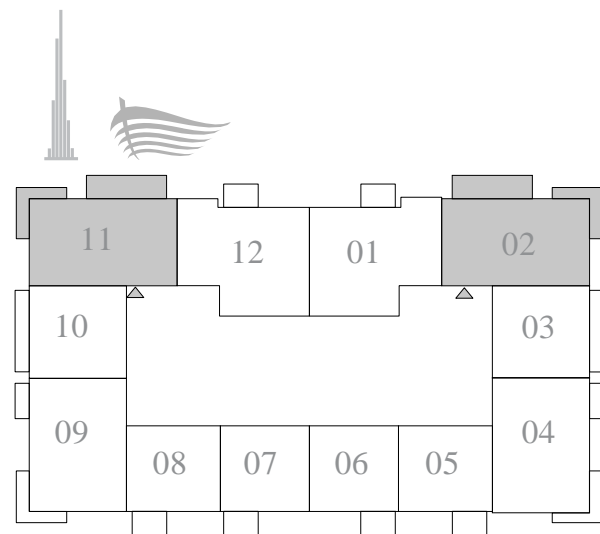
TOWER 2

### 2 BED ROOM TYPE A

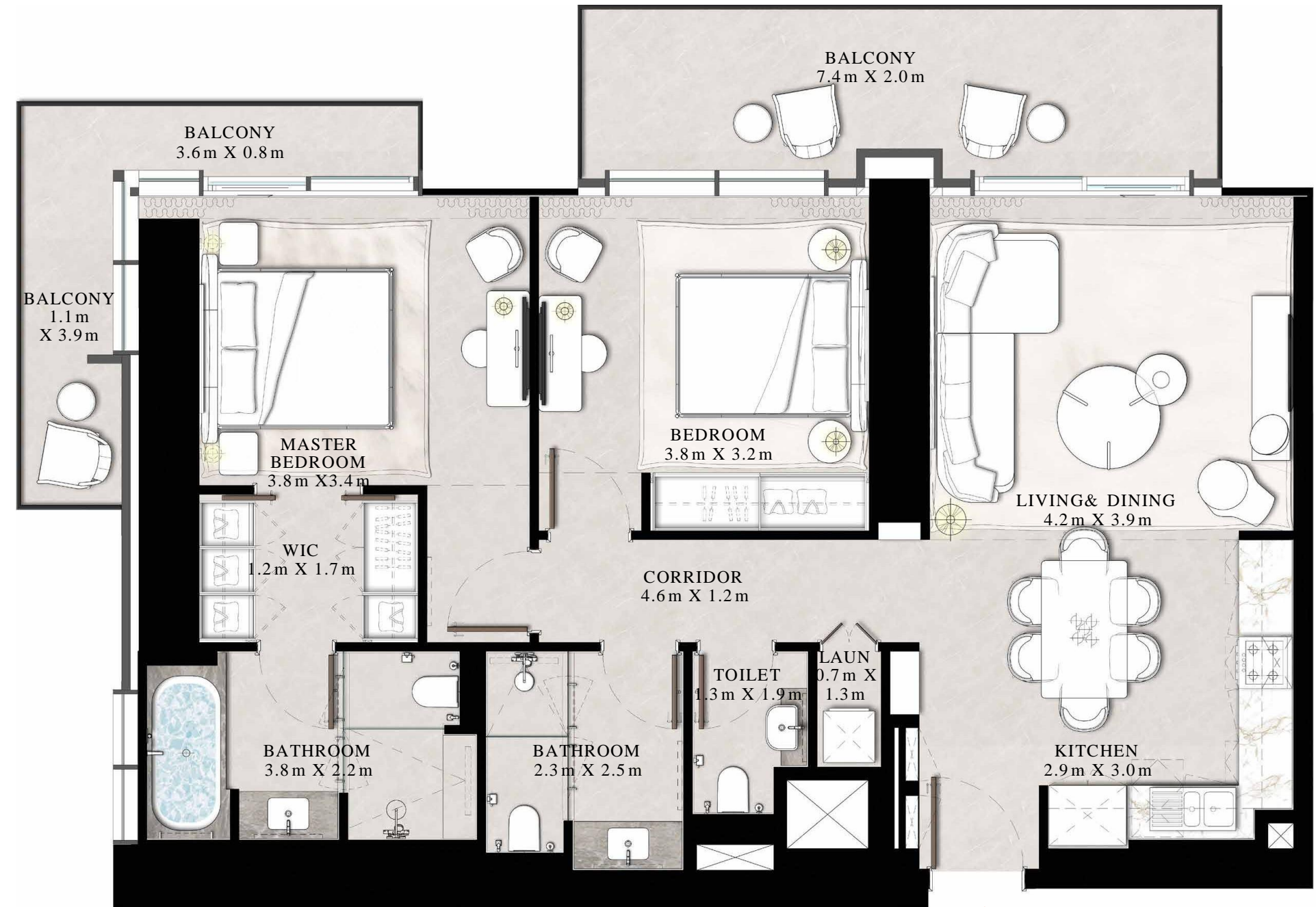
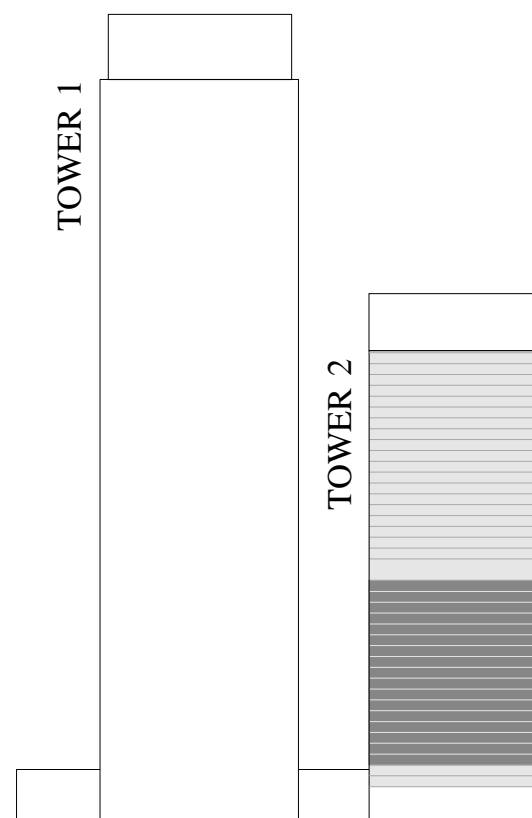
UNITS 02 & 11 | LEVEL 4-20

SUITE AREA	1141.84 SQ.FT.	106.08 SQ.M.
BALCONY AREA	268.02 SQ.FT.	24.90 SQ.M.
TOTAL AREA	1409.86 SQ.FT.	130.98 SQ.M.

KEY PLAN LEVEL  
4-20



KEY SECTION



FLOOR PLAN 1. All dimensions are in imperial and metric, and measured from finish to finish excluding construction tolerances. 2. All materials, dimensions, and drawings are approximate only. 3. Information is subject to change without notice, at developer's absolute discretion. 4. Actual area may vary from the stated area. 5. Drawings not to scale. 6. All images used are for illustrative purposes only and do not represent the actual size, features, specifications, fittings, and furnishings. 7. The developer reserves the right to make revisions / alterations, at it's absolute discretion, without any liability whatsoever. The St. Regis Residences, Downtown Dubai are not owned, developed or sold by Marriott International, Inc., or their affiliates ("Marriott"). Emaar Properties PJSC ("Emaar") uses The St. Regis marks under a license from Marriott, which has not confirmed the accuracy of any of the statements or representations made herein.

# ST REGIS

DOWNTOWN • DUBAI

## THE RESIDENCES

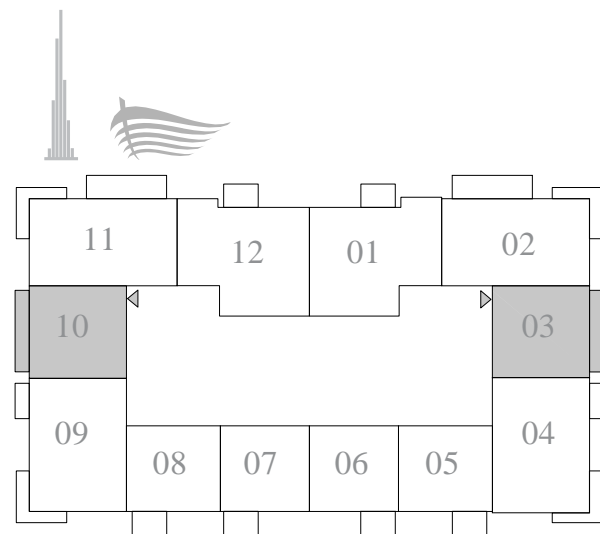
TOWER 2

### 1 BEDROOM TYPE B

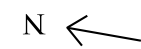
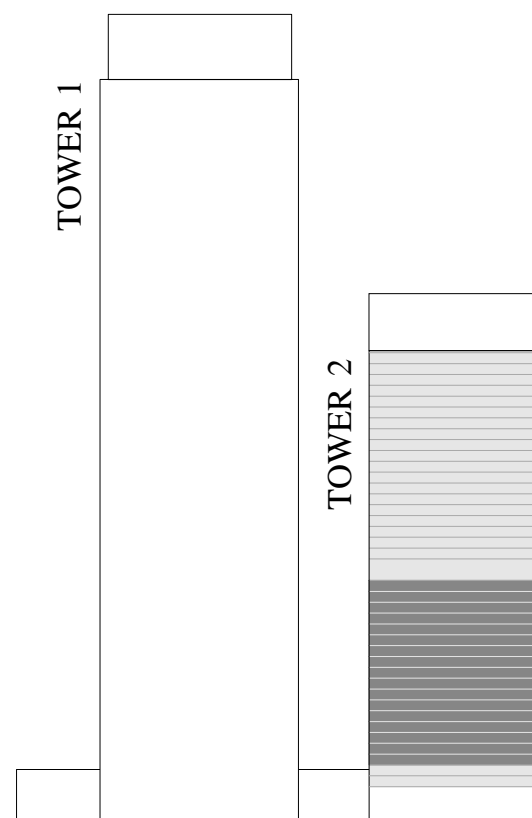
UNITS 03 & 10 | LEVEL 4-20

SUITE AREA	785.77 SQ.FT.	73.00 SQ.M.
BALCONY AREA	109.58 SQ.FT.	10.18 SQ.M.
TOTAL AREA	895.35 SQ.FT.	83.18 SQ.M.

KEY PLAN LEVEL  
4-20



KEY SECTION



FLOOR PLAN 1. All dimensions are in imperial and metric, and measured from finish to finish excluding construction tolerances. 2. All materials, dimensions, and drawings are approximate only. 3. Information is subject to change without notice, at developer's absolute discretion. 4. Actual area may vary from the stated area. 5. Drawings not to scale. 6. All images used are for illustrative purposes only and do not represent the actual size, features, specifications, fittings, and furnishings. 7. The developer reserves the right to make revisions / alterations, at its absolute discretion, without any liability whatsoever. The St. Regis Residences, Downtown Dubai are not owned, developed or sold by Marriott International, Inc., or their affiliates ("Marriott"). Emaar Properties PJSC ("Emaar") uses The St. Regis marks under a license from Marriott, which has not confirmed the accuracy of any of the statements or representations made herein.

# ST REGIS

DOWNTOWN • DUBAI

## THE RESIDENCES

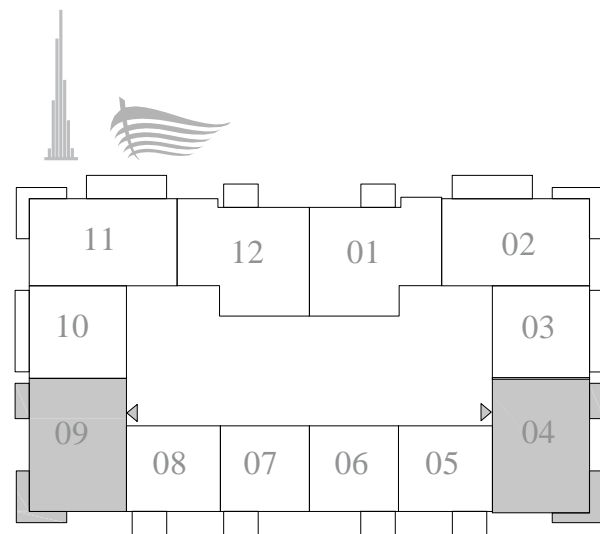
TOWER 2

### 2 BEDROOM TYPE B

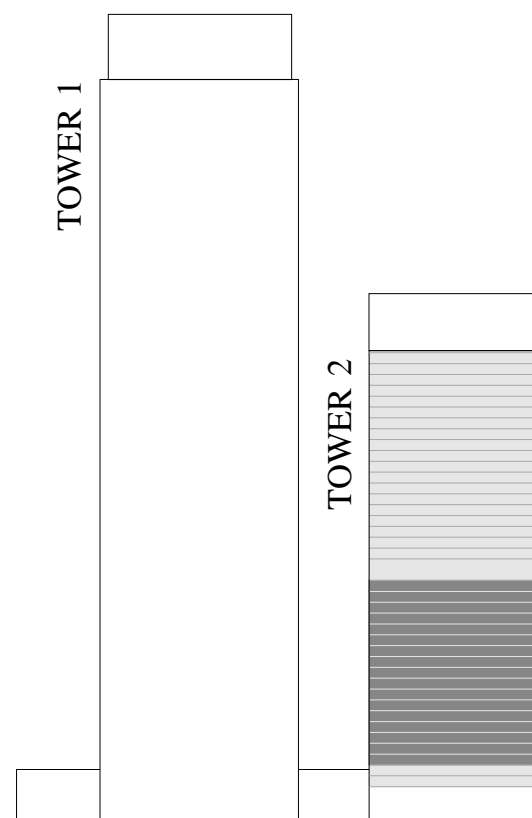
UNITS 04 & 09 | LEVEL 4-20

SUITE AREA	1134.41 SQ.FT.	105.39 SQ.M.
BALCONY AREA	154.35 SQ.FT.	14.34 SQ.M.
TOTAL AREA	1288.76 SQ.FT.	119.73 SQ.M.

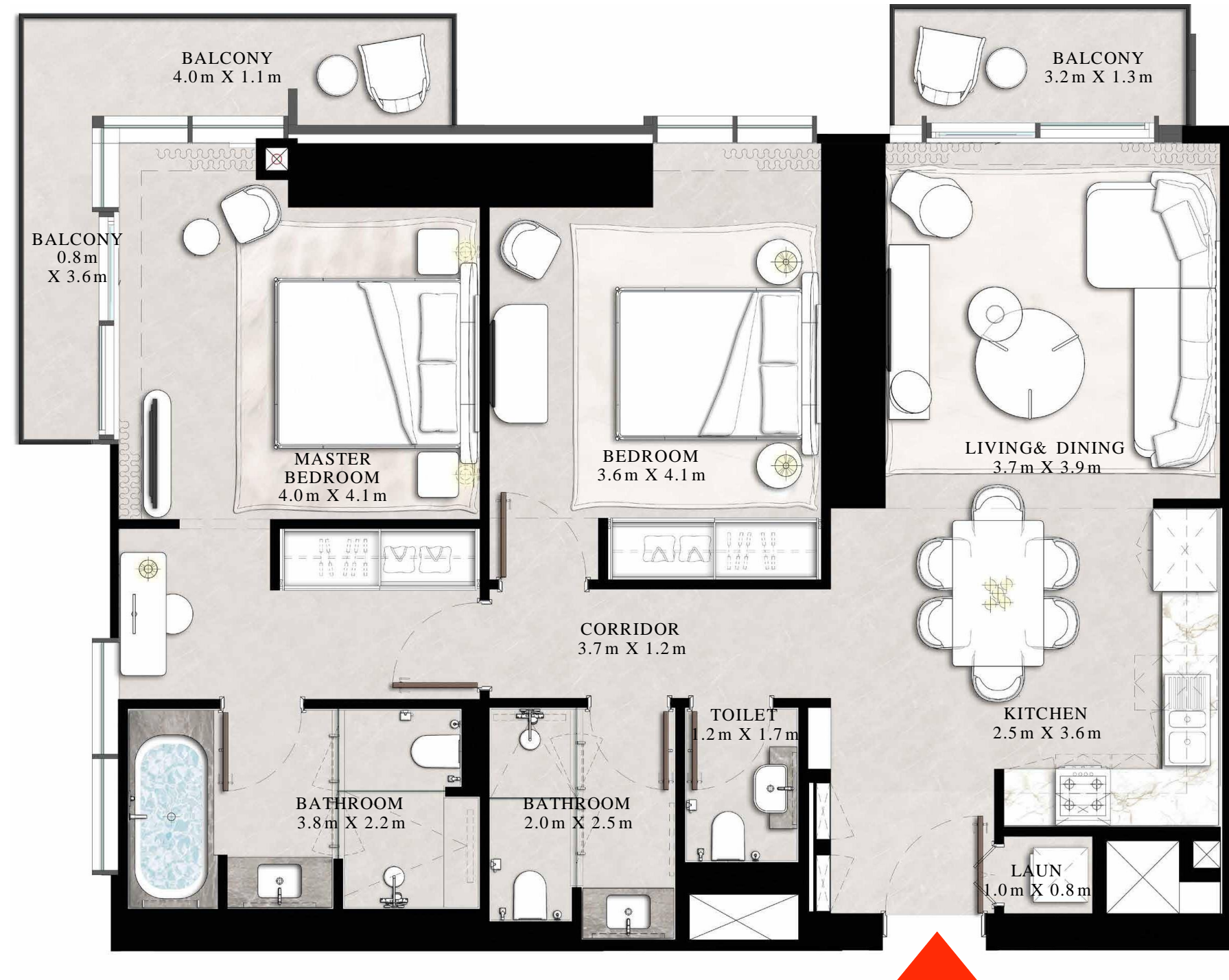
KEY PLAN LEVEL  
4-20



KEY SECTION



N ←



FLOOR PLAN 1. All dimensions are in imperial and metric, and measured from finish to finish excluding construction tolerances. 2. All materials, dimensions, and drawings are approximate only. 3. Information is subject to change without notice, at developer's absolute discretion. 4. Actual area may vary from the stated area. 5. Drawings not to scale. 6. All images used are for illustrative purposes only and do not represent the actual size, features, specifications, fittings, and furnishings. 7. The developer reserves the right to make revisions / alterations, at its absolute discretion, without any liability whatsoever. The St. Regis Residences, Downtown Dubai are not owned, developed or sold by Marriott International, Inc., or their affiliates ("Marriott"). Emaar Properties PJSC ("Emaar") uses The St. Regis marks under a license from Marriott, which has not confirmed the accuracy of any of the statements or representations made herein.

# ST REGIS

DOWNTOWN ♦ DUBAI  
THE RESIDENCES

TOWER 2

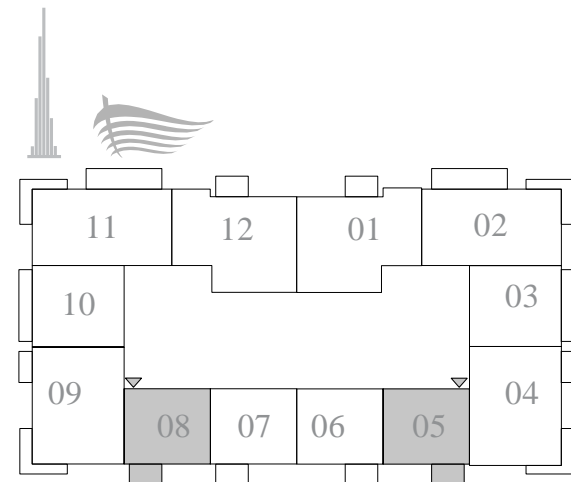
## 1 BEDROOM TYPE A

UNITS 05 & 08 | LEVEL 4-20

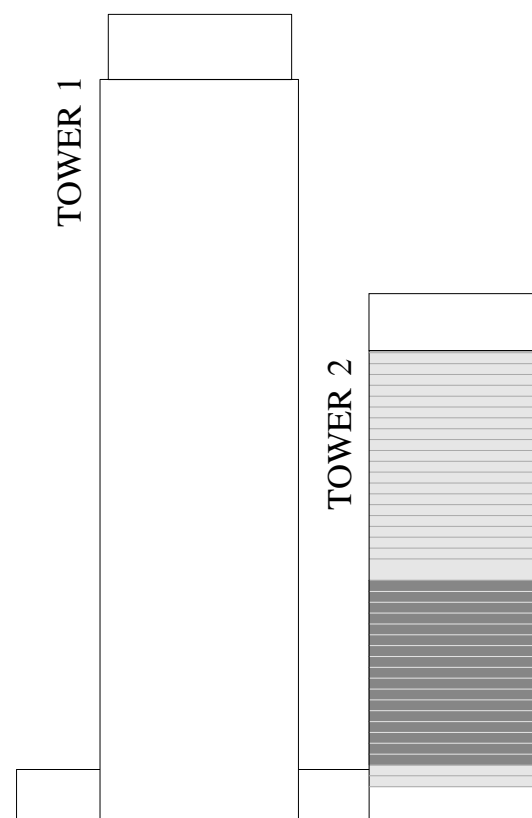
SUITE AREA	720.97 SQ.FT.	66.98 SQ.M.
BALCONY AREA	71.15 SQ.FT.	6.61 SQ.M.
TOTAL AREA	792.12 SQ.FT.	73.59 SQ.M.

KEY PLAN LEVEL

4-20



KEY SECTION



N ←

FLOOR PLAN 1. All dimensions are in imperial and metric, and measured from finish to finish excluding construction tolerances. 2. All materials, dimensions, and drawings are approximate only. 3. Information is subject to change without notice, at developer's absolute discretion. 4. Actual area may vary from the stated area. 5. Drawings not to scale. 6. All images used are for illustrative purposes only and do not represent the actual size, features, specifications, fittings, and furnishings. 7. The developer reserves the right to make revisions / alterations, at its absolute discretion, without any liability whatsoever. The St. Regis Residences, Downtown Dubai are not owned, developed or sold by Marriott International, Inc., or their affiliates ("Marriott"). Emaar Properties PJSC ("Emaar") uses The St. Regis marks under a license from Marriott, which has not confirmed the accuracy of any of the statements or representations made herein.

# ST REGIS

DOWNTOWN ♦ DUBAI  
THE RESIDENCES

TOWER 2

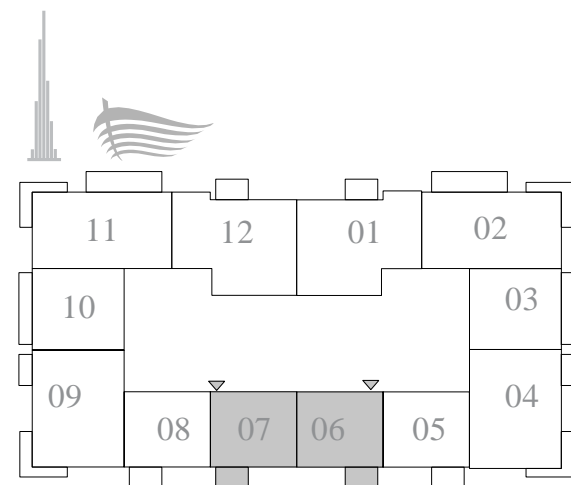
## 1 BEDROOM TYPE A

UNITS 06 & 07 | LEVEL 4-20

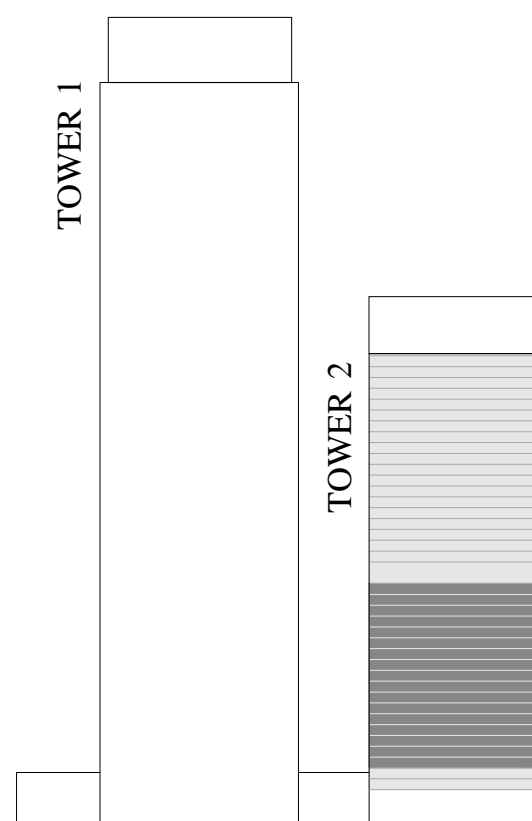
SUITE AREA	720.00 SQ.FT.	66.89 SQ.M.
BALCONY AREA	71.15 SQ.FT.	6.61 SQ.M.
TOTAL AREA	791.15 SQ.FT.	73.50 SQ.M.

KEY PLAN LEVEL

4-20



KEY SECTION



FLOOR PLAN 1. All dimensions are in imperial and metric, and measured from finish to finish excluding construction tolerances. 2. All materials, dimensions, and drawings are approximate only. 3. Information is subject to change without notice, at developer's absolute discretion. 4. Actual area may vary from the stated area. 5. Drawings not to scale. 6. All images used are for illustrative purposes only and do not represent the actual size, features, specifications, fittings, and furnishings. 7. The developer reserves the right to make revisions / alterations, at its absolute discretion, without any liability whatsoever. The St. Regis Residences, Downtown Dubai are not owned, developed or sold by Marriott International, Inc., or their affiliates ("Marriott"). Emaar Properties PJSC ("Emaar") uses The St. Regis marks under a license from Marriott, which has not confirmed the accuracy of any of the statements or representations made herein.

# ST REGIS

DOWNTOWN • DUBAI  
THE RESIDENCES

TOWER 2

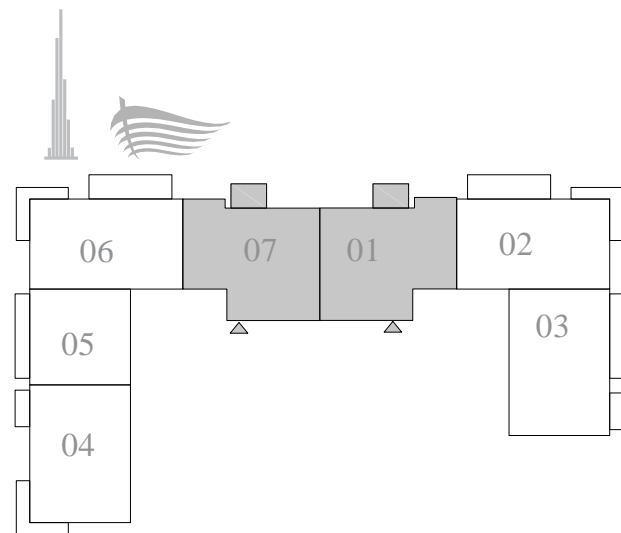
## 2 BEDROOM TYPE C

UNITS 01 & 07 | LEVEL 21

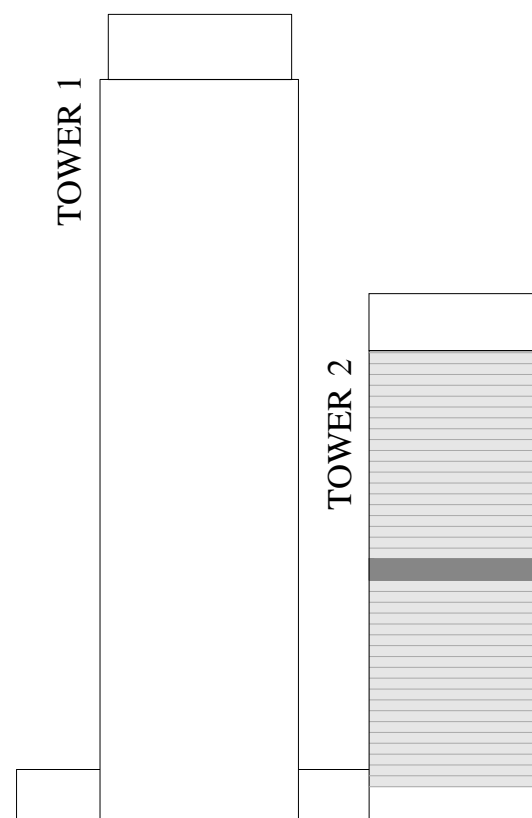
SUITE AREA	1214.81 SQ.FT.	112.86 SQ.M.
BALCONY AREA	71.26 SQ.FT.	6.62 SQ.M.
TOTAL AREA	1286.07 SQ.FT.	119.48 SQ.M.

KEY PLAN LEVEL

21



KEY SECTION



FLOOR PLAN 1. All dimensions are in imperial and metric, and measured from finish to finish excluding construction tolerances. 2. All materials, dimensions, and drawings are approximate only. 3. Information is subject to change without notice, at developer's absolute discretion. 4. Actual area may vary from the stated area. 5. Drawings not to scale. 6. All images used are for illustrative purposes only and do not represent the actual size, features, specifications, fittings, and furnishings. 7. The developer reserves the right to make revisions / alterations, at its absolute discretion, without any liability whatsoever. The St. Regis Residences, Downtown Dubai are not owned, developed or sold by Marriott International, Inc., or their affiliates ("Marriott"). Emaar Properties PJSC ("Emaar") uses The St. Regis marks under a license from Marriott, which has not confirmed the accuracy of any of the statements or representations made herein.

# ST REGIS

DOWNTOWN • DUBAI  
THE RESIDENCES

TOWER 2

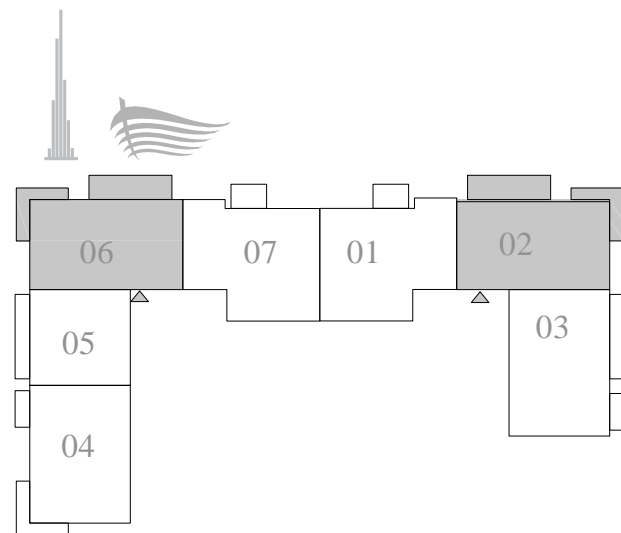
## 2 BEDROOM TYPE A

UNITS 02 & 06 | LEVEL 21

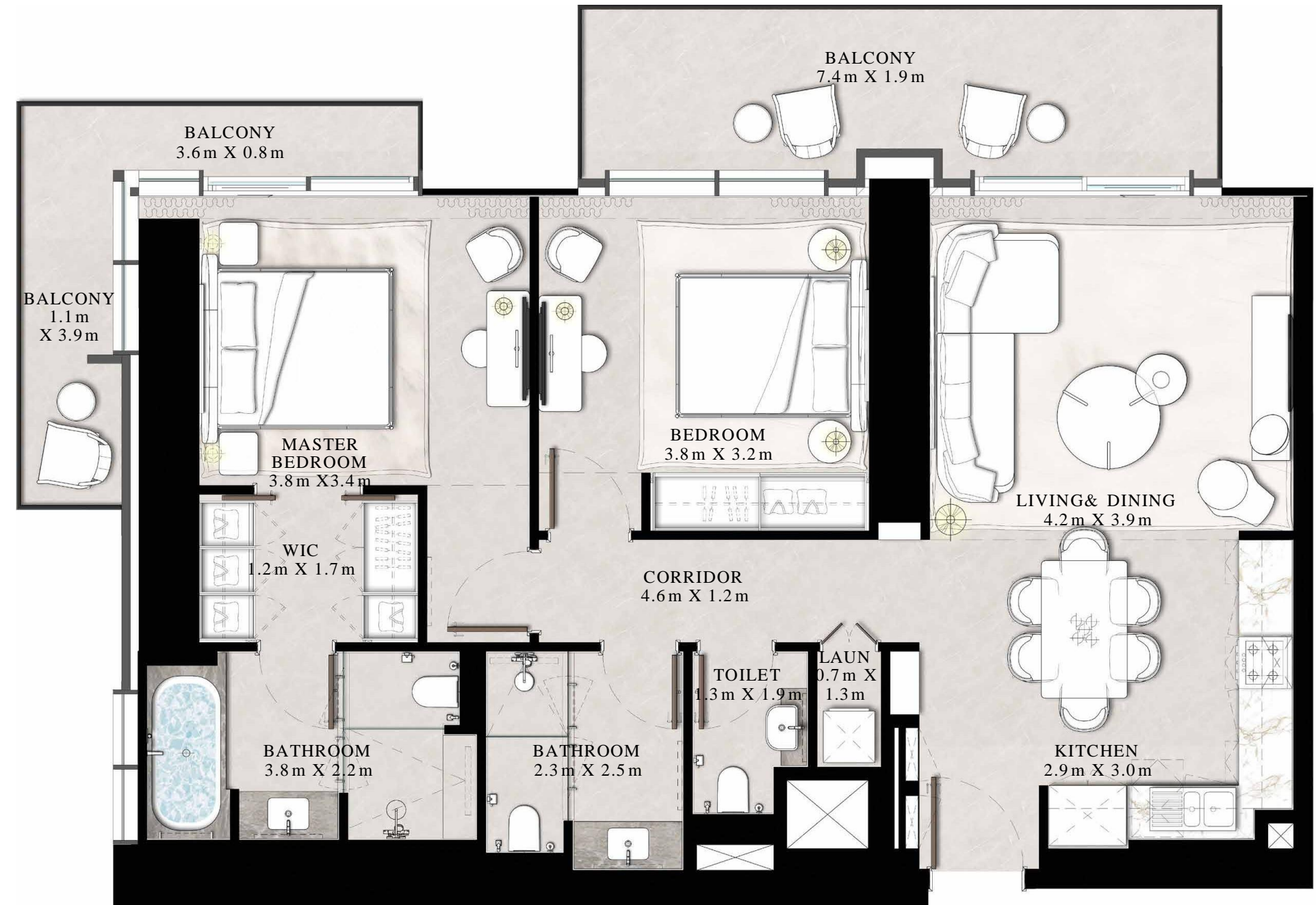
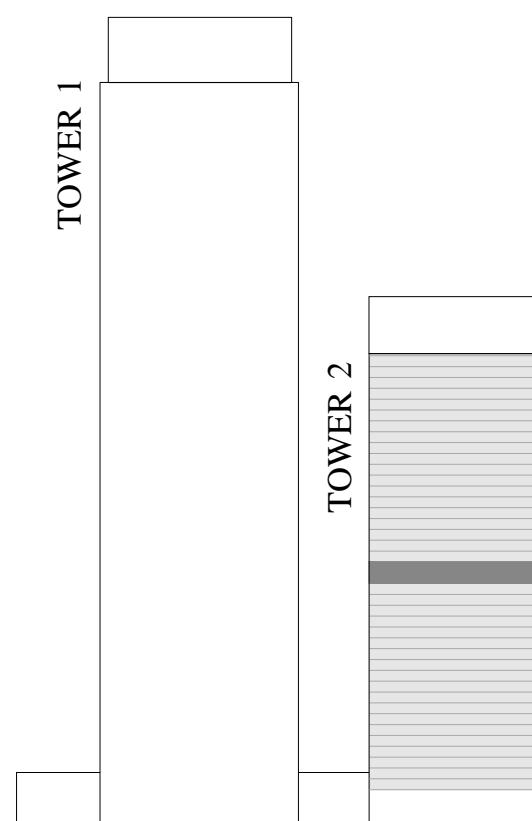
SUITE AREA	1141.73 SQ.FT.	106.07 SQ.M.
BALCONY AREA	268.13 SQ.FT.	24.91 SQ.M.
TOTAL AREA	1409.86 SQ.FT.	130.98 SQ.M.

KEY PLAN LEVEL

21



KEY SECTION



FLOOR PLAN 1. All dimensions are in imperial and metric, and measured from finish to finish excluding construction tolerances. 2. All materials, dimensions, and drawings are approximate only. 3. Information is subject to change without notice, at developer's absolute discretion. 4. Actual area may vary from the stated area. 5. Drawings not to scale. 6. All images used are for illustrative purposes only and do not represent the actual size, features, specifications, fittings, and furnishings. 7. The developer reserves the right to make revisions / alterations, at it's absolute discretion, without any liability whatsoever. The St. Regis Residences, Downtown Dubai are not owned, developed or sold by Marriott International, Inc., or their affiliates ("Marriott"). Emaar Properties PJSC ("Emaar") uses The St. Regis marks under a license from Marriott, which has not confirmed the accuracy of any of the statements or representations made herein.

# ST REGIS

DOWNTOWN • DUBAI

## THE RESIDENCES

TOWER 2

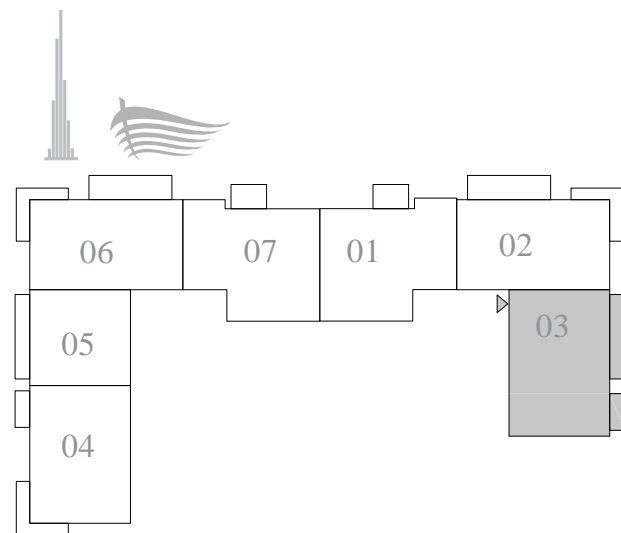
### 2 BEDROOM TYPE E

UNIT 03 | LEVEL 21

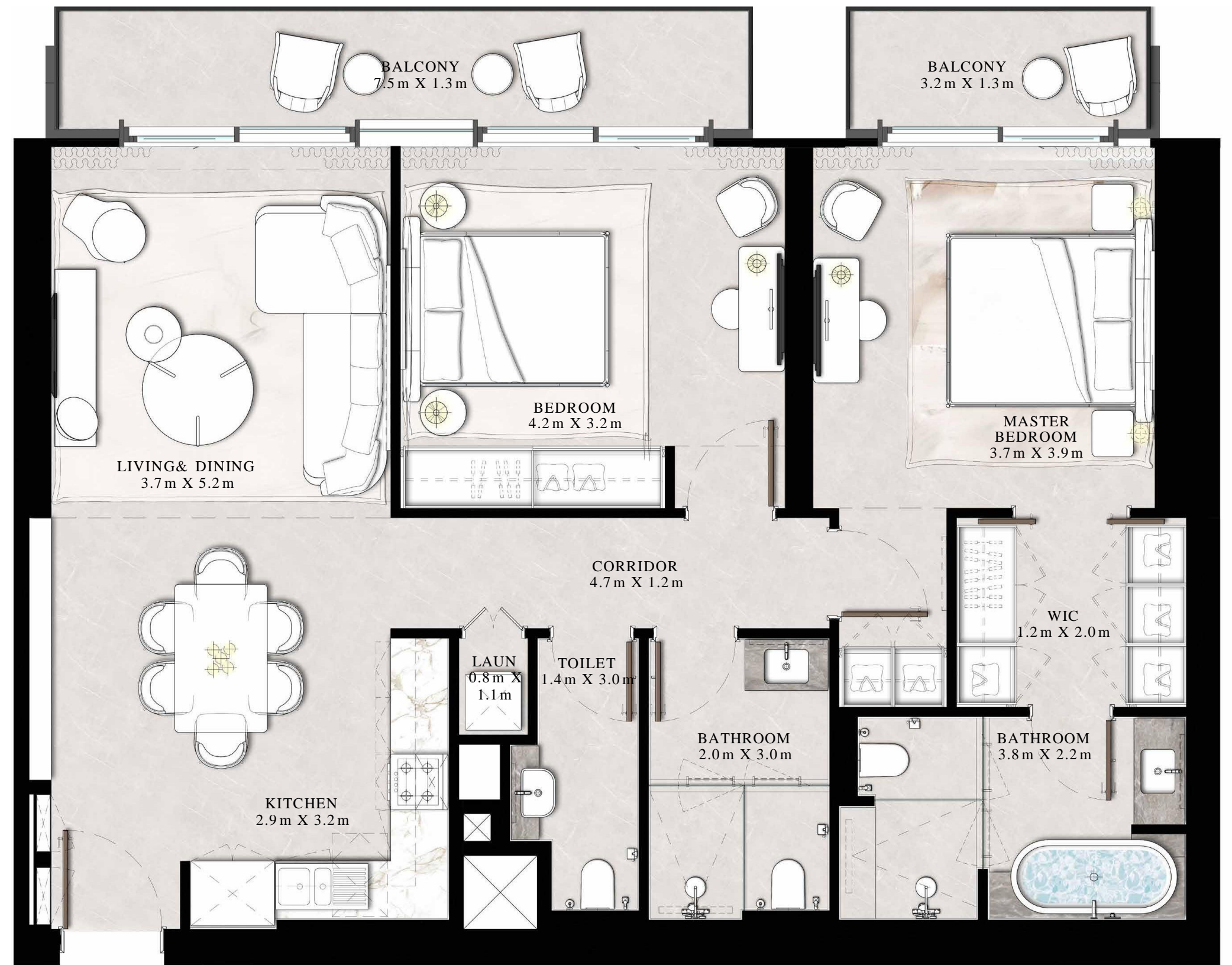
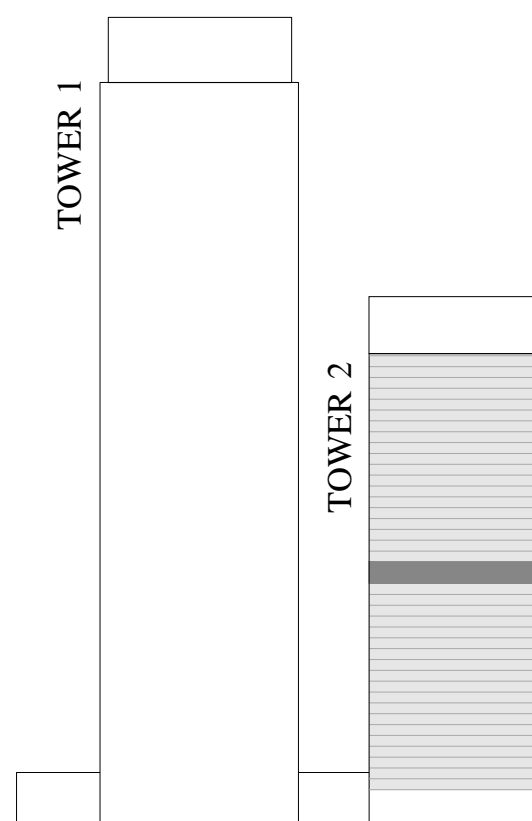
SUITE AREA	1185.11 SQ.FT.	110.10 SQ.M.
BALCONY AREA	157.37 SQ.FT.	14.62 SQ.M.
TOTAL AREA	1342.48 SQ.FT.	124.72 SQ.M.

KEY PLAN LEVEL

21



KEY SECTION



N ←

FLOOR PLAN 1. All dimensions are in imperial and metric, and measured from finish to finish excluding construction tolerances. 2. All materials, dimensions, and drawings are approximate only. 3. Information is subject to change without notice, at developer's absolute discretion. 4. Actual area may vary from the stated area. 5. Drawings not to scale. 6. All images used are for illustrative purposes only and do not represent the actual size, features, specifications, fittings, and furnishings. 7. The developer reserves the right to make revisions / alterations, at its absolute discretion, without any liability whatsoever. The St. Regis Residences, Downtown Dubai are not owned, developed or sold by Marriott International, Inc., or their affiliates ("Marriott"). Emaar Properties PJSC ("Emaar") uses The St. Regis marks under a license from Marriott, which has not confirmed the accuracy of any of the statements or representations made herein.

# ST REGIS

DOWNTOWN • DUBAI

## THE RESIDENCES

TOWER 2

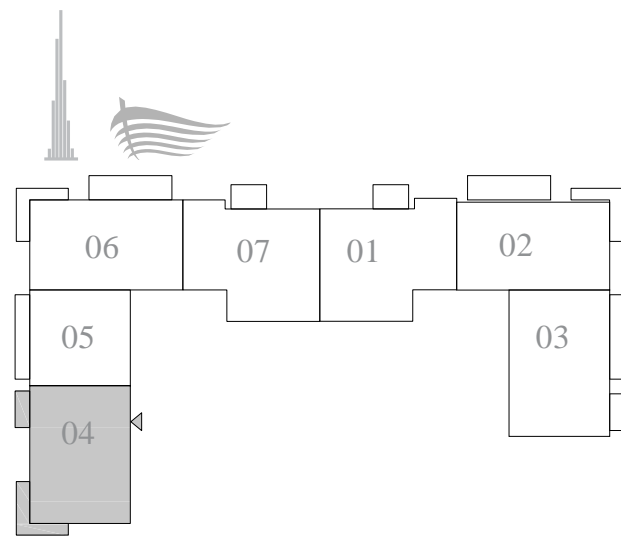
### 2 BEDROOM TYPE B

UNIT 04 | LEVEL 21

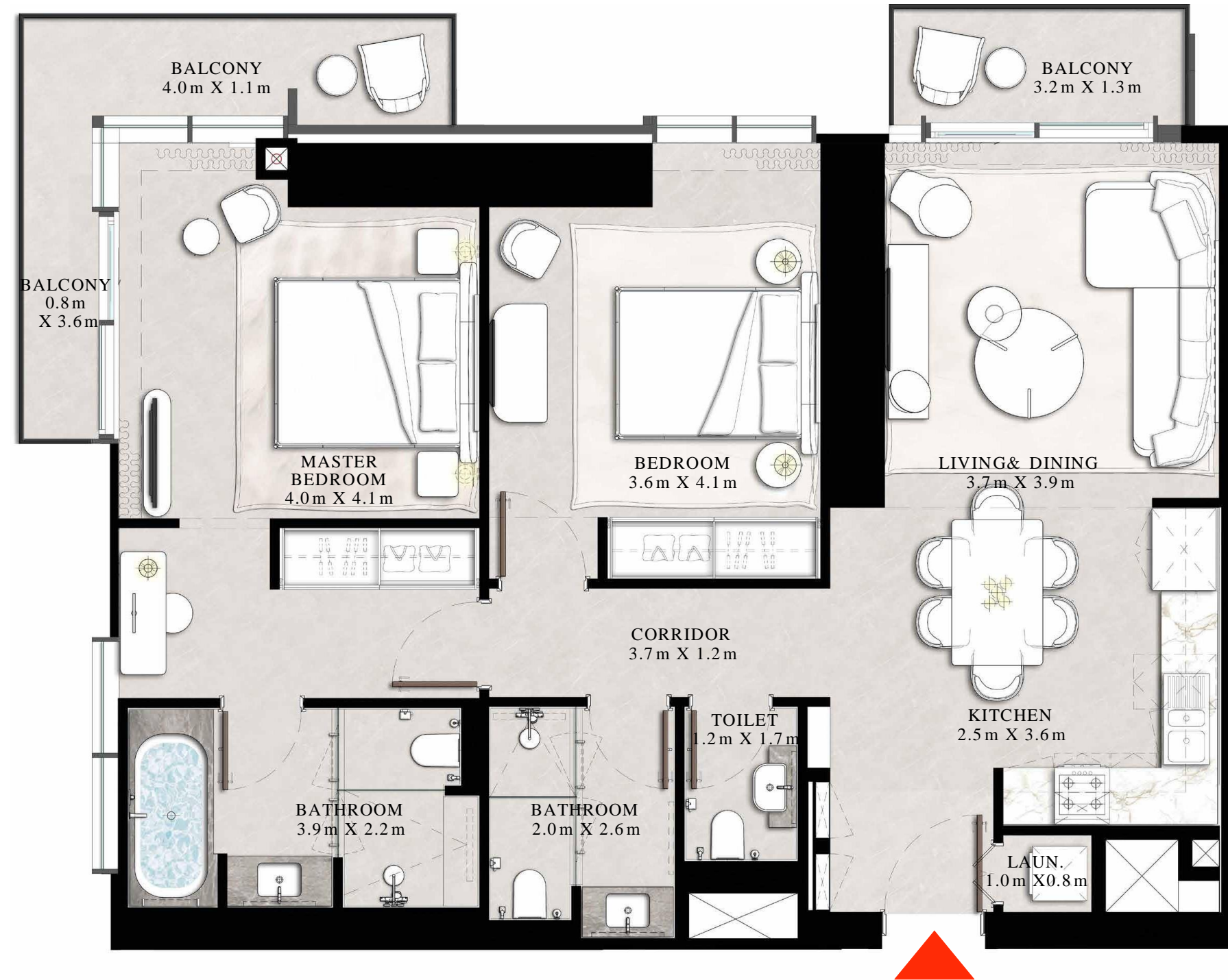
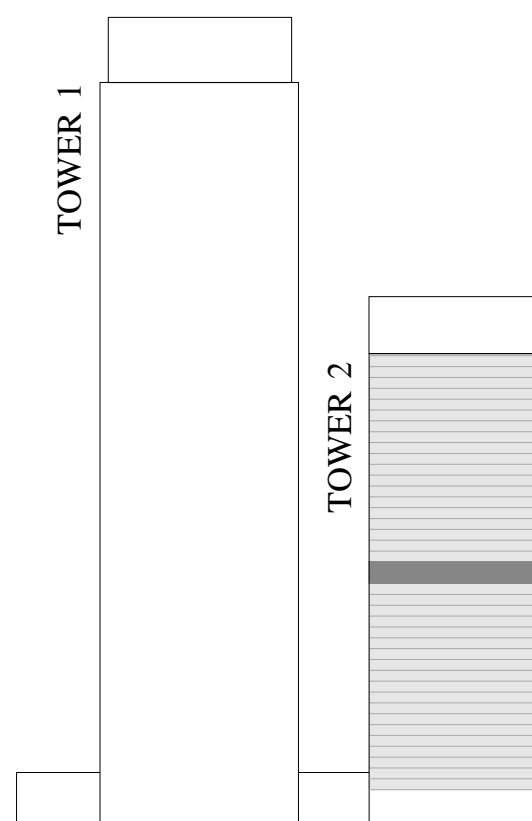
SUITE AREA	1132.15 SQ.FT.	105.18 SQ.M.
BALCONY AREA	154.35 SQ.FT.	14.34 SQ.M.
TOTAL AREA	1286.50 SQ.FT.	119.52 SQ.M.

KEY PLAN LEVEL

21



KEY SECTION



FLOOR PLAN 1. All dimensions are in imperial and metric, and measured from finish to finish excluding construction tolerances. 2. All materials, dimensions, and drawings are approximate only. 3. Information is subject to change without notice, at developer's absolute discretion. 4. Actual area may vary from the stated area. 5. Drawings not to scale. 6. All images used are for illustrative purposes only and do not represent the actual size, features, specifications, fittings, and furnishings. 7. The developer reserves the right to make revisions / alterations, at its absolute discretion, without any liability whatsoever. The St. Regis Residences, Downtown Dubai are not owned, developed or sold by Marriott International, Inc., or their affiliates ("Marriott"). Emaar Properties PJSC ("Emaar") uses The St. Regis marks under a license from Marriott, which has not confirmed the accuracy of any of the statements or representations made herein.

# ST REGIS

DOWNTOWN • DUBAI

## THE RESIDENCES

TOWER 2

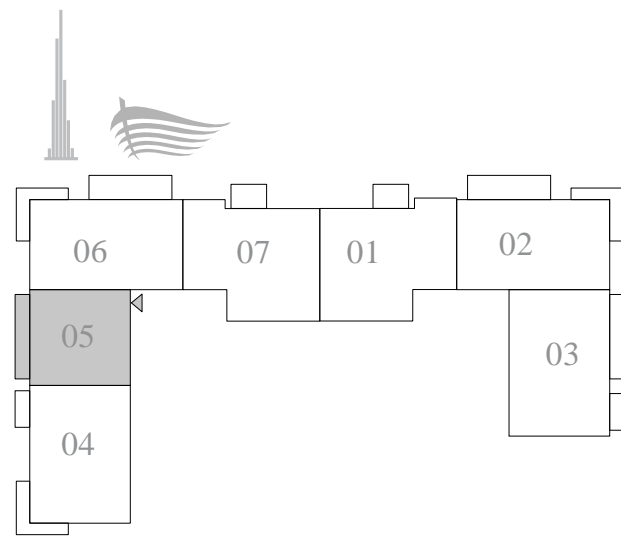
### 1 BEDROOM TYPE B

UNIT 05 | LEVEL 21

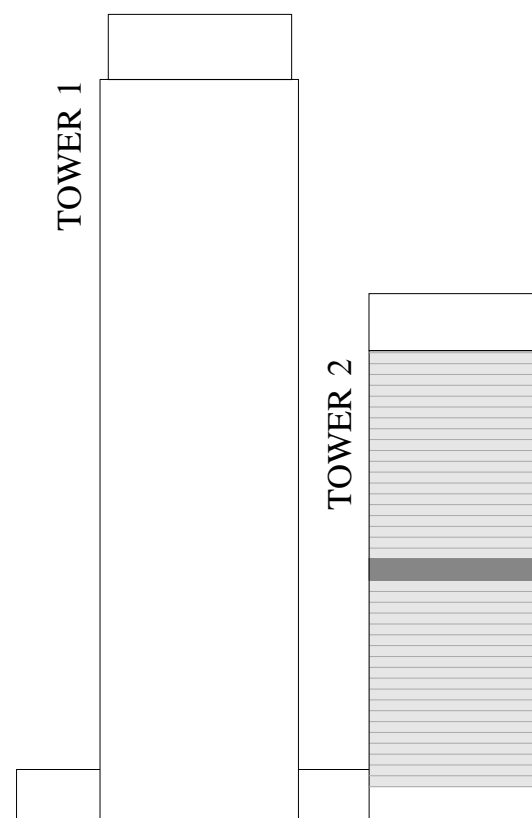
SUITE AREA	785.77 SQ.FT.	73.00 SQ.M.
BALCONY AREA	109.58 SQ.FT.	10.18 SQ.M.
TOTAL AREA	895.35 SQ.FT.	83.18 SQ.M.

KEY PLAN LEVEL

21



KEY SECTION



FLOOR PLAN 1. All dimensions are in imperial and metric, and measured from finish to finish excluding construction tolerances. 2. All materials, dimensions, and drawings are approximate only. 3. Information is subject to change without notice, at developer's absolute discretion. 4. Actual area may vary from the stated area. 5. Drawings not to scale. 6. All images used are for illustrative purposes only and do not represent the actual size, features, specifications, fittings, and furnishings. 7. The developer reserves the right to make revisions / alterations, at its absolute discretion, without any liability whatsoever. The St. Regis Residences, Downtown Dubai are not owned, developed or sold by Marriott International, Inc., or their affiliates ("Marriott"). Emaar Properties PJSC ("Emaar") uses The St. Regis marks under a license from Marriott, which has not confirmed the accuracy of any of the statements or representations made herein.

# ST REGIS

DOWNTOWN • DUBAI  
THE RESIDENCES

TOWER 2

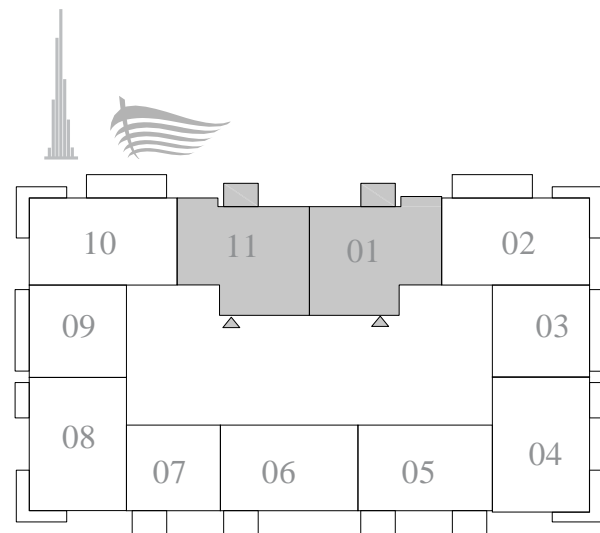
## 2 BEDROOM TYPE C

UNITS 01 & 11 | LEVEL 22

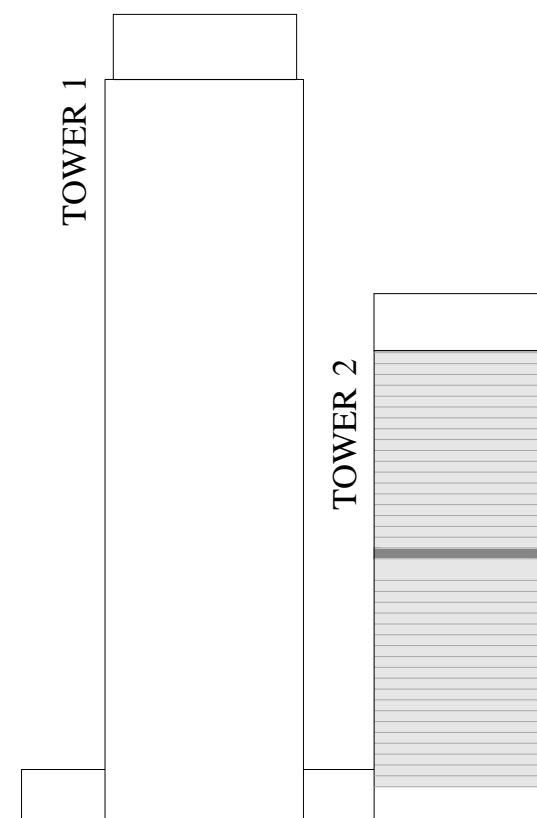
SUITE AREA	1214.92 SQ.FT.	112.87 SQ.M.
BALCONY AREA	71.15 SQ.FT.	6.61 SQ.M.
TOTAL AREA	1286.07 SQ.FT.	119.48 SQ.M.

KEY PLAN LEVEL

22



KEY SECTION



FLOOR PLAN 1. All dimensions are in imperial and metric, and measured from finish to finish excluding construction tolerances. 2. All materials, dimensions, and drawings are approximate only. 3. Information is subject to change without notice, at developer's absolute discretion. 4. Actual area may vary from the stated area. 5. Drawings not to scale. 6. All images used are for illustrative purposes only and do not represent the actual size, features, specifications, fittings, and furnishings. 7. The developer reserves the right to make revisions / alterations, at its absolute discretion, without any liability whatsoever. The St. Regis Residences, Downtown Dubai are not owned, developed or sold by Marriott International, Inc., or their affiliates ("Marriott"). Emaar Properties PJSC ("Emaar") uses The St. Regis marks under a license from Marriott, which has not confirmed the accuracy of any of the statements or representations made herein.

# ST REGIS

DOWNTOWN • DUBAI

## THE RESIDENCES

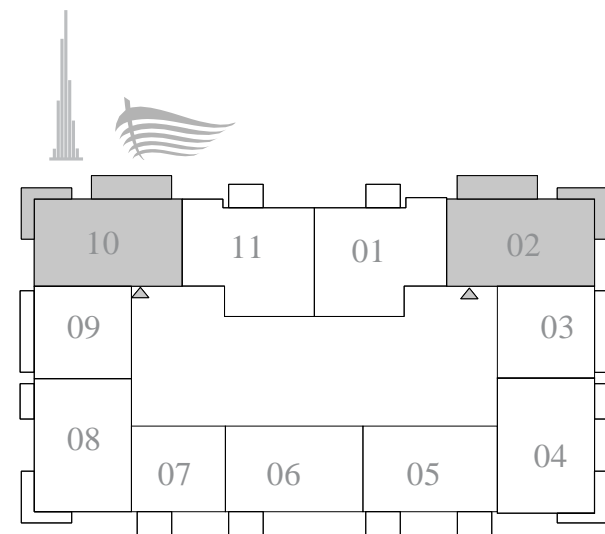
TOWER 2

### 2 BEDROOM TYPE A

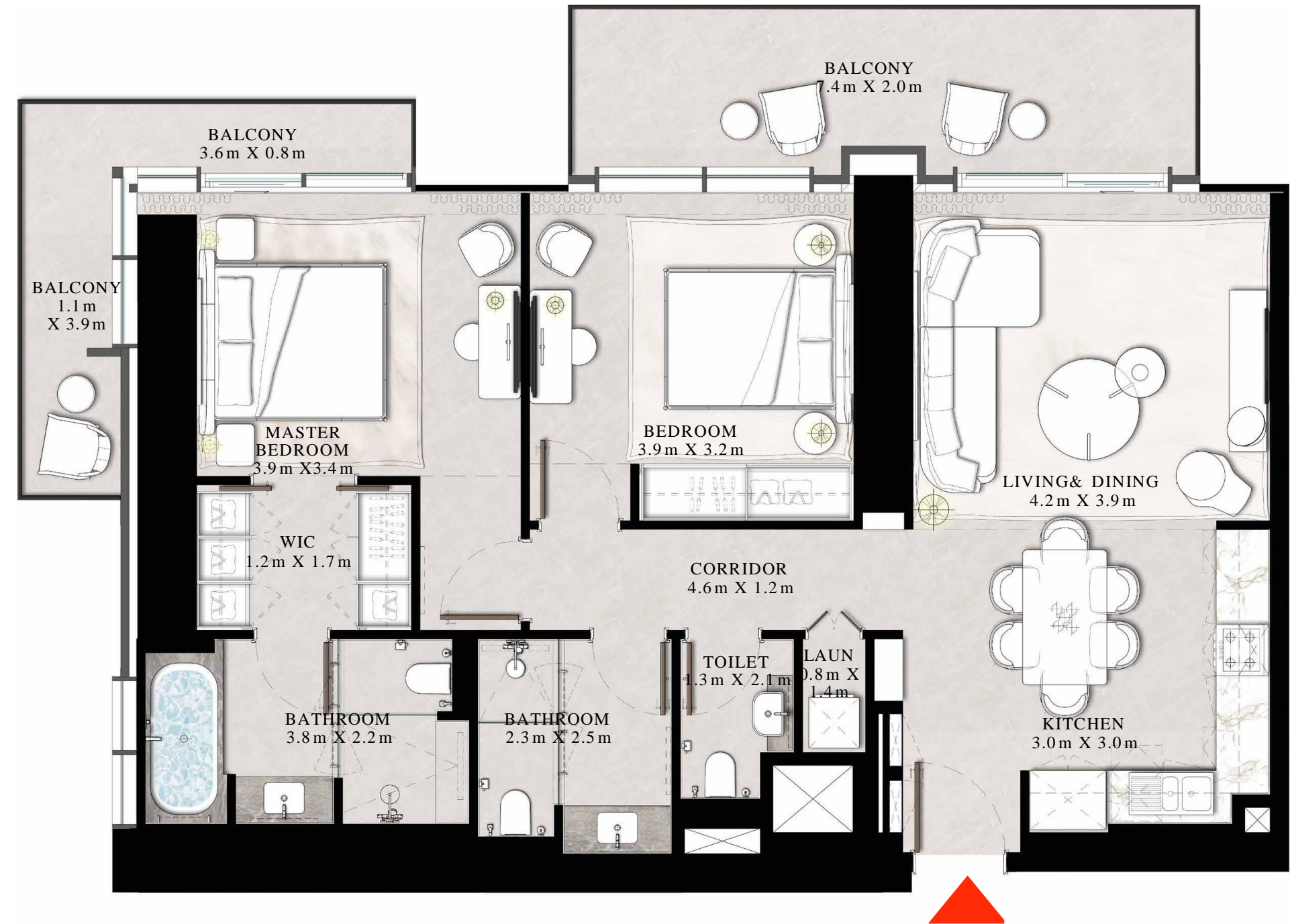
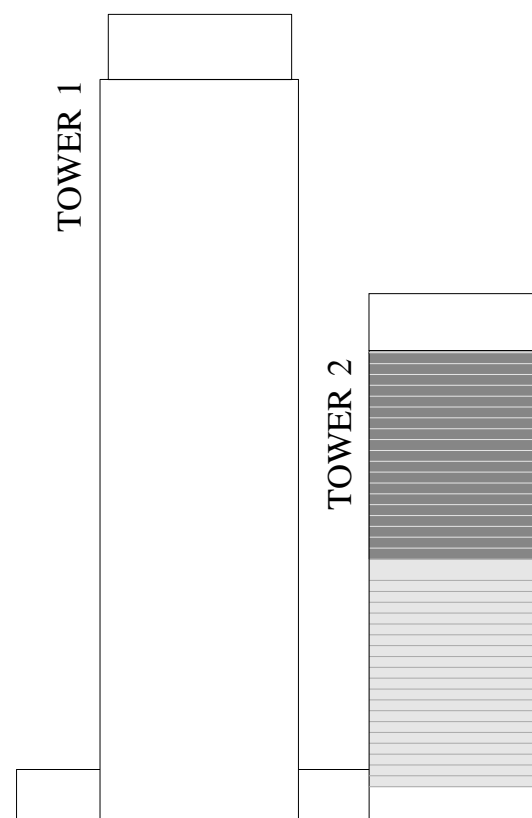
UNITS 02 & 10 | LEVEL 22-40

SUITE AREA	1141.84 SQ.FT.	106.08 SQ.M.
BALCONY AREA	268.02 SQ.FT.	24.90 SQ.M.
TOTAL AREA	1409.86 SQ.FT.	130.98 SQ.M.

KEY PLAN LEVEL  
22-40



KEY SECTION



FLOOR PLAN 1. All dimensions are in imperial and metric, and measured from finish to finish excluding construction tolerances. 2. All materials, dimensions, and drawings are approximate only. 3. Information is subject to change without notice, at developer's absolute discretion. 4. Actual area may vary from the stated area. 5. Drawings not to scale. 6. All images used are for illustrative purposes only and do not represent the actual size, features, specifications, fittings, and furnishings. 7. The developer reserves the right to make revisions / alterations, at its absolute discretion, without any liability whatsoever. The St. Regis Residences, Downtown Dubai are not owned, developed or sold by Marriott International, Inc., or their affiliates ("Marriott"). Emaar Properties PJSC ("Emaar") uses The St. Regis marks under a license from Marriott, which has not confirmed the accuracy of any of the statements or representations made herein.

# ST REGIS

DOWNTOWN • DUBAI

## THE RESIDENCES

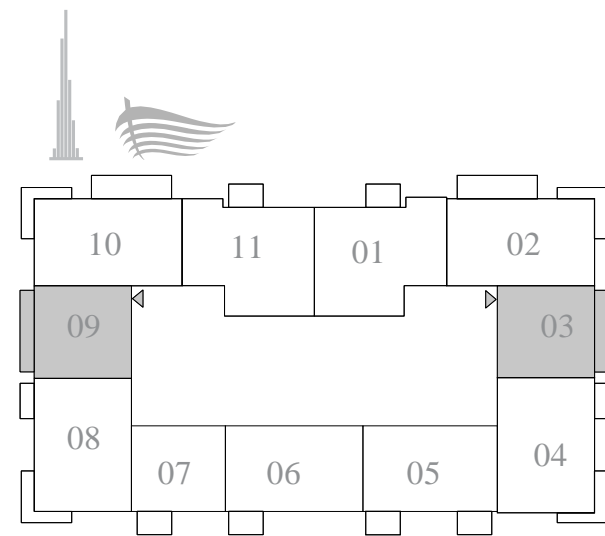
TOWER 2

### 1 BEDROOM TYPE B

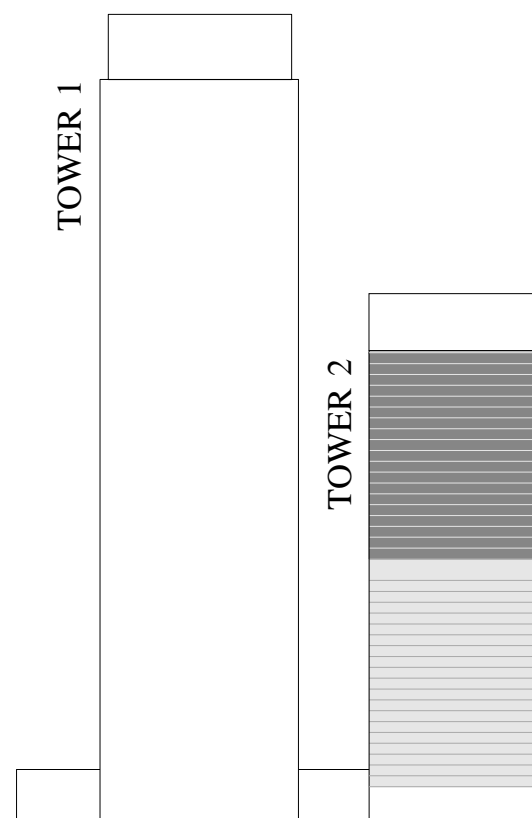
UNITS 03 & 09 | LEVEL 22-40

SUITE AREA	785.77 SQ.FT.	73.00 SQ.M.
BALCONY AREA	109.58 SQ.FT.	10.18 SQ.M.
TOTAL AREA	895.35 SQ.FT.	83.18 SQ.M.

KEY PLAN LEVEL  
22-40



KEY SECTION



FLOOR PLAN 1. All dimensions are in imperial and metric, and measured from finish to finish excluding construction tolerances. 2. All materials, dimensions, and drawings are approximate only. 3. Information is subject to change without notice, at developer's absolute discretion. 4. Actual area may vary from the stated area. 5. Drawings not to scale. 6. All images used are for illustrative purposes only and do not represent the actual size, features, specifications, fittings, and furnishings. 7. The developer reserves the right to make revisions / alterations, at its absolute discretion, without any liability whatsoever. The St. Regis Residences, Downtown Dubai are not owned, developed or sold by Marriott International, Inc., or their affiliates ("Marriott"). Emaar Properties PJSC ("Emaar") uses The St. Regis marks under a license from Marriott, which has not confirmed the accuracy of any of the statements or representations made herein.

# ST REGIS

DOWNTOWN • DUBAI

## THE RESIDENCES

TOWER 2

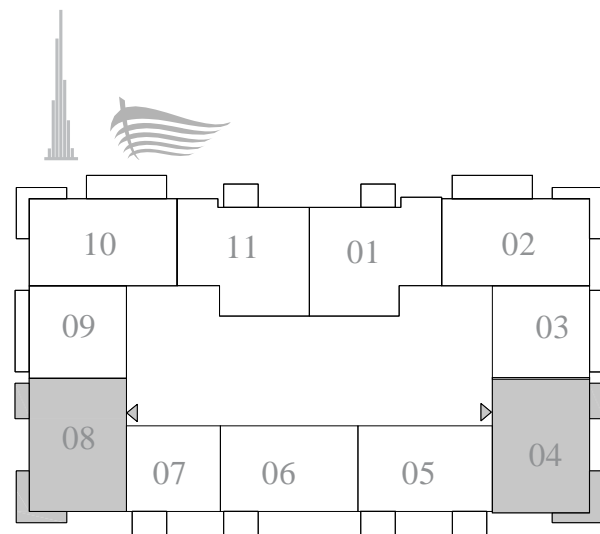
### 2 BEDROOM TYPE B

UNITS 04 & 08 | LEVEL 22-40

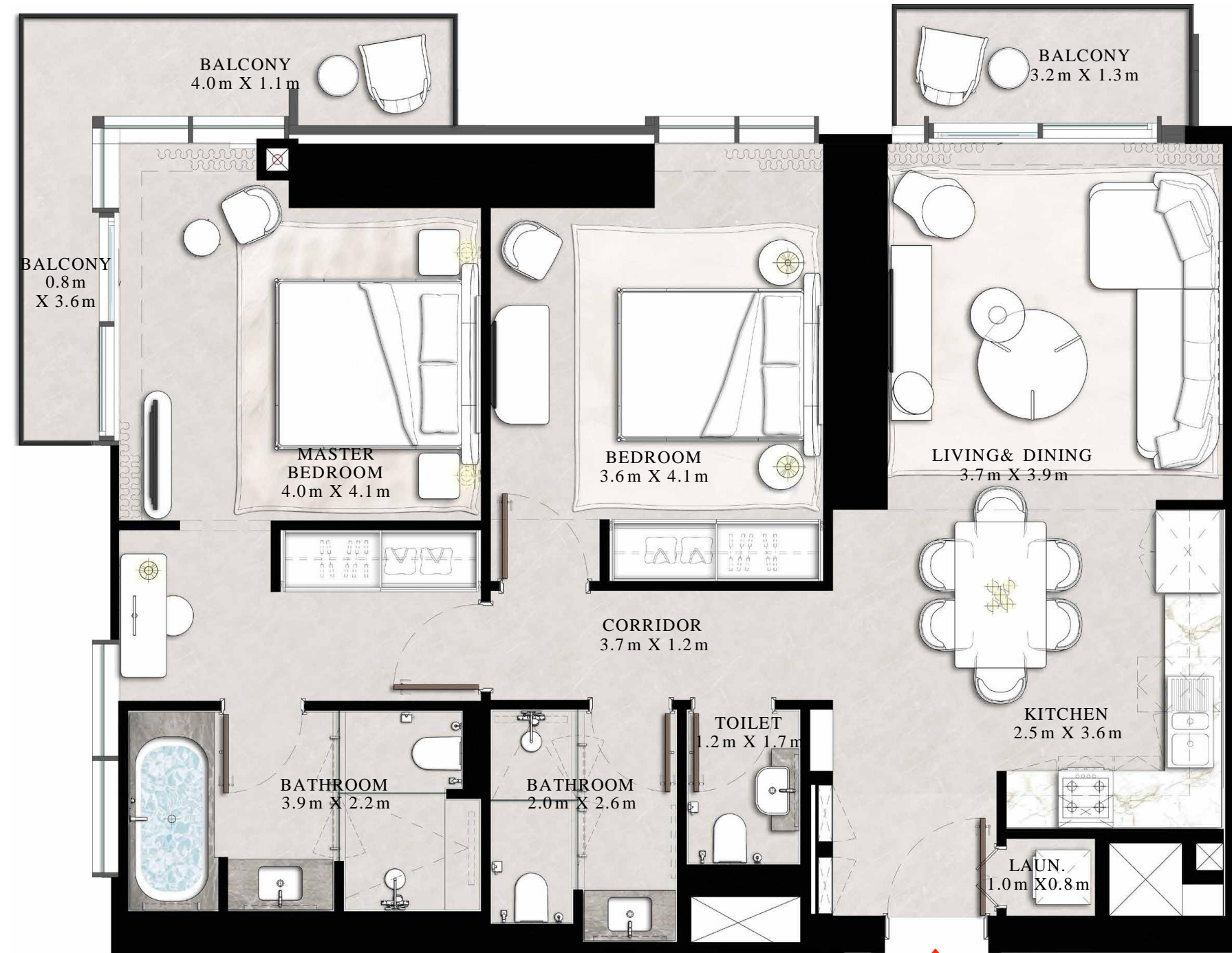
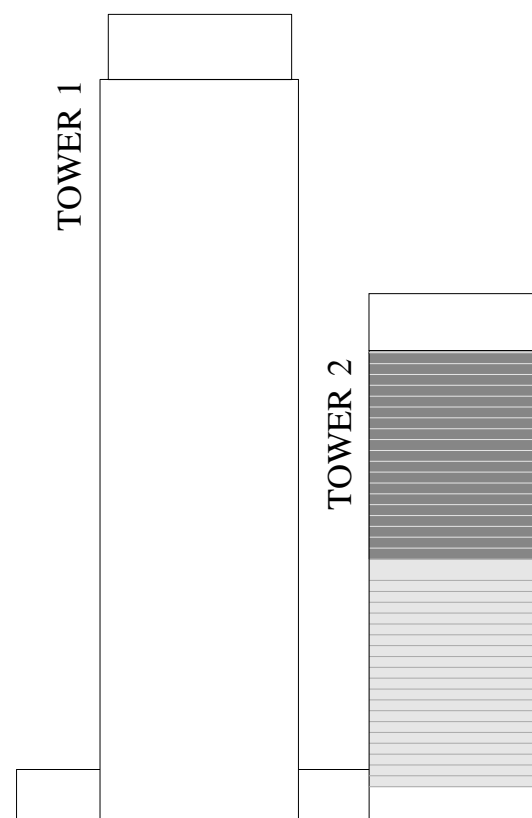
SUITE AREA	1134.41 SQ.FT.	105.39 SQ.M.
BALCONY AREA	154.35 SQ.FT.	14.34 SQ.M.
TOTAL AREA	1288.76 SQ.FT.	119.73 SQ.M.

KEY PLAN LEVEL

22-40



KEY SECTION



N ←

FLOOR PLAN 1. All dimensions are in imperial and metric, and measured from finish to finish excluding construction tolerances. 2. All materials, dimensions, and drawings are approximate only. 3. Information is subject to change without notice, at developer's absolute discretion. 4. Actual area may vary from the stated area. 5. Drawings not to scale. 6. All images used are for illustrative purposes only and do not represent the actual size, features, specifications, fittings, and furnishings. 7. The developer reserves the right to make revisions / alterations, at its absolute discretion, without any liability whatsoever. The St. Regis Residences, Downtown Dubai are not owned, developed or sold by Marriott International, Inc., or their affiliates ("Marriott"). Emaar Properties PJSC ("Emaar") uses The St. Regis marks under a license from Marriott, which has not confirmed the accuracy of any of the statements or representations made herein.

# ST REGIS

DOWNTOWN • DUBAI

## THE RESIDENCES

TOWER 2

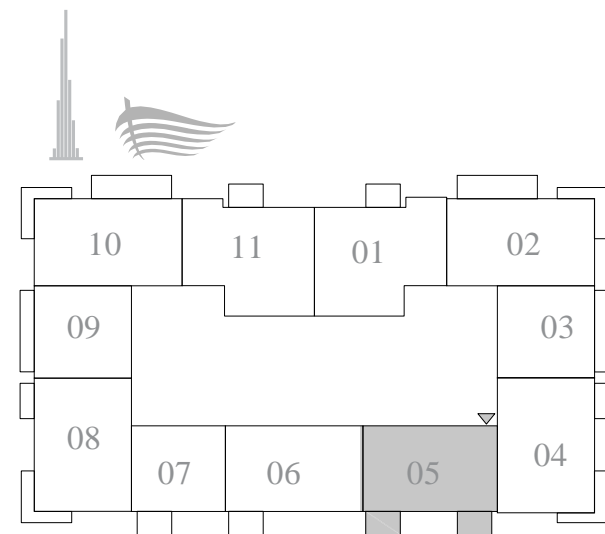
### 2 BED ROOM TYPE D

UNIT 05 | LEVEL 22

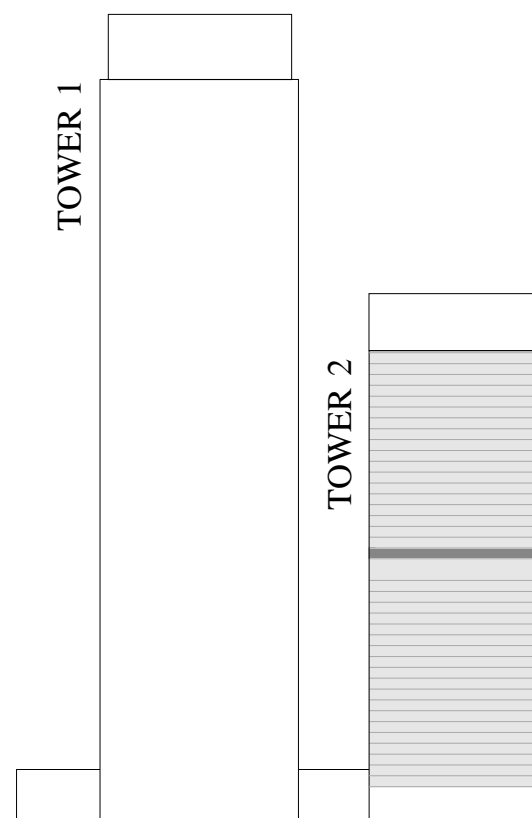
SUITE AREA	1079.84 SQ.FT.	100.32 SQ.M.
BALCONY AREA	142.41 SQ.FT.	13.23 SQ.M.
TOTAL AREA	1222.25 SQ.FT.	113.55 SQ.M.

KEY PLAN LEVEL

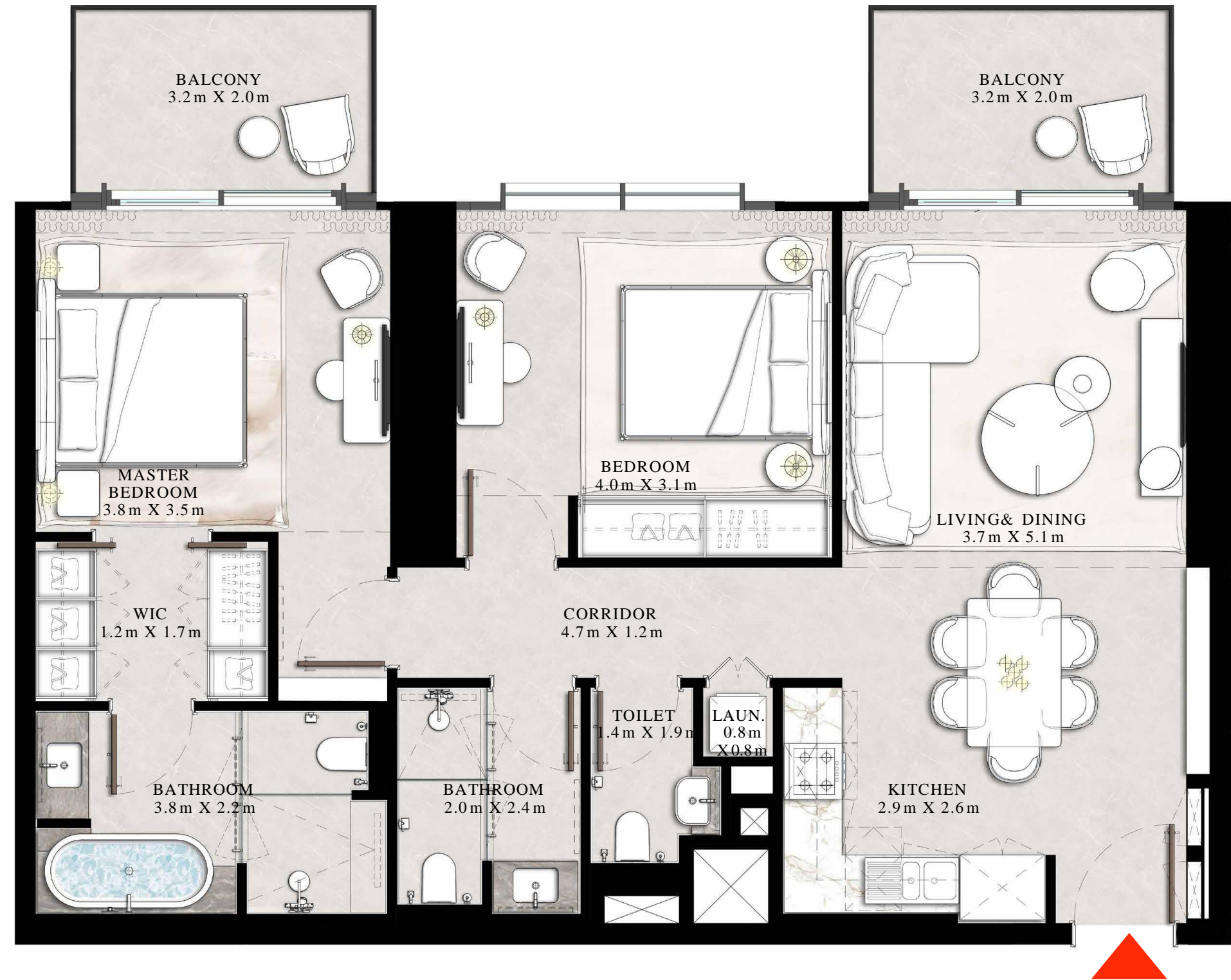
22



KEY SECTION



N ←



FLOOR PLAN 1. All dimensions are in imperial and metric, and measured from finish to finish excluding construction tolerances. 2. All materials, dimensions, and drawings are approximate only. 3. Information is subject to change without notice, at developer's absolute discretion. 4. Actual area may vary from the stated area. 5. Drawings not to scale. 6. All images used are for illustrative purposes only and do not represent the actual size, features, specifications, fittings, and furnishings. 7. The developer reserves the right to make revisions / alterations, at its absolute discretion, without any liability whatsoever. The St. Regis Residences, Downtown Dubai are not owned, developed or sold by Marriott International, Inc., or their affiliates ("Marriott"). Emaar Properties PJSC ("Emaar") uses The St. Regis marks under a license from Marriott, which has not confirmed the accuracy of any of the statements or representations made herein.

# ST REGIS

DOWNTOWN DUBAI  
THE RESIDENCES

TOWER 2

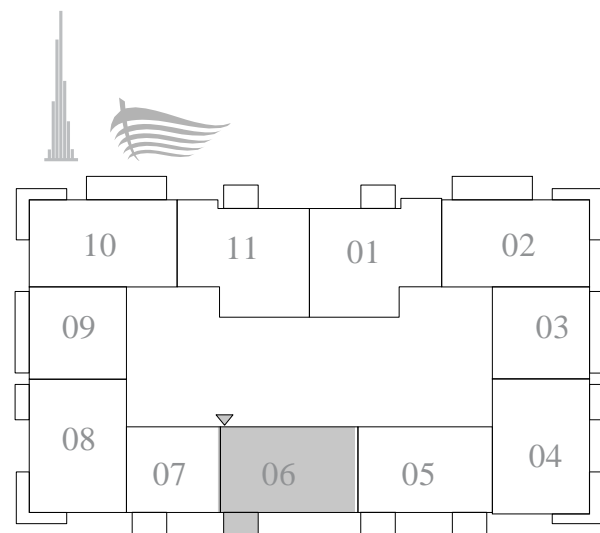
## 2 BED ROOM TYPE D1

UNIT 06 | LEVEL 22-40

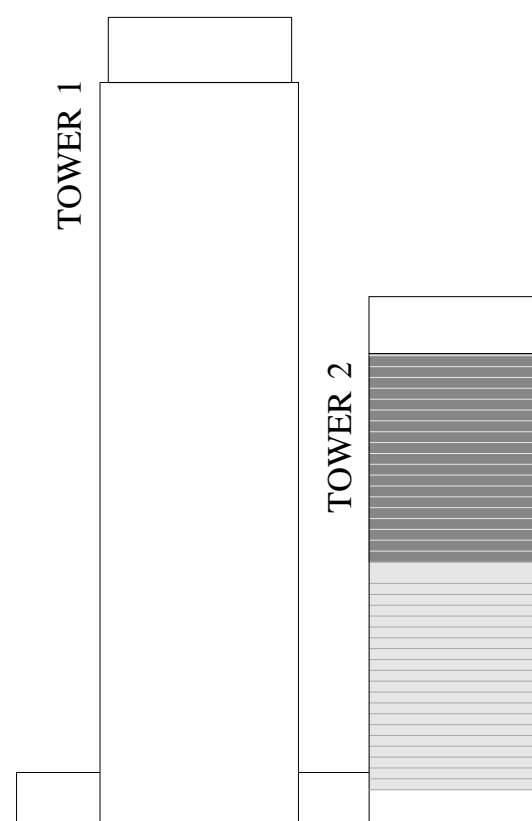
SUITE AREA	1089.63 SQ.FT.	101.23 SQ.M.
BALCONY AREA	71.15 SQ.FT.	6.61 SQ.M.
TOTAL AREA	1160.78 SQ.FT.	107.84 SQ.M.

KEY PLAN LEVEL

22-40



KEY SECTION



FLOOR PLAN 1. All dimensions are in imperial and metric, and measured from finish to finish excluding construction tolerances. 2. All materials, dimensions, and drawings are approximate only. 3. Information is subject to change without notice, at developer's absolute discretion. 4. Actual area may vary from the stated area. 5. Drawings not to scale. 6. All images used are for illustrative purposes only and do not represent the actual size, features, specifications, fittings, and furnishings. 7. The developer reserves the right to make revisions / alterations, at its absolute discretion, without any liability whatsoever. The St. Regis Residences, Downtown Dubai are not owned, developed or sold by Marriott International, Inc., or their affiliates ("Marriott"). Emaar Properties PJSC ("Emaar") uses The St. Regis marks under a license from Marriott, which has not confirmed the accuracy of any of the statements or representations made herein.

# ST REGIS

DOWNTOWN • DUBAI  
THE RESIDENCES

TOWER 2

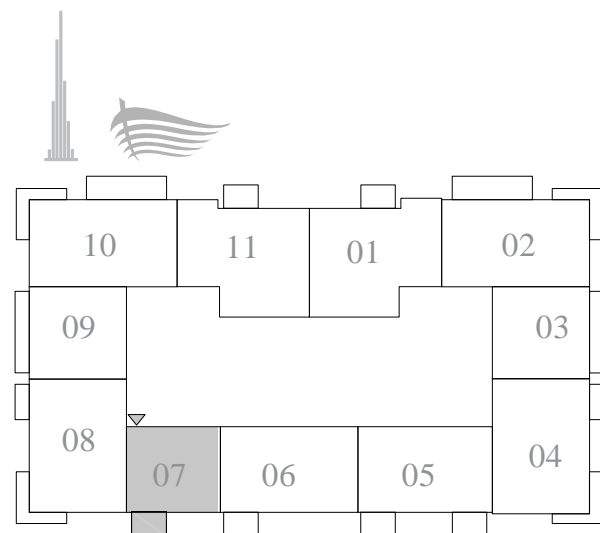
## 1 BEDROOM TYPE A

UNIT 07 | LEVEL 22-40

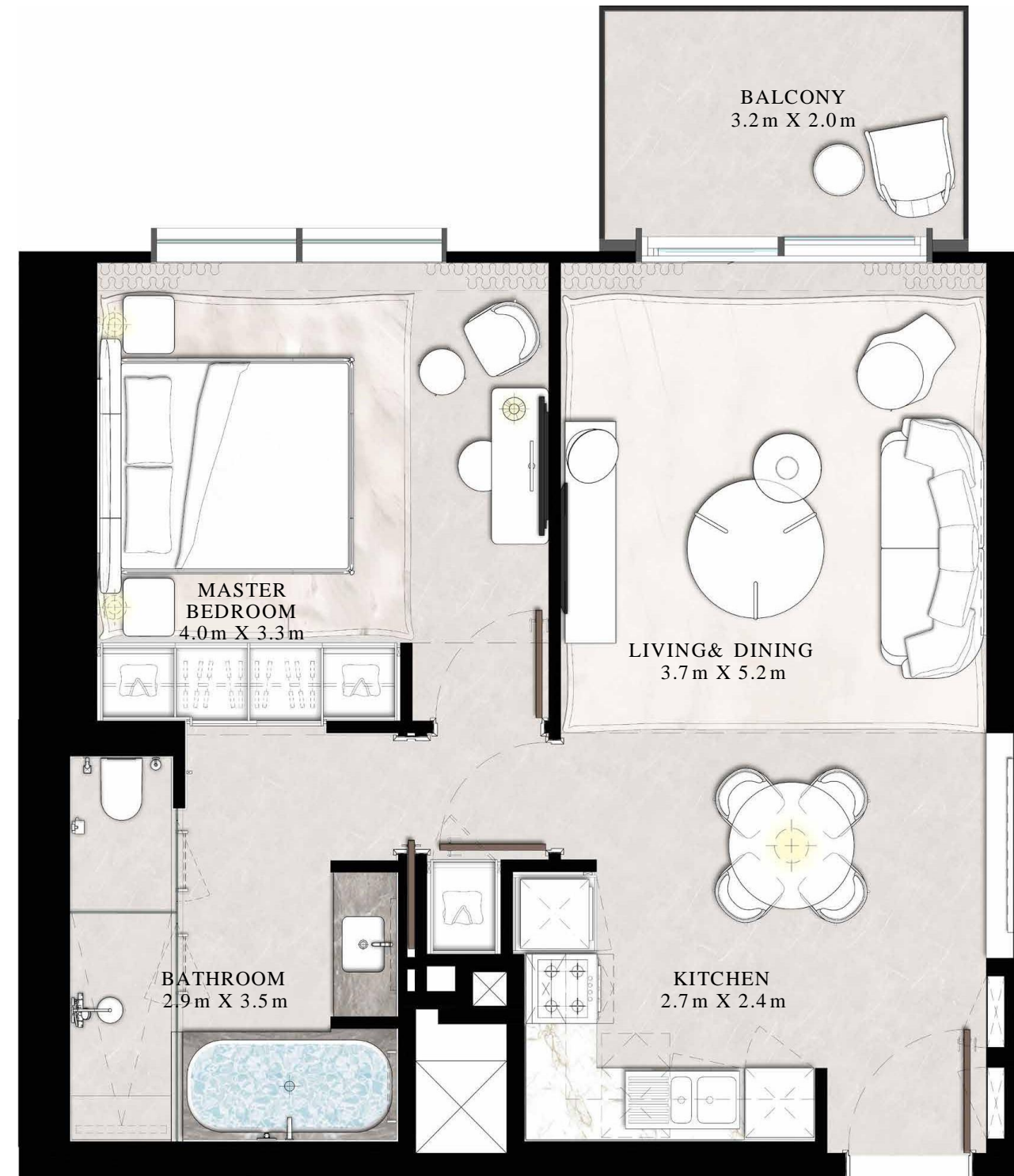
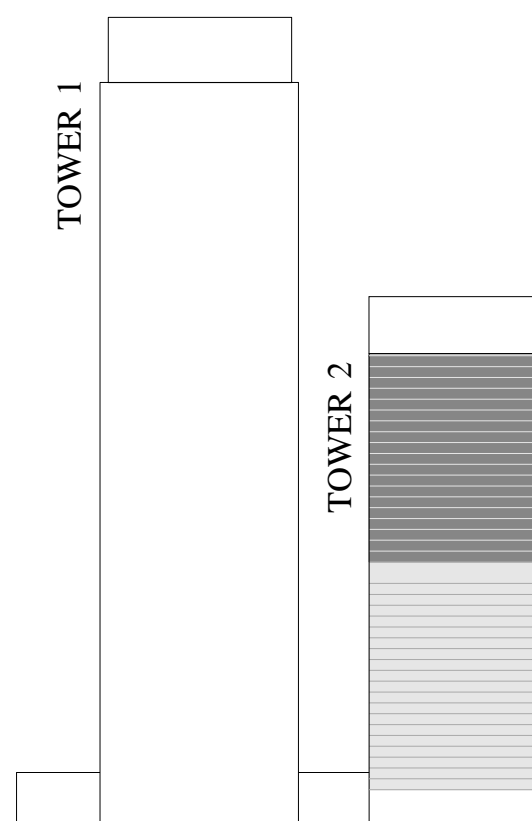
SUITE AREA	720.97 SQ.FT.	66.98 SQ.M.
BALCONY AREA	71.15 SQ.FT.	6.61 SQ.M.
TOTAL AREA	792.12 SQ.FT.	73.59 SQ.M.

KEY PLAN LEVEL

22-40



KEY SECTION



N ←

FLOOR PLAN 1. All dimensions are in imperial and metric, and measured from finish to finish excluding construction tolerances. 2. All materials, dimensions, and drawings are approximate only. 3. Information is subject to change without notice, at developer's absolute discretion. 4. Actual area may vary from the stated area. 5. Drawings not to scale. 6. All images used are for illustrative purposes only and do not represent the actual size, features, specifications, fittings, and furnishings. 7. The developer reserves the right to make revisions / alterations, at its absolute discretion, without any liability whatsoever. The St. Regis Residences, Downtown Dubai are not owned, developed or sold by Marriott International, Inc., or their affiliates ("Marriott"). Emaar Properties PJSC ("Emaar") uses The St. Regis marks under a license from Marriott, which has not confirmed the accuracy of any of the statements or representations made herein.

# ST REGIS

DOWNTOWN • DUBAI  
THE RESIDENCES

TOWER 2

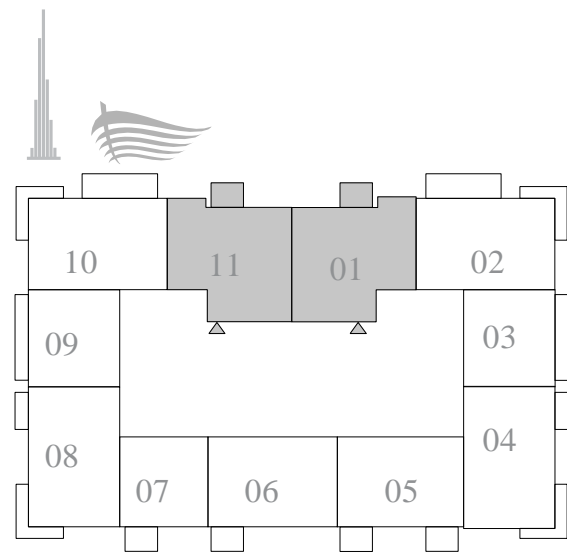
## 2 BEDROOM TYPE C

UNITS 01 & 11 | LEVEL 23-40

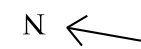
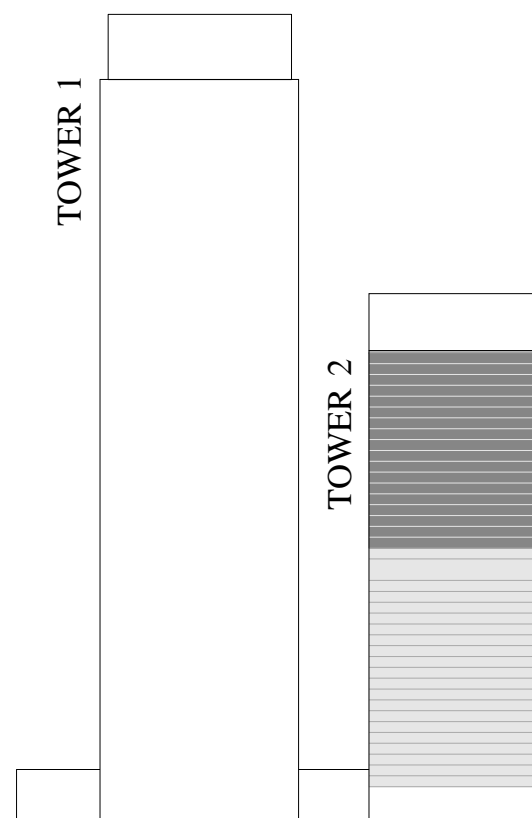
SUITE AREA	1216.32 SQ.FT.	113.00 SQ.M.
BALCONY AREA	71.15 SQ.FT.	6.61 SQ.M.
TOTAL AREA	1287.47 SQ.FT.	119.61 SQ.M.

KEY PLAN LEVEL

23-40



KEY SECTION



FLOOR PLAN 1. All dimensions are in imperial and metric, and measured from finish to finish excluding construction tolerances. 2. All materials, dimensions, and drawings are approximate only. 3. Information is subject to change without notice, at developer's absolute discretion. 4. Actual area may vary from the stated area. 5. Drawings not to scale. 6. All images used are for illustrative purposes only and do not represent the actual size, features, specifications, fittings, and furnishings. 7. The developer reserves the right to make revisions / alterations, at its absolute discretion, without any liability whatsoever. The St. Regis Residences, Downtown Dubai are not owned, developed or sold by Marriott International, Inc., or their affiliates ("Marriott"). Emaar Properties PJSC ("Emaar") uses The St. Regis marks under a license from Marriott, which has not confirmed the accuracy of any of the statements or representations made herein.

# ST REGIS

DOWNTOWN • DUBAI  
THE RESIDENCES

TOWER 2

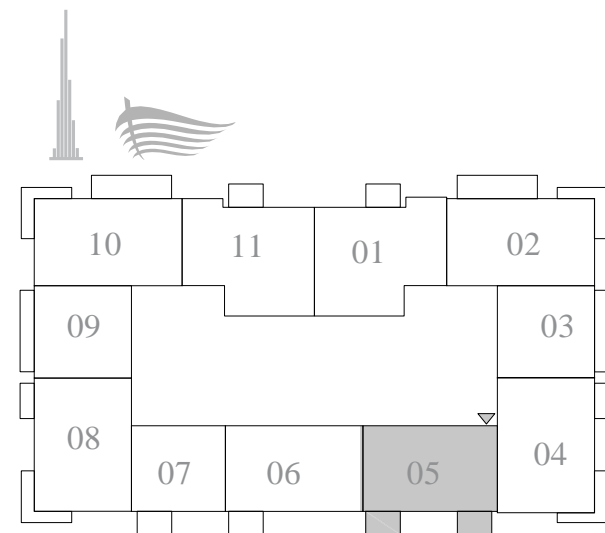
## 2 BEDROOM TYPE D

UNIT 05 | LEVEL 23-40

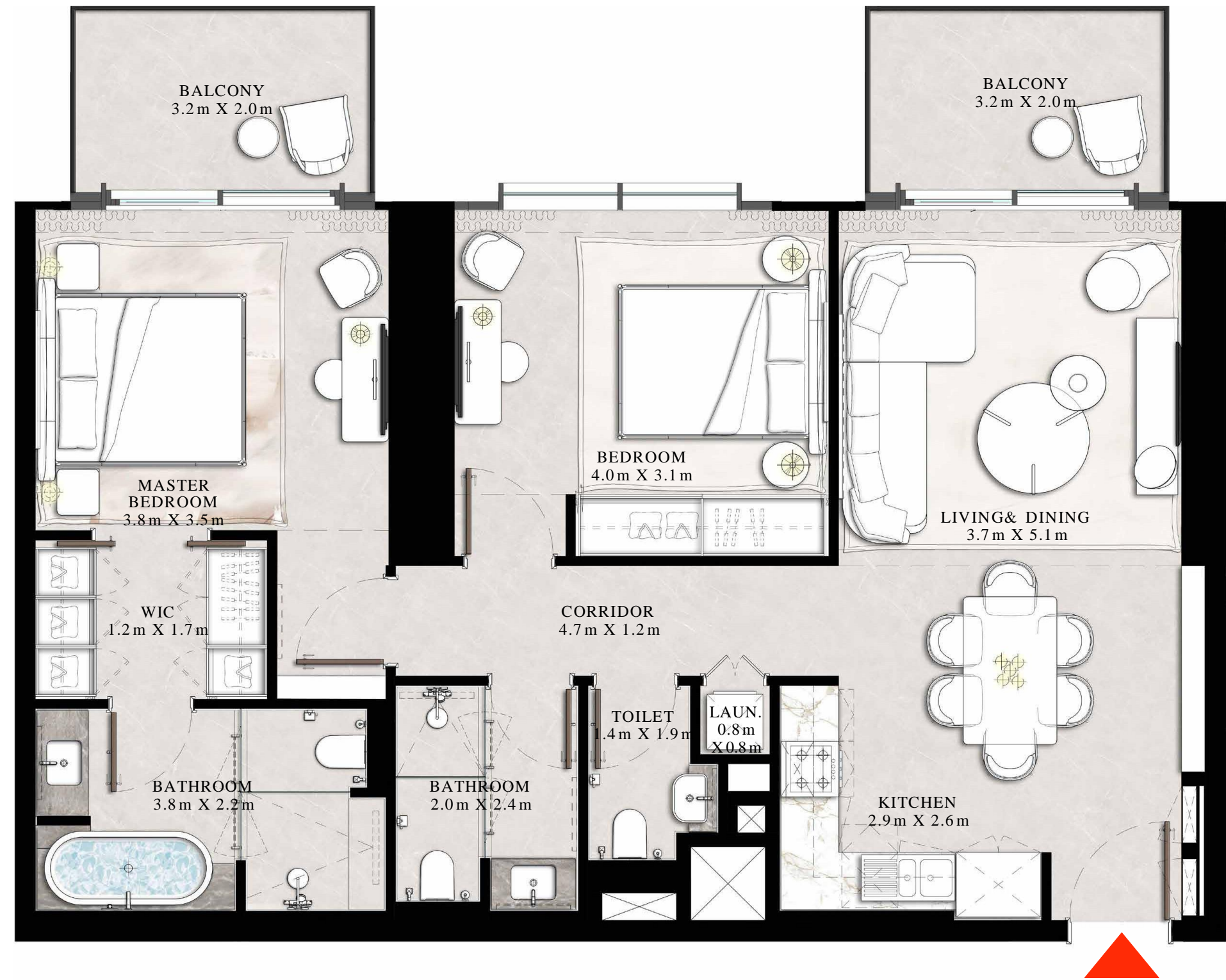
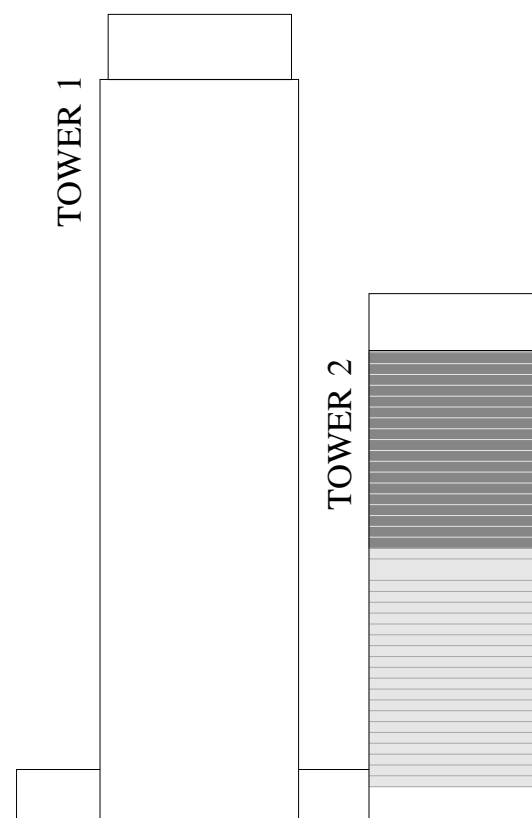
SUITE AREA	1079.51 SQ.FT.	100.29 SQ.M.
BALCONY AREA	142.41 SQ.FT.	13.23 SQ.M.
TOTAL AREA	1221.92 SQ.FT.	113.52 SQ.M.

KEY PLAN LEVEL

23-40



KEY SECTION



FLOOR PLAN 1. All dimensions are in imperial and metric, and measured from finish to finish excluding construction tolerances. 2. All materials, dimensions, and drawings are approximate only. 3. Information is subject to change without notice, at developer's absolute discretion. 4. Actual area may vary from the stated area. 5. Drawings not to scale. 6. All images used are for illustrative purposes only and do not represent the actual size, features, specifications, fittings, and furnishings. 7. The developer reserves the right to make revisions / alterations, at its absolute discretion, without any liability whatsoever. The St. Regis Residences, Downtown Dubai are not owned, developed or sold by Marriott International, Inc., or their affiliates ("Marriott"). Emaar Properties PJSC ("Emaar") uses The St. Regis marks under a license from Marriott, which has not confirmed the accuracy of any of the statements or representations made herein.

# MAISON D' AHMED REAL ESTATE

St. Regis The Residences by EMAAR

**Register Your Interest**



EMAAR